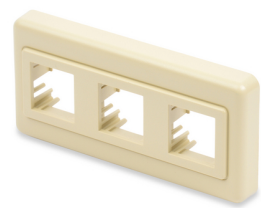


Part Number: MDVO MOD FURNITURE ADAPTERS

MDVO Modular Furniture Adapters



Product Description

MDVO Modular Furniture Adapters are available in 3 or 4 Ports with many color options.

Technical Specifications

Product Overview

Environmental Space:	Indoor
Suitable Applications:	Compatible with a variety of modules that are suitable for use with Belden IBDN Systems 10GX, 4800,3600, 2400 and 1200

Physical Characteristics (Overall)

Height:	3.3 m
Width:	1.57
Depth:	0.5
Front Connection:	Flush
Packaging:	Individually packaged in a plastic bag.
Weight:	0.11 kg

Connectors

Materials

Material
Plastic - UL94V-0

Temperature Range

Installation Temp Range:	-10 to 60°C
Storage Temp Range:	-40 to 70°C
Operating Temp Range:	-10 to 60°C

Mechanical Characteristics

Footprint/Type:	MDVO
Connector/Hardware Retention:	20 lbs

Applicable Environmental and Other Programs

EU Directive 2002/95/EC (RoHS):	Yes
EU RoHS Compliance Date (yyyy-mm-dd):	2006-01-07
MII Order #39 (China RoHS):	EUP 50

Flammability, LS0H, Toxicity Testing

Safety Listing:	ACA, Bi-national Standard Listed
-----------------	----------------------------------

Part Number

Related Parts:	Compatible with 10GX, CAT6+ and CAT5E MDVO-style Modular Jacks and MDVO Multimedia Modules
----------------	--------------------------------------------------------------------------------------------

Variants

Item #	Color	Port Count
--------	-------	------------

A0407072	Almond	3 Port
AX100926	Almond	4 Port
A0407074	Black	3 Port
A0407071	Gray	3 Port
AX100925	Gray	4 Port
AX102594	Ivory	4 Port
AX102648	Ivory	3 Port
A0407073	White	3 Port
AX100927	White	4 Port

Product Notes

Included Parts:	installation sheet, blank
Notes:	For proper installation refer to Installation Guide P0746008 included with the product or visit our web site at http://www.belden.com

© 2019 Belden, Inc

All Rights Reserved.

Although Belden makes every reasonable effort to ensure their accuracy at the time of this publication, information and specifications described here in are subject to error or omission and to change without notice, and the listing of such information and specifications does not ensure product availability.

Belden provides the information and specifications herein on an "ASIS" basis, with no representations or warranties, whether express, statutory or implied. In no event will Belden be liable for any damages (including consequential, indirect, incidental, special, punitive, or exemplary damages) whatsoever, even if Belden has been advised of the possibility of such damages, whether in an action under contract, negligence or any other theory, arising out of or in connection with the use, or inability to use, the information or specifications described herein.

All sales of Belden products are subject to Belden's standard terms and conditions of sale.

Belden believes this product to be in compliance with all applicable environmental programs as listed in the data sheet. The information provided is correct to the best of Belden's knowledge, information and belief at the date of its publication. This information is designed only as a general guide for the safe handling, storage, and any other operation of the product itself or the one that it becomes a part of. The Product Disclosure is not to be considered a warranty or quality specification. Regulatory information is for guidance purposes only. Product users are responsible for determining the applicability of legislation and regulations based on their individual usage of the product.