

Hinged Wall Mount for Select Liberty Cameras*

*Requires Appropriate Pendant Cap

L3HWM1

SUPPORTED MODELS:

Pendent Caps: L3PC2, L2PC3, L2PC4, L2PC5, L2PC6

FEATURES:

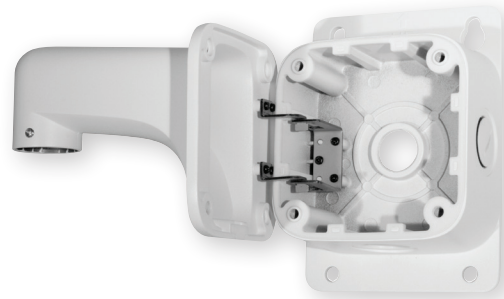
- Manages & Protects Cables
- Hinged Wall Arm for Easy Installation
- Side, Back & Bottom 3/4" Conduit Access
- For Indoor & Outdoor Use

SPECIFICATIONS:

	L3HWM1
Material	Aluminum Alloy
Color	White
Product Dimensions	201.8 × 120.2 × 167.4mm / 7.94 (D) × 4.73 (W) × 6.59" (H)
Product Weight	0.85kg / 1.87 Lb.
Max Bearing Weight	3 kg / 6.61 Lb.



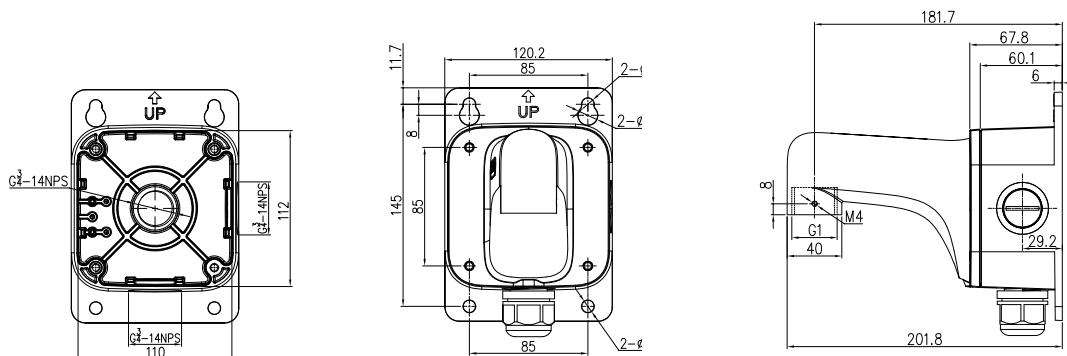
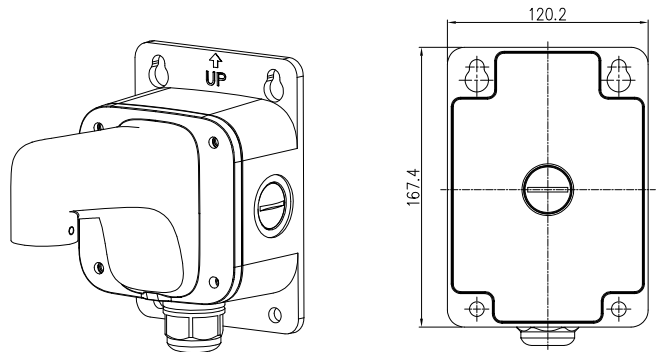
L3HWM1



INCLUDED ACCESSORIES:

Item	Qty
Hinged Wall Mount w/ Junction Box	1
3/4" Conduit Caps	2
Plastic Conduit Cable Connector	1
Rubber Grommet	1
Mounting Template	1
Stainless Steel Set Screw	1
Expansion Screws M6×60mm	4
Allen Wrench for Set Screw	1
Allen Wrench for Bracket	1

DIMENSIONS:





TECHNICAL SPECIFICATIONS

Hinged Wall Mount for Select Liberty Cameras*

*Requires Appropriate Pendant Cap

L3HWM1

ABOUT THIS BRACKET – Read Before Use

1. Before installation, please check the bracket packing and accessories are intact. If the bracket is damaged or missing accessories please contact us at 855-388-7422.
2. Do not exceed the MAX load listed on the bracket label.
3. Check the installation area and make sure it will support the total weight of the installed product and bracket.
4. Bracket ships with installation screws, check the material the bracket will be installed onto and use appropriate screws based on the material (may not be supplied with bracket).
5. If the bracket is installed near the ocean or areas exposed to heavy chemicals corrosion may occur which can affect the strength of the bracket. Check the bracket regularly for corrosion.

