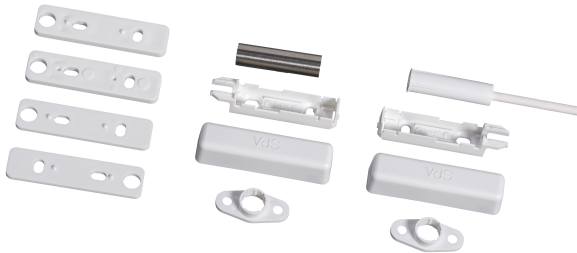


ISC-PMC-SF2S Magnetic contact EN-G2, flush+surface

www.boschsecurity.com



BOSCH
Invented for life



- ▶ Flush / surface mount magnetic contact
- ▶ Parallel or in front-end-position mounting
- ▶ Mountable on ferromagnetic materials
- ▶ EN50131-2-6 Grade 2

Conventional magnetic contacts are used for opening surveillance of windows and doors.

Functions

The magnetic contact monitors the opening of windows and doors in security applications.

Certifications and approvals

Region	Regulatory compliance/quality marks	
Finland	FK	RL 13 089 [ISC-PMC-SF2S]
Germany	VdS	G 191568 [ISC-PMC-SF2S]
Europe	CE	ISC-PMC-SF2S, ISC-PMC-F3S, ISC-PMC-S3S, ISC-PRS-S2S, ISC-PRS-S3S
Russia	GOST	EAC

Installation/configuration notes

- Magnetic contact and magnet are mounted parallel or in a front-end-position in window frames, window casements, doors and door frames.
- The magnet can be mounted in the supplied plastic tube.
- The magnet can also be mounted without the plastic tube by inserting it into pre-drilled holes.

- If the magnetic contact is mounted in ferromagnetic materials, the optional flush mount flanges have to be used.
- If the contact is mounted on ferromagnetic material, the spacing pieces have to be used.

Parts included

Quantity	Component
1	Magnetic contact

Technical specifications

Electrical

Maximum load in W	5
Minimum switching current in mA	0.01
Maximum switching current in mA	100
Maximum switching voltage in VDC	110

Mechanical

Installation type	Surface or recess mount, parallel
Reed contacts	Shutter changer

Material (magnet)	AlNiCo 500
Dimension in cm (Ø x D) (switch)	0.8 x 3
Dimension in cm (Ø x D) (magnet)	0.8 x 3
Maximum axial installation distance in cm	1.5
Material (cable)	ABS
Color	White
Cable type	LiYY-ZGL 4 x 0.14 mm ² , suitable for LSA-PLUS insulation displacement technology
Cable length in m	1
Switch cycles	10 ⁷

Environmental

Minimum operating temperature in °C	-25
Maximum operating temperature in °C	70
Protection class	67
Environmental class (VdS)	III
Environmental class (EN)	IIIa

Ordering information

ISC-PMC-SF2S Magnetic contact EN-G2, flush+surface
 Surface and flush mountable magnetic contact.
 Order number **ISC-PMC-SF2S**

Represented by:

Europe, Middle East, Africa:
 Bosch Security Systems B.V.
 P.O. Box 80002
 5600 JB Eindhoven, The Netherlands
 Phone: + 31 40 2577 284
 emea.securitysystems@bosch.com
 emea.boschsecurity.com

Germany:
 Bosch Sicherheitssysteme GmbH
 Robert-Bosch-Ring 5
 85630 Grasbrunn
 Germany
 www.boschsecurity.com

North America:
 Bosch Security Systems, Inc.
 130 Perinton Parkway
 Fairport, New York, 14450, USA
 Phone: +1 800 289 0096
 Fax: +1 585 223 9180
 onlinehelp@us.bosch.com
 www.boschsecurity.us

Asia-Pacific:
 Robert Bosch (SEA) Pte Ltd, Security Systems
 11 Bishan Street 21
 Singapore 573943
 Phone: +65 6571 2808
 Fax: +65 6571 2699
 apr.securitysystems@bosch.com
 www.boschsecurity.asia