

TECHNICAL SPECIFICATIONS

Description:

The wall angle support bracket provides perpendicular wall support for cable ladder runway

Features:

- Constructed of high strength steel
- Components are RoHS compliant
- Conforms to EIA-310 Standard
- Each support consists of a wall angle, J-bolt, and 5/16" hardware
- Available in black
- Stock widths of 12" and 18" (6", 9", 15" and 24" available through special order)

6"

LLRWAB6

12"

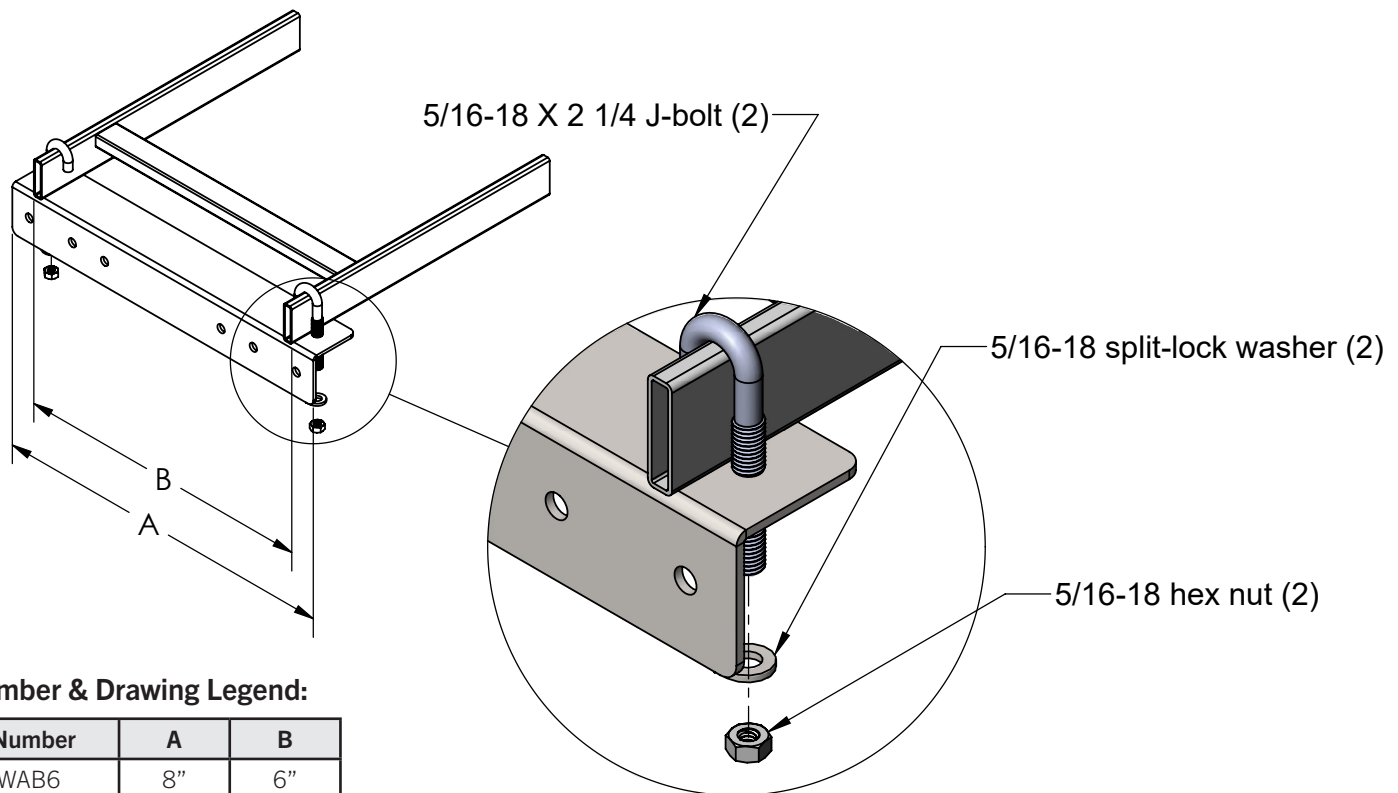
LLRWAB12

18"

LLRWAB18

24"

LLRWAB24



Part Number & Drawing Legend:

Part Number	A	B
LLRWAB6	8"	6"
LLRWAB12	14"	12"
LLRWAB18	20"	18"
LLRWAB24	26"	24"