

T1RM3F4V

Rack Access and Power Integration Solution for Mercury



Altronix T1RM3F4V kit consists of Trove1R enclosure and TM1R Altronix & Mercury backplane with 12VDC or 24VDC (factory set at 24VDC) @ 6A power supply/charger, 12VDC voltage regulator, eight (8) output fused dual output power distribution module and four (4) fuse protected output access control module. This kit also accommodates various combinations of Mercury* boards for up to four (4) doors in a single enclosure. Trove simplifies board layout and wire management, reduces installation time and labor costs.



T1RM3F4V



*Also compatible with these authentic Mercury partners:
 AccessNsite, Avigilon, BadgePass, BluBox, Feenics, Genetec, Identocard, IMRON, Johnson Controls, Kastle, Keri Systems, Lenel/S2, LockState, Maxxess, Midpoint Security, NLSS, Open Options, Panasonic Video Insight, Quintron, RS2, Schneider Electric, Vanderbilt

Key Features

- Output Power:
 - Four (4) 24VDC fused lock power outputs rated at 6A total max.
 - Fire Alarm Disconnect is individually selectable by output.
 - Eight (8) individually selectable 12VDC or 24VDC fused power outputs rated at 6A total max. for readers, REXs, controllers, etc.
- Accommodates the following Mercury controllers:
 LP1502, MR52, MR16IN, MR16OUT, LP2500, MUX8, MR621e, LP1501, MR50.
- Power status LED on front panel.
- Simplified board layout and wire management.
- Convenient knockout configuration:
 - Six (6) 1.25" diameter knockouts located on the back of enclosure.
- 6' IEC320 3-wire power cord.
- 2U drawer on extendable rails.
- Black powder coated steel enclosure.
- Included Z Bracket facilitates ease of wiring.
- Includes cam lock, tamper switch and mounting hardware.
- CE European Conformity.
- Lifetime Warranty*

*AltronixPowerSupply/ChargerandSub-Assembliesonly

Accessories (order separately)



RE2

RE2 - Rack Mount Battery Enclosure

Altronix RE2 accommodates up to four (4) 12VDC/7AH batteries.



WM5

WM5, WM25, WM100 - Magnetic Cable Tie Mounts

Altronix WM5, WM25, and WM100 are packs of 5, 25 or 100 magnetic cable tie mounts respectively. They accommodate standard zip ties or velcro straps. These are ideal for wire management in our Trove series.

Specifications

Power Supply/Charger (eFlow6NBV):

Input

Voltage 220VAC (working range 198VAC - 256VAC),
50/60Hz, 2.5A.

Input Fuse 5A / 250V.

Outputs

Voltage Factory set at 24VDC.

Current 6A continuous.

Maximum Supply Current for Main and Aux. Outputs on eFlow6NBV Power Supply board, PDS8 Power Distribution Module's and ACM4 Access Power Controller's outputs is 5.6A.

Auxiliary Class 2 power-limited @ 1A (unswitched).

Other Overvoltage protection.
Filtered and regulated.

Battery Backup

Type Sealed lead acid or gel type.

Fuse Rating 10A @ 32VDC.

Failover Upon AC loss, instantaneous.

Fire Alarm Disconnect

Supervised Latching or non-latching.

EOL 10K Resistor.

Supervision

AC Failure Form "C" contacts.

Battery Form "C" contacts.

Low DC Power Shutdown

Shuts down DC output terminals if battery voltage drops below 70-75% for 24V units. Prevents deep battery discharge.

Indicators (LED)

Input 220VAC is present.

DC Output Powered.

Battery Discharged or not connected.

Power Distribution Module (PDS8):

Input

Voltage 24VDC from eFlow6NBV and 12VDC from VR6.

Input Fuse 10A / 250V.

Outputs

Voltage 12 or 24VDC individually selectable.

Output Fuses 3A / 32VDC.

Indicators (LED)

DC Output Eight (8) individual output LEDs.

Green: 12VDC

Red: 24VDC.

Voltage Regulator (VR6):

Input

Voltage 24VDC from eFlow6NBV.

Outputs

Voltage 12 or 24VDC individually selectable.

Output Fuses 3A / 32VDC.

Indicators (LED)

DC Output Eight (8) individual output LEDs.

Green: 12VDC

Red: 24VDC.

Access Power Controller (ACM4):

Input

Voltage 24VDC from eFlow6NBV.

Main Fuse 10A / 250V.

Outputs

Voltage 24VDC.

Four (4) independently controlled 2.5A outputs:

- Four (4) Fail-Safe and/or Fail-Secure power outputs.
- Four (4) dry form "C" 5A rated relay outputs.
- Any combination of the above.

Four (4) auxiliary power outputs (unswitched).

Output Fuses 3A / 32VDC.

Indicators (LED)

Red LEDs Outputs are triggered (relays energized).

Green LED FACP disconnect is triggered.

T1RM3F4V Kit:

Agency Listings

CE European Conformity.

Physical and Environmental:

Dimensions (H x W x D):

Modular 2U standard EIA 19" rack mount chassis.
3.25" x 19.0" x 26.5" (82.6mm x 482.6mm x 673.1mm).

Weights:

Product 20 lbs. (9.07 kg).

Shipping 25 lbs. (11.34 kg).

Temperature

Operating 0°C to 49°C (32°F to 120°F).

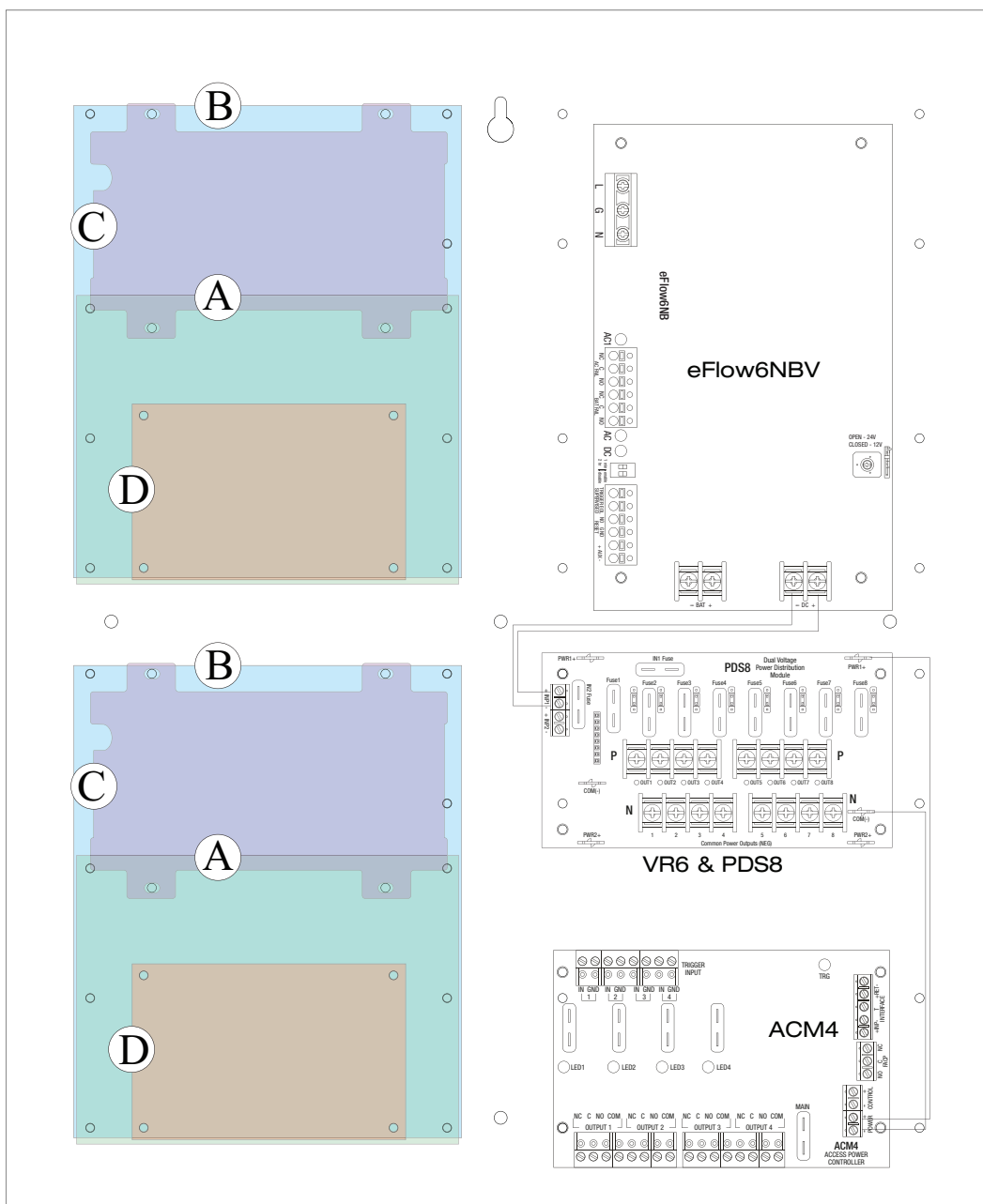
Storage -20°C to 70°C (-4°F to 158°F).

Relative Humidity 85% +/-5%.

BTU/Hr.: 115 BTU/Hr.

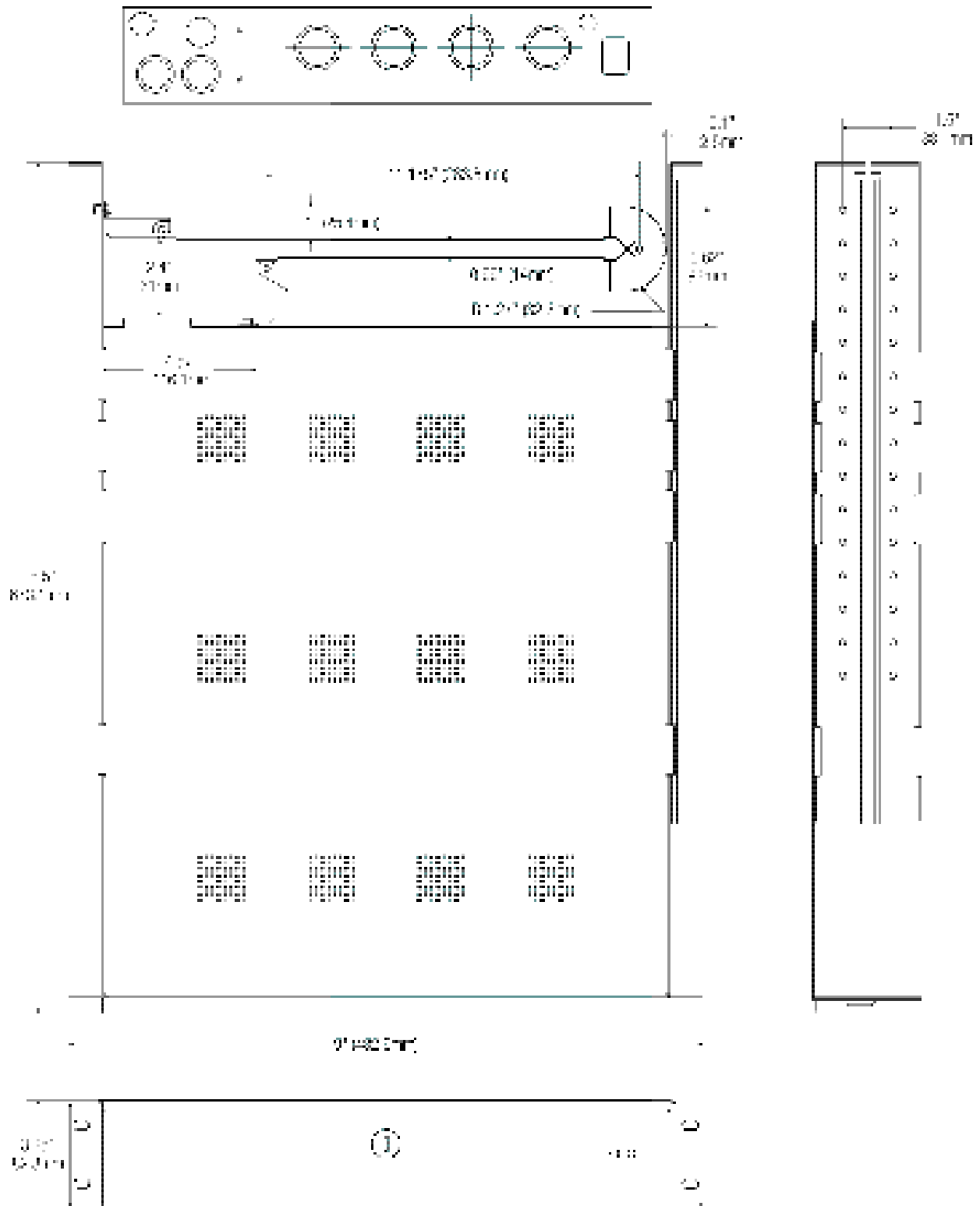
Access Controller Position Chart for the Following Models:

Altronix/Mercury	Pem Mounting
LP2500, MUX8	(A)
LP1502, LP4502, MR52, MR16IN, MR16OUT	(B)
LP1501, MR62e	(C)
MR50	(D)



T1RM3F4V

Rack Access and Power Integration Solution for Mercury



Made in the U.S.A.