

WRR-Q-A201W Series

Wisenet WAVE Network Video Recorder



The WRR-Q-A201W offers an affordable and reliable 2U rackmount solution for any entry-level deployment. Up to 96TB of raw video-optimized storage is provided by 24/7 duty cycle SATA drives.

The latest AMD® EPYC® Processor allows for high powered computing power, and 16GB of DDR4 RAM provides the system resources to scale as needed.

Dual solid state drives for applications and the operating system enables fast boot and load times. Supports RAID 0, 1, 5, 6 storage configurations allowing for increased reliability. The three-year, on-site, Next Business Day, Keep Your Hard Drive warranty ensures peace of mind.

Each server is pre-configured with Wisenet WAVE VMS and preloaded with 4 Professional licenses to ensure quick and easy deployment with minimum setup time.

Key Features

- Preloaded and configured with Wisenet WAVE video management system
- Up to 96TB of Raw Storage
- 470 Mbps of recording throughput
- SSD & 24/7 Duty Cycle SATA Drives
- Includes USB and keyboard
- Includes Sliding Rack Rail with Cable Management Arm
- 3-Year, On-site, Next Business Day, Keep Your Hard Drive Warranty
- Supports Wisenet and ONVIF conformant IP cameras
- IPMI Management
- Dedicated GPU for client application for easy configuration



BUILT FOR SECURITY / VIDEO SURVEILLANCE

WRR-Q-A201W

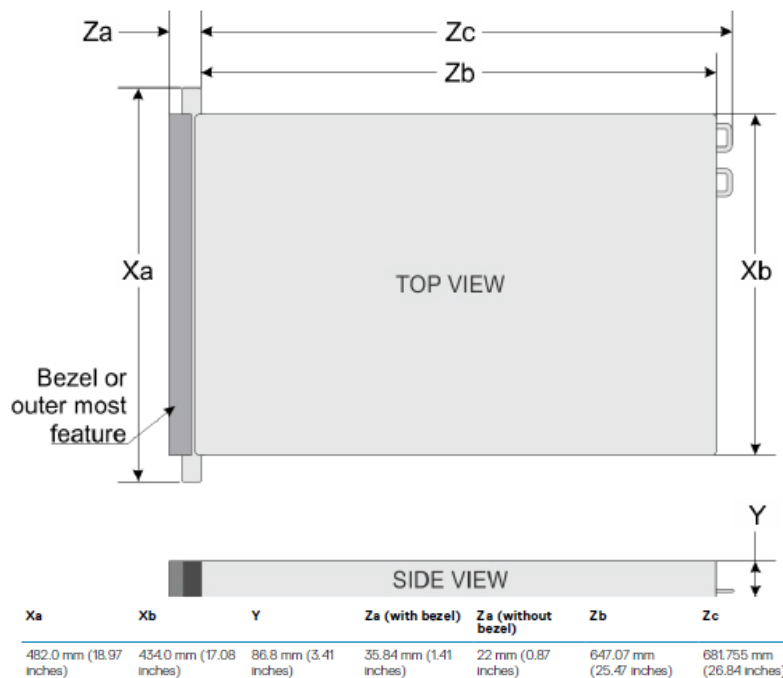
| SYSTEM | |
|---------------------------|---|
| Video Management Software | Wisenet WAVE |
| Recording Bandwidth | Up to 470 Mbps |
| OS Drive Bays | 2 x 480GB SSDs |
| OS / Data Drive Bays | 10 x 3.5" Hot Swappable Bays for Storage |
| Data Storage | Up to 96TB raw storage, Supports RAID 0, 1, 5, 6 (RAID5 Pre-configured) |
| Pre-loaded Licenses | 4 x Wisenet WAVE Professional license |
| Network Interface | 2 x RJ45 Gigabit Ethernet |
| Processor | 1 x AMD® EPYC® Processor |
| Memory | 16GB, 2 x 8GB DDR4 |
| Operating System | Windows 10 IoT Enterprise |
| Video Outputs | NVIDIA Quadro P400 3x MiniDisplay Port, 1 x VGA (Front), 1 x VGA (Rear) |
| USB Ports | 2 x USB 3.0 (Rear), 2 x USB 2.0 (Front), 1 x USB 3.0 (Internal) |
| Other Ports | Serial |
| Keyboard & Mouse | Included |
| Sliding Rail Kit | Included, with Cable Management Arm |

| MECHANICAL / ELECTRICAL / ENVIRONMENTAL | | |
|---|------------------------------------|---|
| Mechanical | Form Factor | 2U rack mount chassis |
| | Color / Material | Black / Metal |
| | Dimensions (WxDxH) | 19" (482mm) x 28.25" (703mm) x 3.41" (86.8mm) |
| | Weight | 73 lb/33.1 Kg |
| Electrical | Power Supply | 2 x 750W 80 Plus Platinum |
| | Power Input | 100 ~ 240V AC |
| | Power Consumption | Maximum 788W |
| Environmental | Operating Temperature | Standard: 50°F ~ 95°F (10°C ~ 35°C) at 10% to 80% RH with 84.2°F maximum dew point. Refer to manual for operating temperature derating. Extended: 40°F ~ 104°F (5°C ~ 40°C) at 5% to 85% RH with 84.2°F dew point. |
| | Storage Temperature | -40°F ~ 149°F (-40°C ~ 65°C) |
| | Operating Humidity | 10% to 80% RH with 84.2°F maximum dew point. |
| Certification | UL, cUL, CB, FCC, 80 Plus Platinum | |

* Weight is on chassis without HDDs
 * The latest product information / specification can be found at www.hanwhasecurity.com
 * Bandwidth performance figures based on performance testing by Hanwha Techwin using Wisenet WAVE

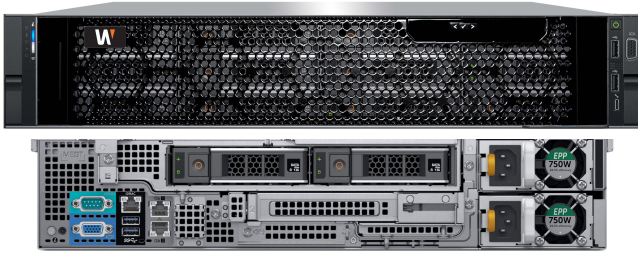
Dimensions

Unit: inch (mm)



WRR-Q-A201W Series

Wisenet WAVE Network Video Recorder



EFFECTIVE STORAGE CAPACITY*

| MODEL | RAW STORAGE | RAID5 EFFECTIVE STORAGE |
|------------------|-------------|-------------------------|
| WRR-Q-A201W-12TB | 12TB | 7TB |
| WRR-Q-A201W-16TB | 16TB | 11TB |
| WRR-Q-A201W-20TB | 20TB | 14TB |
| WRR-Q-A201W-24TB | 24TB | 18TB |
| WRR-Q-A201W-32TB | 32TB | 22TB |
| WRR-Q-A201W-40TB | 40TB | 29TB |
| WRR-Q-A201W-48TB | 48TB | 37TB |
| WRR-Q-A201W-56TB | 56TB | 44TB |
| WRR-Q-A201W-64TB | 64TB | 52TB |
| WRR-Q-A201W-72TB | 72TB | 59TB |
| WRR-Q-A201W-80TB | 80TB | 67TB |
| WRR-Q-A201W-96TB | 96TB | 78TB |

* Actual usable space is dependent on file system format and allocation size