

Rittal – The System.

Faster – better – everywhere.

PDU metered plus – DK 7979.510

Date : Dec 17, 2020

ENCLOSURES

POWER DISTRIBUTION

CLIMATE CONTROL

IT INFRASTRUCTURE

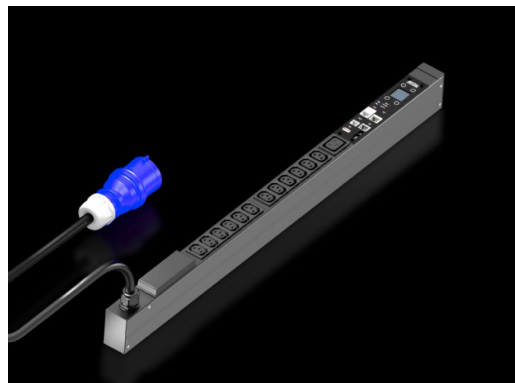
SOFTWARE & SERVICES

FRIEDHELM LOH GROUP



PDU metered plus – DK 7979.510

created: 17.12.2020 on www.rittal.com/com-en



Product description

Description:	High-end power distribution in a compact design for IT network and server racks. With power measurement per individual outgoing slot.
Benefits:	<ul style="list-style-type: none">For vertical mounting, it may be attached in the zero-U space of the Rittal VX IT or TS IT rack with no need for toolsColour coding of phases and fuse circuits (L1=pink, L2=black, L3=white)Tool-free divider kit for VX ITPDU self-supplied, no external power supply requiredMeasurement accuracy $\pm 1\%$ (kWh) to IEC 50430-1Integral real-time clock with battery buffering (max. 10 years, battery replaceable)Integral electromagnetic buzzer for acoustic alarmsAdjustable limit values (warning/alarm) for current, voltage, output, individual settings for each output slotPower-saving design, minimal intrinsic power consumption
Technical specifications:	<ul style="list-style-type: none">Display/controller unit in the PDU enclosure rotatable through 180° and replaceableIntegral, fully-redundant power pack, power supply from all phasesError-tolerant PDU power supply redundant across all phasesVoltage V, current A, frequency HzActive power, active energy, apparent power, apparent energyPower factor (cosPhi) and phase angleZero conductor current measurement/load imbalance detectionFuse monitoring for PDUs with integral fuseBright TFT display, 128 x 128 pixels (RGB) with back-lighting and energy-saving mode to display output data and basic PDU configurationPosition sensors for display rotation and correct PDU representation on the websiteMulti-colour LEDs (green/amber/red) to indicate switching states and limits per individual output slotPower LED to indicate voltage
Measurement functions:	<ul style="list-style-type: none">Measurement per phase or infeedPlus measurement per output slotPowerful CPU (ARM Cortex A8)Digital input (floating contact)Additional alarm output/relay output (changeover contact)

Material:	Aluminium section, black anodised Slots: Plastic
Protection category IP to IEC 60 529:	IP 20
Standards:	EN 62368-1 EN 61000-3 EN 61000-4 EN 61000-6 EN 62053-21
Directives:	EMC Directive 2014/30/EU Low Voltage Directive 2014/35/EU
Supply includes:	Assembly parts
Options:	Type 3 overvoltage protection with interchangeable arresters while operational, with status monitoring, suitable for integration into PDU enclosure Residual current measurement (type B) per infeed/phase/fuse Monitoring of the optionally available overvoltage protection CMC III CAN bus sensors may be connected for ambient monitoring, max. 8 sensors Other enclosure colours are available
Product features	
Sockets:	12 x C 13 1 x C 19
To fit:	Enclosure type: VX IT enclosure frame Enclosure type: VX IT 19" mounting angles Height: ≥ 1200 mm Height: ≥ 1200 mm
Dimensions:	Width: 44 mm Depth: 70 mm Length: 845 mm
Rated operating voltage:	230 V (AC)
Infeeds:	Qty.: 1 Phases per infeed: 1~
Length of connection cable:	3 m
Ambient conditions:	Operating temperature: +5 °C...+50 °C Storage temperature: -20 °C...+70 °C Ambient humidity (non-condensing): 10 % - 95 %
Type of electrical connection:	IEC C20
Rated current (max.):	16 A

Output:	3.7 kW
Interfaces:	USB 2.0 port (USB-A) for mass configuration, firmware updates & data logging CAN bus interface (RJ 45) for a maximum of 8 ambient sensors Serial interface RS232 (RJ12) for LTE unit, scripting, CLI Use of own certificates/TLS 1.2 E-mail forwarding in case of alarm (SMTP) User administration including rights management LDAP(S)/Radius/Active Directory connection Syslog server connection (max. 2 servers) Fully redundant monitoring via 2nd network Network protocol: Web server (HTTP, HTTPS, SSL) SSH, Telnet, NTP Network protocol: TCP/IP v4 & v6, DHCP, DNS Network protocol: SNMP v1, v2c & v3, Modbus/TCP, OPC-UA Network protocol: MIB for linking into 3rd party DCIM software Network protocol: FTP/SFTP (update/file transfer)
Packs of:	1 pc(s).
Copper weight (kg per piece):	0
EAN:	4028177948297
Customs tariff number:	85366990
ETIM 7.0:	EC000330
ETIM 6.0:	EC000330
eCl@ss 8.0/8.1:	27142604
eCl@ss 6.0/6.1:	27142604
Product description:	PDU metered+ 16A/1P CEE 12xC13+1xC19, DK PDU metered+, Compact basic power distributor, incl. energy measurement per output slot, with network interface and display
Approvals	
Declarations:	Declaration of conformity