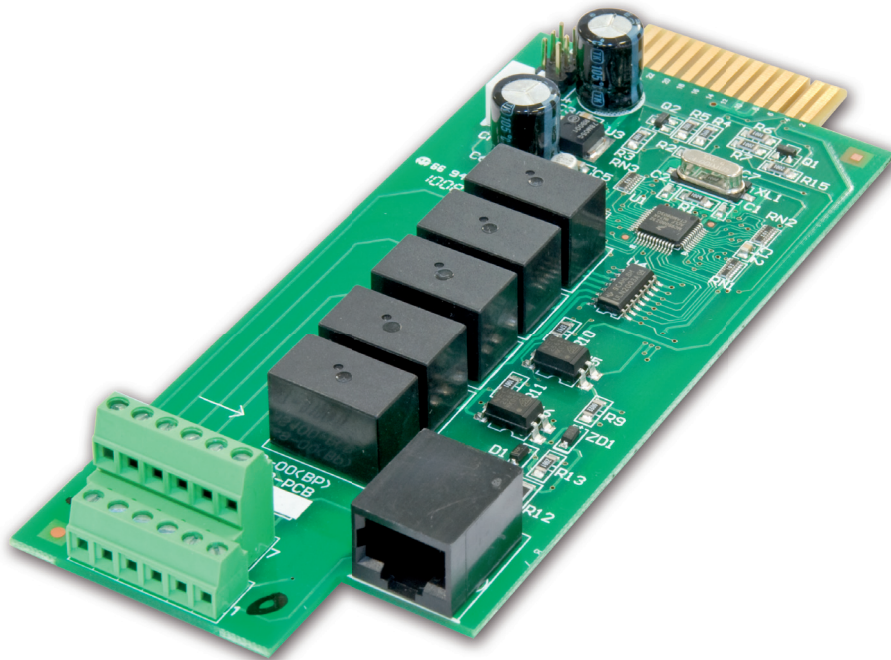


**INSTALLATION  
MANUAL**

# *Programmable Relay I/O card*

EN





# CONTENTS

1. FEATURES	5
2. SPECIFICATION	5
3. INTERNAL CIRCUIT	5
4. COMMUNICATION SETUP	6
5. CONFIGURATION	7
5.1 PASSWORD MENU.....	7
5.2 DRY CONTACT MANAGEMENT CARD MAIN MENU. ....	7



# 1. FEATURES

This relay I/O card is an UPS management product with 5 relay output contacts for monitoring the status and 1 input contact as UPO, Battery Mode Shutdown, Any Mode Shutdown and Remote ON/OFF UPS.

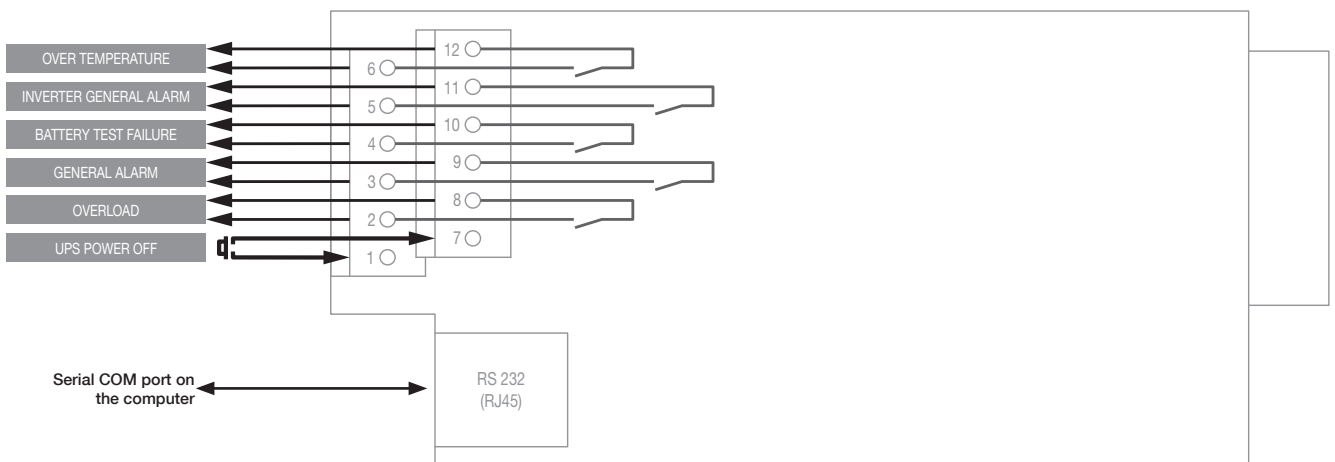
Features:

- Monitor UPS events.
- 5 programmable relay output contacts.
- Configurable normal open or normal close for each relay contact.
- Configurable input signal as UPO, Battery Mode Shutdown, Any Mode Shutdown and Remote ON/OFF UPS.
- Has the ability to protect up to 5 computer.

# 2. SPECIFICATION

Technical Specification	
Size	130x60 mm
Weight	200 g
Operating temperature	0÷40 °C
Operating humidity	10÷80 %
Contact rating	
Input	DRY contact
Relay R1-R5 AC voltage	240 V max
Relay R1-R5 AC current	1 A max

# 3. INTERNAL CIRCUIT

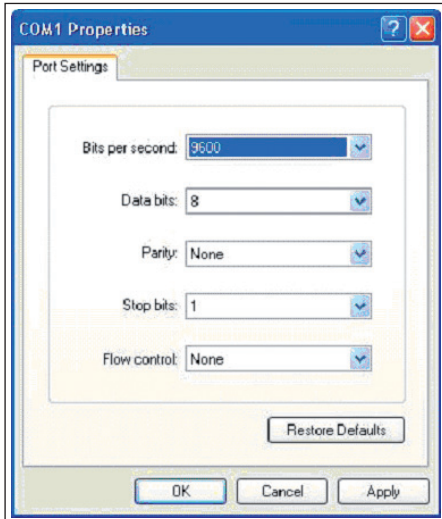


## 4. COMMUNICATION SETUP

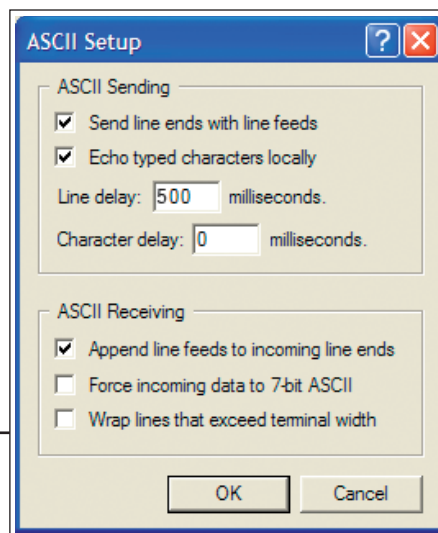
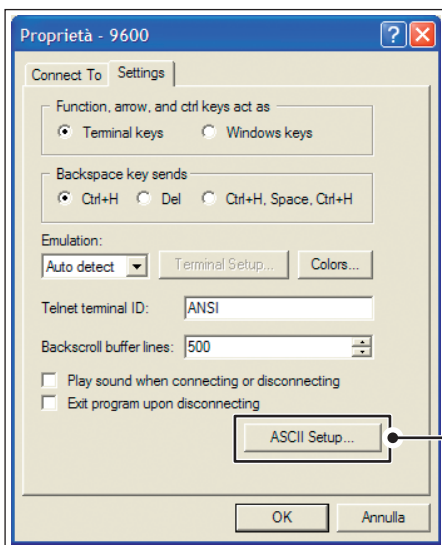


**WARNING!**  
Configure the card with UPS in stand-by or in manual by-pass mode.

1. Connect RJ45 port to pin5 of PC RS232 port.
2. In the Windows environment, launch the Hyper- Terminal program then open the specified COM port.



3. From File >> Property.



# 5. CONFIGURATION



**WARNING!**  
Configure the card with UPS in stand-by or in manual by-pass mode.

## 5.1 PASSWORD MENU.

- Type <ENTER> continuity 3 times, the password menu displays.
- Enter Password to Activate Maintenance Menu:
- Enter admin.

## 5.2 DRY CONTACT MANAGEMENT CARD MAIN MENU.

There are six item can be setting or inquire firmware version, user need base on menu number and enter the correct menu:

Lvl 0	Lvl 1	
1	Function Segment Logic	1 Segment 1 Logic, Current Setting (Normal Open)
		2 Segment 2 Logic, Current Setting (Normal Open)
		3 Segment 3 Logic, Current Setting (Normal Open)
		4 Segment 4 Logic, Current Setting (Normal Open)
		5 Segment 5 Logic, Current Setting (Normal Open)
		6 Segment 6 Logic, Current Setting (Normal Open)
		0 Exit
2	Output Segment Function Configure.	1 Segment 1 function, Current Setting (Overload)
		2 Segment 2 function, Current Setting (General Alarm)
		3 Segment 3 function, Current Setting (Battery Test Failure)
		4 Segment 4 function, Current Setting (Inverter General Alarm)
		5 Segment 5 function, Current Setting (Overtemperature)
		0 Exit
3	Input Segment Function Configure	1 Input Segment Function Configure (UPS Power OFF)
		0 Exit
4	Function Segment Active Delay Time	1 Segment 1 Active Delay Time, Current Setting (Immediately)
		2 Segment 2 Active Delay Time, Current Setting (Immediately)
		3 Segment 3 Active Delay Time, Current Setting (Immediately)
		4 Segment 4 Active Delay Time, Current Setting (Immediately)
		5 Segment 5 Active Delay Time, Current Setting (Immediately)
		6 Segment 6 Active Delay Time, Current Setting (Immediately)
		0 Exit
5	Return to Default Configuration	Return to Default(Y/N)?
6	Firmware Version	It displays the latest firmware version.
0	Exit	1 Exit and Save: exit setting mode and Save change data.
		2 Exit and Without Save: exit setting mode and without save change data
		0 Not Exit: still stay on setting mode, the menu will return to Main menu

# Socomec: our innovations supporting your energy performance

**1** independent manufacturer

**3,200** employees  
worldwide

**10** % of sales revenue  
dedicated to R&D

**400** experts  
dedicated to service provision

## Your power management expert



POWER  
SWITCHING



POWER  
MONITORING



POWER  
CONVERSION



EXPERT  
SERVICES

## The specialist for critical applications

- Control, command of LV facilities
- Safety of persons and assets
- Measurement of electrical parameters
- Energy management
- Energy quality
- Energy availability
- Energy storage
- Prevention and repairs
- Measurement and analysis
- Optimisation
- Consultancy, commissioning and training

## A worldwide presence

**8** production sites

- France (x3)
- Italy
- Tunisia
- India
- China (x2)

**27** subsidiaries

- Australia • Belgium • China • France
- Germany • India • Italy • Netherlands
- Poland • Romania • Singapore
- Slovenia • Spain • Switzerland • Thailand
- Tunisia • Turkey • UK • USA

**80** countries

where our brand is distributed

### HEAD OFFICE

#### SOCOMEK GROUP

SAS SOCOMEK capital 10633100 €  
R.C.S. Strasbourg B 548 500 149  
B.P. 60010 - 1, rue de Westhouse  
F-67235 Benfeld Cedex  
Tel. +33 3 88 57 41 41 - Fax +33 3 88 57 78 78  
info.scp.isd@socomec.com

### YOUR DISTRIBUTOR / PARTNER



I0MITYTWXX04-EN 03 05.2018

[www.socomec.com](http://www.socomec.com)

