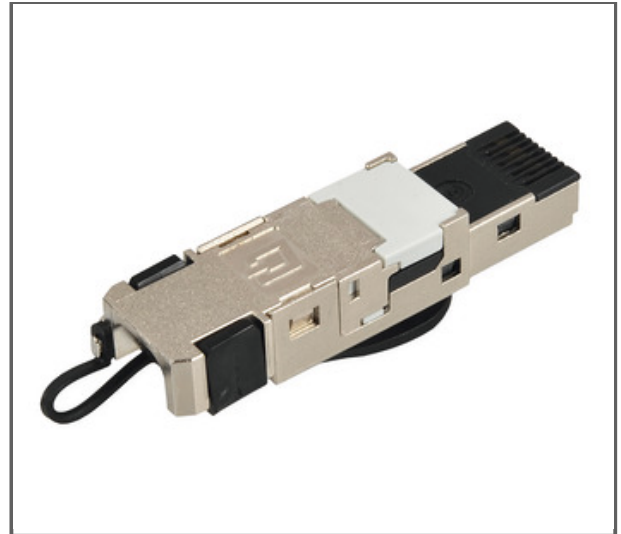


RJ45 field-installable connector Category 6

CORNING

Part Number:
CAXISS-00100-C003

The field-installable RJ45 connector is suitable for industrial environments offering outstanding performance for the transmission of digital data signals up to 10GbE. It is used in multiple applications, most commonly telecommunications, Ethernet networking, IP surveillance, factory automation and control.



Features and Benefits

Compliance with the new Class EA and IEEE 802.3an

Supports for PoE, PoE+ and UPoE applications

The connector can be used with flex and solid wire cables 0.4 - 0.76 mm (AWG 22-27)

Providing easy and fast installation without tools

Re-termination possible for multiple usage

RJ45 field-installable connector Category 6

CORNING

Specifications

Environmental Conditions

Temperature Range, Installation	-30 °C - 90 °C (-22 °F - 194 °F)
---------------------------------	----------------------------------

Design

Number of Pieces	2
Plug Type	RJ45 - 8/8
Housing Material	Metal
Housing Color	Black
Cable Diameter	5.5 mm to 8.5 mm

Electrical Specifications

Ampacity	≥ 1000 mA (DC)
Electric strength DC (conductor/conductor)	≥ 1000 V DC/AC peak
Contact resistance Rd	20 mΩ
Electrical strength DC (conductor/test plate)	≥ 1500 V DC/AC peak

Mechanical Specifications

IDC Contacts	Suitable for AWG 24-22 solid wires and for 26/7-22/7 flex wires
Reproducibility	Several times reusable
Housing Material	Metal

RJ45 field-installable connector Category 6

CORNING

General Specifications

Category	6
Halogen-free	Yes
Bandwidth	500 MHz

Dimensions

Height	23 mm
Width	18 mm
Depth	35 mm

Ordering Information

Weight	13 g
Packing Weight	13 g
Units per Delivery	1/1

Standards

RoHS	Free of hazardous substances according to RoHS 2011/65/EU
Component Standard	IEC 60603-7-5:2010 ANSI/TIA/EIA-568-B.2-10
Flame Retardance	Class UL94 V-0
Transmission Performance Link	Class EA (ISO/IEC 11801 Ed. 2.2 2011)



Corning Optical Communications GmbH & Co. KG • Lelpziger Strasse 121 • 10117 Berlin, Germany
+00 800 2675 4641 • FAX: +49 30 5303 2335 • www.corning.com/opcomm/emea