

Bulkhead-Style Fiber Optic Panels

Fiber :: Patch, Splice and Combination

Overview

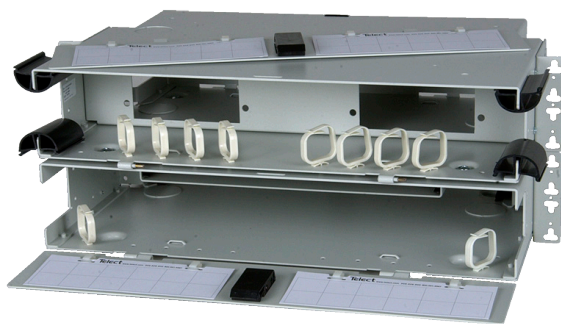
Telect bulkhead-style fiber optic panels provide cost-effective patch, splice and splitter capabilities in an industry-standard footprint. Panels range from 1 RU to 4 RU, with variable densities to support virtually any application or requirement.

Applications

- CATV
- MTSO
- Outside plant
- Central office
- Optical distribution/cross-connect

Primary Benefits

- Compliance in design
- Bend radius management
- Flammability safety
- Structural reliability
- Lightweight construction
- Standard footprint
- Simple installation
- Scalable to help manage costs
- Pre-loaded configurations accelerate deployment



LCX-C4RU

Specifications

Dimensions and Weight		
All Panels	Width	Depth
	17" (432 mm)	11" (280 mm)
	Height	Weight
1RU Patch or Splice Panel	1.75" (44 mm)	5 lbs. (2.27 kg)
2RU Patch or Splice Panel	3.5" (89 mm)	6 lbs. (2.72 kg)
3RU Patch or Splice Panel	5.25" (133 mm)	7 lbs. (3.18 kg)
4RU Patch or Splice Panel	7" (178 mm)	8 lbs. (3.63 kg)
2RU Combination Panel	3.5" (89 mm)	10 lbs. (4.54 kg)
4RU Combination Panel	7" (178 mm)	12 lbs. (5.44 kg)
6RU Combination Panel	10.5" (267 mm)	14 lbs. (6.35 kg)
8RU Combination Panel	14" (356 mm)	16 lbs. (7.26 kg)
Mechanical		
Enclosure type	Rack-mount panel	
Capacity	12, 24, 48, 72 or 96 ports based on configuration	
Connector type	SC, ST or FC based on configuration	
Material	Aluminum	
Panel mounting	19" or 23"	
Environmental		
Humidity	0 to 90%, non-condensing	
Temperature	-5 to 55° C	
Compliance		
Agency compliance	NEBS, EST1, Zone 4 seismic reliability	

For additional information on Telect's bulkhead-style fiber optic panels visit www.telect.com or contact our sales team at 1.509.926.6000.

Bulkhead-Style Fiber Optic Panels

Fiber :: Patch, Splice and Combination

Step one: Select panel size and density.

Step two: Select patch plates, splice trays and accessories as required.

Patch Plates

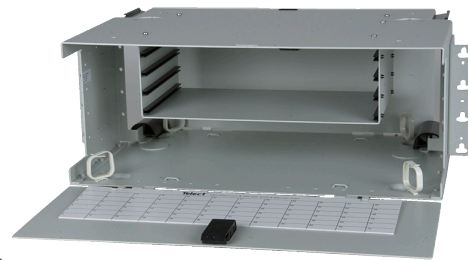
Description	Part Number	Patch Plates Required
1RU/12-port	LCX-M1RU	2
2RU/24-port	LCX-M2RU	4
3RU/48-port	LCX-M3RU	8
4RU/72-port	LCX-M4RU	12(6-port) patch plates
4RU/96-port	LCX-M4RU	12(8-port) patch plates



LCX-M1RU

Splice Panels

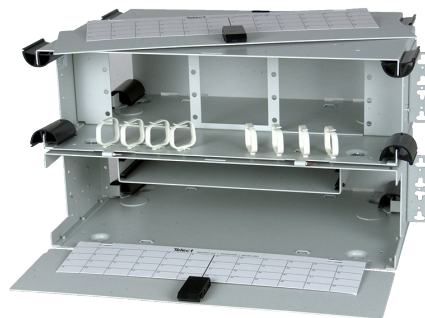
Description	Part Number	Splice Trays Required
1RU/12-terminations	LCX-S1RU	Included in panel
2RU/24-terminations	LCX-S2RU	1
3RU/48-terminations	LCX-S3RU	2
4RU/72-terminations	LCX-S4RU	3
4RU/96-terminations	LCX-S4RU	4



LCX-S4RU

Combination Panels

Description	Part Number	Patch Plates Required	Splice Trays Required
2RU/12-port	LCX-C2RU	2	1
4RU/24-port	LCX-C4RU	4	2
6RU/48-port	LCX-C6RU	8	3
8RU/72-port	LCX-C8RU	12(6-port)	4
8RU/96-port	LCX-C8RU	12(8-port)	4



LCX-C6RU

Accessories

Description	Part Number
6-Port Patch Plates	
SC/UPC	055-0000-6010
SC/APC	055-0000-6070
FC/UPC	055-0000-2010
FC/APC	055-0000-2070
ST/UPC	055-0000-3010
8-Port Patch Plates	
SC/UPC	055-0000-6080
SC/APC	055-0000-6090
FC/UPC	055-0000-2080
FC/APC	055-0000-2090
12-Port Patch Plates	
LC/UPC	055-0000-5010
LC/APC	055-0000-5090

Description	Part Number
Splice Tray	
24-fiber splice tray	LCX-S-HSF
Splice sleeves	KIT-SLEEVES
Cable Management	
Cable management hook kit, front panel, white	KIT-CMHOOK
Cable management hook kit, front panel, black	KIT-CMHOOK-BLK
Cable management hook kit, rear panel, white	KIT-CMRHOOK
Cable management hook kit, rear panel, black	KIT-CMRHOOK-BLK
Cable exit arc for 3RU and 4RU panels	KIT-CMARC
Clamp kit	KIT-CLMP
Additional Items	
Bonding/grounding kit	KIT-BOND
Blank faceplate	055-0000-9000