



1080p Full HD Resolution / PCAP Touch

I32ZD-02-45P0

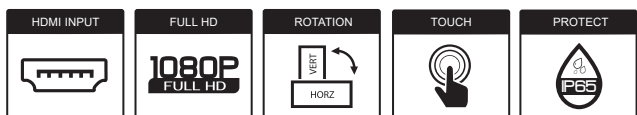
LARGE FORMAT

Technological advances and price decreases have increased the market for large touch screen displays substantially. These innovative designs, comprised of Full HD 32" displays and above, are creating opportunities in digital signage, corporate webinars and infotainment. Feel free to inquire about our large touch screen LCDs or engage us with your latest solution project and let our engineers position you for something big.



I32ZD LARGE FORMAT

I 1080P FHD / 32 INCH TOUCH DISPLAY MONITOR



FEATURES

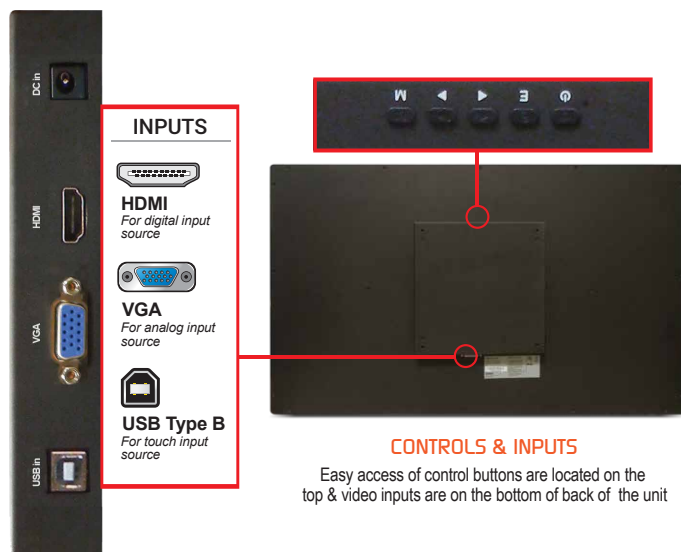
- 32 Inch, 1080p Full HD Resolution
- Zero Bezel Touch Screen
- 10-Points PCAP Touch
- LED Backlight Unit
- Landscape or Portrait Orientation Supported
- Water and Dust Resistant
- Support HDMI, VGA Inputs
- 3-Years Warranty

SPECIFICATIONS

DISPLAY	I32ZD-02-45PO
Screen Size	32 In
Resolution	1920 x 1080
Backlight	LED
Aspect Ratio	16 : 9
Viewing Angle	178° / 178°
Response Time	8ms
Brightness	450cd/m ²
Contrast Ratio	3000 : 1
Color Depth	16.7 M
OPS SLOT	
OPS Module Slot	N/A
INTERFACE	
HDMI	1
VGA	1
TOUCH TECHNOLOGY	
Material (Glass)	3mm Strengthen Glass
Type	Projected Capacitive (PCAP)
Points	10 MAX (Dependant on OS / Browser / Software)
Accuracy	2mm
Touch Response Time	10ms (typ)
Surface Durability	Mohs' 7H
Touch Activation Force	10g
Light Transmission	86%
Interface	USB (B-Type)
CABINET	
Material	Metal
POWER	
Input Voltage	12V DC +/- 5%
Electrical Ratings	AC 100V ~ 240V, 50/60Hz
TEMPERATURE	
Operating	32° F ~ 104° F (0° C ~ 40° C)
DIMENSIONS (WxHxD)	
Inch (in)	29.8 x 17.8 x 3.1
Millimeter (mm)	757.5 x 451.5 x 78.5
WEIGHT	
Net Weight	44.1 lbs (20 kg)
VESA™	
Mount Size (mm)	200 x 200 / 300 x 400

Specifications subject to change without any notice

INTERFACE & OSD



DIMENSION

