



RapidRun[®] Plenum-Rated Multi-Format Runner Cable

- CMP rated for installations in plenum rated spaces
- Connectors equipped with a protective pulling cap capable of 30lbs of pulling tension
- Three 28AWG coaxial cables with braided copper shielding, three 26AWG individually shielded twisted pair, and a single 26AWG pair
- Lifetime Warranty

*The specifications apply only to the raw cable used to construct the cable assemblies

Specifications: RapidRun® Plenum-Rated Multi-Format Runner Cable

Electrical Characteristics:

3 Coax Conductors:

Impedance:	75 ± 50hm
Capacitance:	53 ± 2pF/ ft nom
Velocity of Propagation:	80%
DC Resistance:	0.221Ω/m at 20°C
Dielectric Strength:	750VAC/1 minute min.
Insulation Resistance:	100MΩ/KM at 20°C
Attenuation (dB/6m):	
	dB/100ft
	1.0MHz 0.6
	3.6MHz 1.2
	5.0MHz 1.4
	7.0MHz 1.7
	9.0MHz 2.0
	10.0MHz 2.1
	30.0MHz 3.8
	50.0MHz 5.1
	100.0MHz 7.6

3 Twisted Pair Conductors

DC Resistance:	0.139Ω/m at 20°C
Dielectric Strength:	750VAC/ minute min.
Insulation Resistance:	100MΩ/KM at 20°C

Physical Characteristics:

Voltage Rating:	300V	Approvals:	RoHS Compliant
Temperature Rating:	75°C	Warranty:	Lifetime
Temperature Range:	-25° ~ 75°C	Package Type:	Polybag
Minimum Bend Radius	82.5mm		

Conductor (Qty. 3):

Conductor Type:	28AWG 7/36 Tinned Copper
Dielectric:	Avg. Thickness: 0.13mm Cellular FEP
Shield:	Braid 94% Coverage Tinned Copper
Insulation:	Avg. Thickness: 0.20mm Low Smoke PVC: (1) red, (1) blue, (1) green

Conductor (Qty. 3 twisted pair):

Conductor Type:	26AWG 7/34 Tinned Copper
Foil Shield:	Aluminum 100% coverage
Insulation:	Avg. Thickness: 0.13 mm FEP

Conductor (Qty. 2 conductors):

Conductor Type:	26AWG 7/34 Tinned Copper
Insulation:	Avg. Thickness: 0.13 mm FEP

Overall Cable:

Foil Shield:	Aluminum Polyester Tape – 125%
Braided Shield:	85% Coverage Tinned Copper
Drain Wire:	24AWG 7/0.20 Tinned Copper
Jacket:	Avg. Thickness: 2.49mm Low Smoke PVC Orange Heat Shrink 6.80 ± 0.15mm

RapidRun Din Connector:

Connector Type:	DIN 15 pin
Contact Material:	Brass, 3µm Gold Plating
Insulation:	Black PBT
Dimensions:	16.0 x 39.0mm

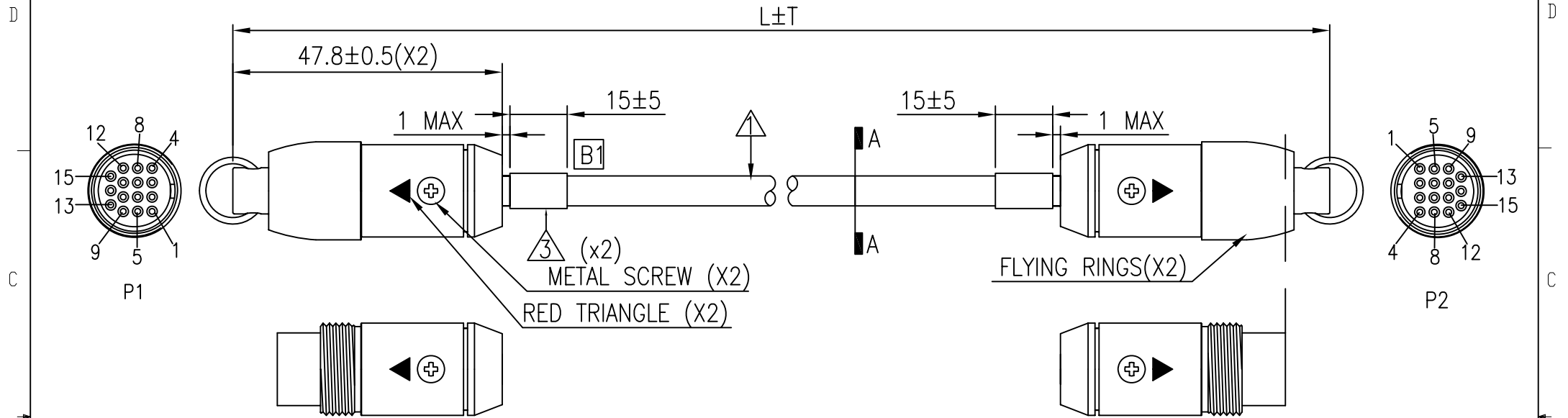


Specifications: RapidRun® Plenum-Rated Multi-Format Runner Cable

Part Number	Description	Weight (lbs)
60010	15ft RapidRun Plenum-rated Multi-Format Runner Cable	1.01
60011	25ft RapidRun Plenum-rated Multi-Format Runner Cable	1.60
60012	35ft RapidRun Plenum-rated Multi-Format Runner Cable	2.20
60013	50ft RapidRun Plenum-rated Multi-Format Runner Cable	3.33
60014	75ft RapidRun Plenum-rated Multi-Format Runner Cable	4.70
60015	100ft RapidRun Plenum-rated Multi-Format Runner Cable	6.27
60016	125ft RapidRun Plenum-rated Multi-Format Runner Cable	7.92
60017	150ft RapidRun Plenum-rated Multi-Format Runner Cable	9.40



REV.	CHANGE DETAIL	ECO NO.	DATE
B	CHANGE HEAT SHRINK TUBE	20120008	2012.1.6

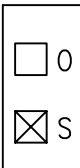
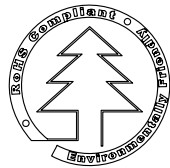


P/N CHART

60010	15	4572	+152/-51	8	12.5
60011	25	7620	+305/-152	10	13
60012	35	10668	+305/-152	10	13
60013	50	15240	±305	14	16
60014	75	22860	±305	14	16
60015	100	30480	±305	14	16
60016	125	38100	±305	16	18
60017	150	45720	±305	16	18
P/N(xxxxx)	***	L	T	X''	Y''

DRAWING APPROVED _____ DATE: _____	
SAMPLE APPROVED PER _____ DATE: _____ DRAWING SPECIFICATIONS	
PROPRIETARY & CONFIDENTIAL. THE INFORMATION CONTAINED IN THIS DRAWING IS THE SOLE PROPERTY OF CABLES TO GO. ANY REPRODUCTION IN PART OR AS A WHOLE WITHOUT THE WRITTEN PERMISSION OF CABLES TO GO IS PROHIBITED.	
mm	TITLE DIN15P FEMALE TO DIN15P FEMALE
SCALE NONE	CUS. NAME CTG
SHEET 1/4	CUS. P/N SEE "P/N CHART"
DIMENSIONAL TOLERANCES UNLESS OTHERWISE NOTED	
.X ±	.XX ±
.XXX ±	ANGLES ±
REV. B	CUS. REV
DRAW NO. P1108010-E	
ENG. Dave	DATE 01-06-2012
CHECKED Sean	DATE 01-06-2012
APPROVED Gary	DATE 01-06-2012

MANUFACTURED IN CHINA



8 7 6 5 4 3 2 1

SHIELD: AL MYLAR WRAP
DRAIN1:28AWG(7/0.127TC), X3

CONDUCTOR3:26AWG(7/0.16TC),X6

INSULATION4:FEP, ID: $\phi 0.90 \pm 0.05$
(BLUE&PURPLE, RED&ORANGE, YELLOW&GREEN 3PAIRS)

JACKET: KYNAR, BLACK

CONDUCTOR1:28AWG(7/0.12TC),X3

SHIELD:SPRIAL 94% COVERAGE

INSULATION1:CELLULAR FEP, ID: $\phi 1.55 \pm 0.05$ mm

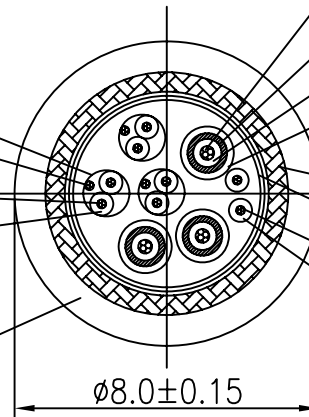
INSULATION2: KYNAR, ID: $\phi 2.4 \pm 0.10$ mm
(RED, GREEN, BLUE)

SHIELD2: BRAID, 85% COVERAGE

SHIELD1: AL MYLAR WRAP

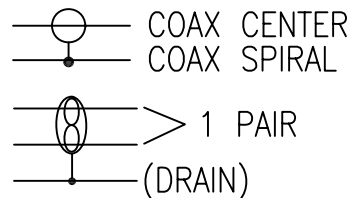
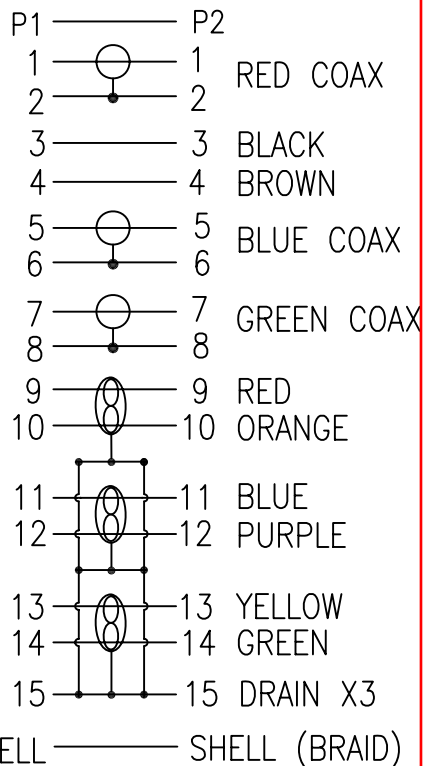
CONDUCTOR2:26AWG(7/0.16TC),X2

INSULATION3: FEP, ID: $\phi 0.75 \pm 0.05$
(BLACK, BROWN)

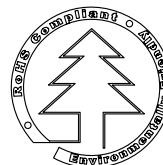


SEC A-A
SCALE:NTS

PIN OUT



MANUFACTURED IN CHINA



DRAWING APPROVED _____		DATE: _____	
SAMPLE APPROVED PER _____		DATE: _____	
PROPRIETARY & CONFIDENTIAL. THE INFORMATION CONTAINED IN THIS DRAWING IS THE SOLE PROPERTY OF CABLES TO GO. ANY REPRODUCTION IN PART OR AS A WHOLE WITHOUT THE WRITTEN PERMISSION OF CABLES TO GO IS PROHIBITED.			
	mm	TITLE DIN15P FEMALE TO DIN15P FEMALE	
SCALE	NONE	CUS. NAME CTG	
SHEET	2/4	CUS. P/N SEE "P/N CHART"	
DIMENSIONAL TOLERANCES UNLESS OTHERWISE NOTED		DRAW NO. P1108010-E	
.X ±	.XX ±	ENG. DATE Dave 01-06-2012	
.XXX ±	ANGLES ±	CHECKED DATE Sean 01-06-2012	
REV. B	CUS. REV	APPROVED DATE Gary 01-06-2012	

