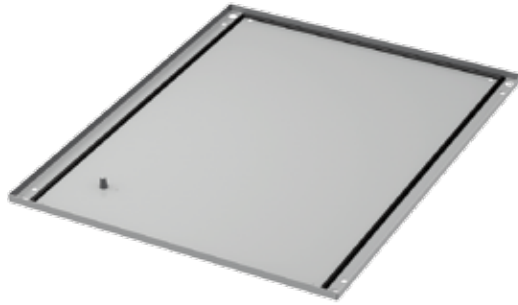


0-MM SOLID BASE



APPLICATION

ProLine G2 0-mm Solid Bases are used to close the bottom opening on an enclosure frame.

FEATURES

- Casters or levelers can be used to attach the solid base, in place of the included hardware
- Seamless polyurethane gasket (UL component recognized) provides a water-tight, dust-tight seal against moisture and contaminants

SPECIFICATIONS

- 16-gauge (1.5 mm) steel
- Includes four M12 hex bolts for installation
- 16-gauge (1.5 mm) steel
- Includes four M12 hex bolts for installation

EMC 0-mm Solid Bases – Additional Specifications:

- Plated to provide corrosion resistance while maintaining a metal-to-metal contact with the metal fiber gasket
- Metalized non-woven fabric EMI/RFI material covering UL94HP rated urethane foam gasket
- Plating exposed in interior and paint over plated exterior
- Longer lead times required for EMC items

FINISH

- Polyester powder paint; RAL 7035 textured light gray standard
- Custom colors available

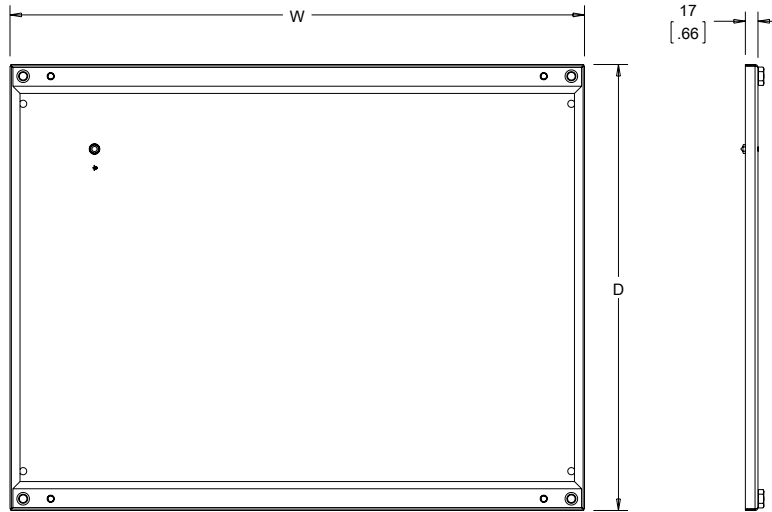
ACCESSORIES

- Caster Kit
- Levelers
- Frame Feet
- Frame Floor-Mounting Bracket

BULLETIN: P40

Standard Product

Catalog Number	W (mm)	W (in.)	D (mm)	D (in.)	Fits Frame WxD (mm)	Description
P2B045	390	15.4	460	18.1	400X500	Painted
P2B046	390	15.4	560	22.0	400X600	Painted
P2B064	590	23.2	360	14.2	600X400	Painted
P2B065	590	23.2	460	18.1	600X500	Painted
P2B066	590	23.2	560	22.0	600X600	Painted
P2B066HF	590	23.2	560	22.0	600X600	EMC
P2B068	590	23.2	760	29.9	600X800	Painted
P2B084	790	31.1	360	14.2	800X400	Painted
P2B085	790	31.1	460	18.1	800X500	Painted
P2B086	790	31.1	560	22.0	800X600	Painted
P2B086HF	790	31.1	560	22.0	800X600	EMC
P2B088	790	31.1	760	29.9	800X800	Painted
P2B0810	790	31.1	960	37.8	800X1000	Painted
P2B0104	990	39.0	360	14.2	1000X400	Painted
P2B0105	990	39.0	460	18.1	1000X500	Painted
P2B0108	990	39.0	760	29.9	1000X800	Painted
P2B0106	990	39.0	560	22.0	1000X600	Painted
P2B0106HF	990	39.0	560	22.0	1000X600	EMC
P2B0124	1190	46.9	360	14.2	1200X400	Painted
P2B0125	1190	46.9	460	18.1	1200X500	Painted
P2B0126	1190	46.9	560	22.0	1200X600	Painted
P2B0128	1190	46.9	760	29.9	1200X800	Painted
P2B0164	1590	62.6	360	14.2	1600X400	Painted
P2B0165	1590	62.6	460	18.1	1600X500	Painted
P2B0166	1590	62.6	560	22.0	1600X600	Painted
P2B0168	1590	62.6	760	29.9	1600X800	Painted
P2B0185	1790	70.5	460	18.1	1800X500	Painted
P2B0186	1790	70.5	560	22.0	1800X600	Painted
P2B0188	1790	70.5	760	29.9	1800X800	Painted



89129490

Model	Component	Type	Width	Depth	Specialty	Catalog Number
P2	B	0	8	6	Blank	= P2B086
PROLINE G2	Base	0 = solid base 0mm 1 = fully-sealed plinth P1 = plinth base 100mm P2 = plinth base 200mm GP = gland plate T = transportation base M = mobile base	mm 18 = 1800 16 = 1600 14 = 1400 12 = 1200 10 = 1000 8 = 800 6 = 600 4 = 400	mm 10 = 1000 8 = 800 6 = 600 5 = 500 4 = 400	Blank = standard HF = EMC protected G = Galvanized steel	NOTE: Not every combination is available as a standard product.