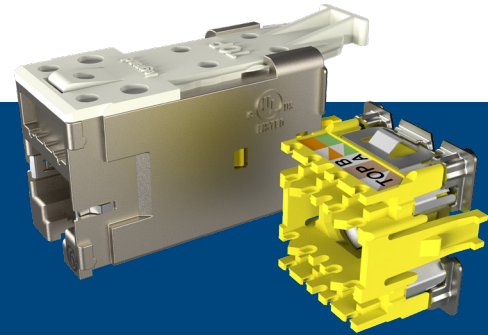


Clarity® Shielded High Density Jack (CAT 6/CAT 6A)



Overview

Legrand's line of Clarity® Shielded High Density Jacks incorporate mechanical and electrical advancements to provide industry-leading protection against EMI with CAT 6 and CAT 6A performance options. The jacks are designed with electrical and data transmission performance headroom and feature an efficient termination method with a lacing cap design. The rear-loading latching allows the jack to be installed in compatible HDJ mounting solutions from Legrand – including patch panels, workstation faceplates, surface mount boxes and furniture bezels.

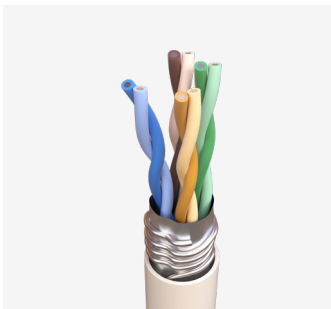
Features and Benefits

- **Accepts Colored Icons:** Allows for port identification and network segmentation
- **Rear-Loading Mounting:** Securely mounts into panels, faceplates and surface mount boxes
- **Lacing Cap Termination:** Reduces time needed for termination with plastic compression tool
- **High Density Footprint:** Can accommodate 48 ports in 1RU

Product SKU	Description
HDJS6	Clarity CAT 6 Shielded High Density Jack, T568A/B
HDJS6A	Clarity CAT 6A Shielded High Density Jack, T568A/B

NOTE: Available in packs of 25 with free compression tool. Add "25" at end of part number

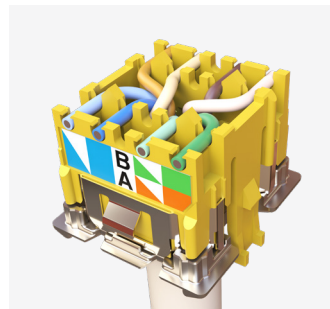
Efficient Termination:



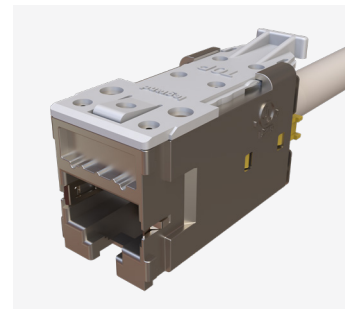
Step 1
Strip and prepare cable



Step 2
Feed wires through cap

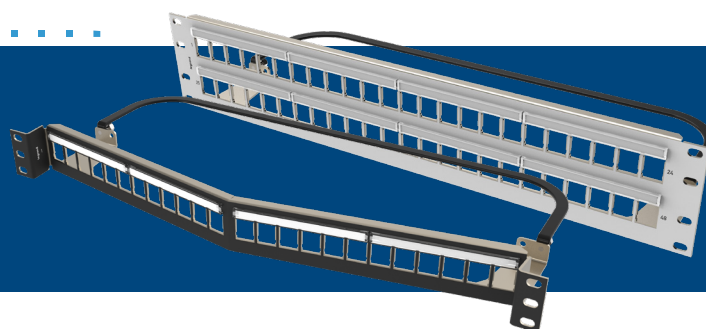


Step 3
Lace wires in corresponding slots and trim flush



Step 4
Seat cap in jack and use compression tool

Shielded High Density Jack Mounting Options



Mounting Options

The Clarity® Shielded High Density Jack utilizes Legrand’s innovative rear-loading HDJ footprint, allowing for compatible installation into existing HDJ mounting solutions and new shielded modular patch panels. In addition, due to the shared HDJ footprint, fiber and A/V modules can be installed alongside copper modules in any HDJ mounting solution, allowing for mixed media within the same rack unit or device-end mounting solution.

Clarity® Shielded High Density Patch Panels

Compatible modular patch panels are available in flat or angled variations, white or black overlays, and standard to density port densities. The panels provide industry-leading protection against EMI when paired with the Clarity Shielded High Density Jacks.

Product SKU	Description
PHDHDJSU24	Clarity 24-Port, 1RU Shielded High Density Jack, Unloaded Flat Panel - Black
PHAHDJSU24	Clarity 24-Port, 1RU Shielded High Density Jack, Unloaded Angled Panel - Black
PHDHDJSU48	Clarity 48-Port, 1RU Shielded High Density Jack, Unloaded Flat Panel - Black
PHAHDJSU48	Clarity 48-Port, 1RU Shielded High Density Jack, Unloaded Angled Panel - Black
PSDHDJSU48	Clarity 48-Port, 2RU Shielded High Density Jack, Unloaded Flat Panel - Black
PSAHDJSU48	Clarity 48-Port, 2RU Shielded High Density Jack, Unloaded Angled Panel - Black
PHDHDJSU24-W	Clarity 24-Port, 1RU Shielded High Density Jack, Unloaded Flat Panel - White
PHAHDJSU24-W	Clarity 24-Port, 1RU Shielded High Density Jack, Unloaded Angled Panel - White
PHDHDJSU48-W	Clarity 48-Port, 1RU Shielded High Density Jack, Unloaded Flat Panel - White
PHAHDJSU48-W	Clarity 48-Port, 1RU Shielded High Density Jack, Unloaded Angled Panel - White
PSDHDJSU48-W	Clarity 48-Port, 2RU Shielded High Density Jack, Unloaded Flat Panel - White
PSAHDJSU48-W	Clarity 48-Port, 2RU Shielded High Density Jack, Unloaded Angled Panel - White

NOTE: Jacks are ordered separately

Clarity® Workstation Mounting Options



HDJ Workstation Faceplates & Furniture Plates

HDJ furniture mounting plate accepts HDJ series jacks or modules.

PART NO.	DESCRIPTION
403HDJ11	1-Port Faceplate, HDJ Jack, Single-Gang
403HDJ12	2-Port Faceplate, HDJ Jack, Single-Gang
403HDJ13	3-Port Faceplate, HDJ Jack, Single-Gang
403HDJ14	4-Port Faceplate, HDJ Jack, Single-Gang
403HDJ16	6-Port Faceplate, HDJ Jack, Single-Gang
403HDJ212	12-Port Faceplate, HDJ Jack, Dual-Gang
421HDJ4	4-Port HDJ Furniture Plate, TIA-569 Opening
419HDJ4	4-Port HDJ Rectangular Stylistics Frame
AB2HDJ	2-Port Bezel AB, HDJ, Fits WM RFB4 RT Series Brackets, 10-Pack
HDJTJA20*	HDJ TracJack Adapter - Fog White, 20-Pack

NOTE: Standard color is Fog White. Add -88 for White, -00 for Black or -78 for Gray. *Also available in Ivory -13.

HDJ Surface Mount Boxes

Compatible with HDJ series jacks. Screws and double-sided adhesive tape are included for mounting onto almost any surface.

PART NO.	DESCRIPTION
404HDJ1	1-Port HDJ Plastic Surface Mount Box, <i>Plenum Rated</i>
404HDJ2	2-Port HDJ Plastic Surface Mount Box, <i>Plenum Rated</i>
404HDJ4	4-Port HDJ Plastic Surface Mount Box - Fog White

NOTE: Include snap-in label fields. Standard color is Fog White. Add -88 for Cloud White