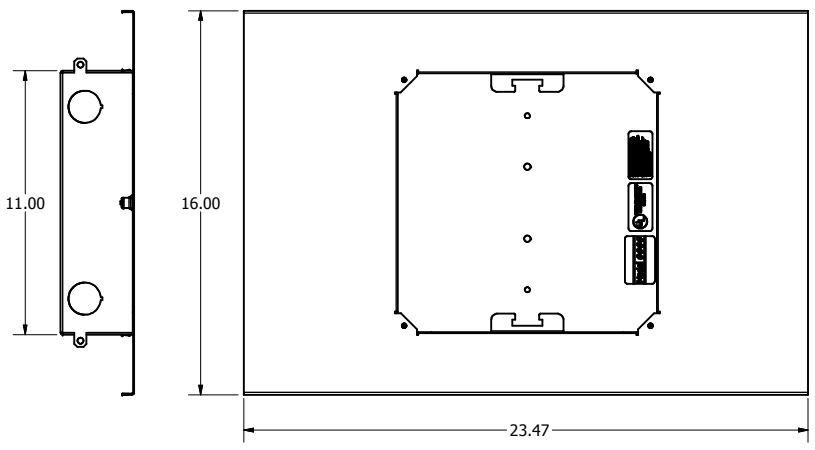
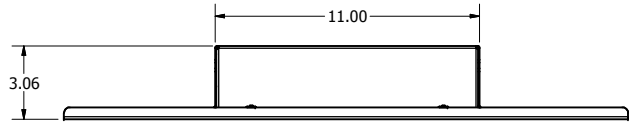


REVISION HISTORY				
ZONE	REV	DESCRIPTION	DATE	APPROVED
All	1	Released	11/12/2015	RLC
All	2	Updated Images	4/4/2017	RLC
All	3	Updated P/N List	9/20/2018	RLC

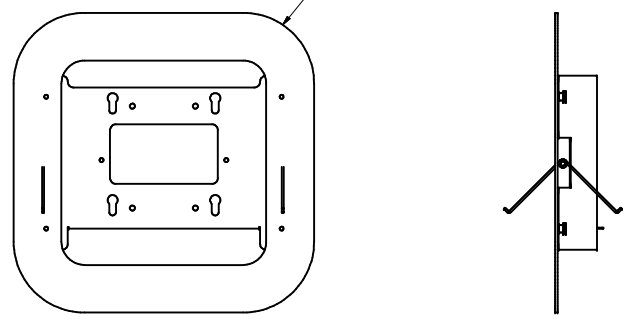


CONFIGURATION TABLE		
Access Point	Oberon Model	Trim P/N
Cisco 2700/3700	1044-CCOAP	37-104X-CCOAP
Cisco 2800/3800	1044-CCOAP3800	37-104X-CCOAP3800
Cisco 4800	1044-COAP4800	37-104X-COAP4800
Aruba AP224/225	1044-AP225	37-104X-AP225
Aruba AP314/315	1044-AP315	37-104X-AP315
Aruba AP324/325	1044-AP325	37-104X-AP325
Aruba AP334/335	1044-AP335	37-104X-AP335

**TILE BRIDGE**

- NOTES:**
- Weight: 10 lbs.
  - Material: 20 Gauge Galvanized Steel Backbox  
White Powder Coat Steel Trim, Gauges  
Based on Model Number

Trim Specific To Cisco or Aruba  
Wireless Access Points



**TRIM**

- Includes:**
- Fire Foam Grommet
  - Conduit Fittings
  - Installation Hardware Specific to Access Point

UL Listed - File Number E348543  
OSHPD Approved - OPM-0110-13

NOTE: All materials used in the construction of Oberon products must be RoHS compliant and meet RoHS2 Directive 2011/65/EU. Contact Oberon engineering if RoHS compliant materials are not available.

DRAWN	11/12/2015	Oberon, Inc. - 1315 S. Allen St. - State College, PA 16801		
CHECKED	11/12/2015	TITLE		
RLC		Model 1044-XX		
QA				
MFG	11/12/2015	SIZE	DWG NO	REV
RLC		C	1044 Series	3
APPROVED	11/12/2015	SCALE	SHEET 1 OF 1	
RLC				
TOLERANCE:	.0 = +/- .030			
	.00 = +/- .015			
	.000 = +/- .005			