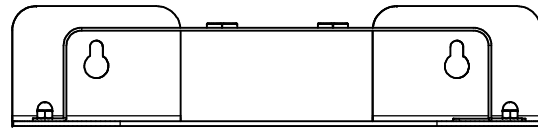
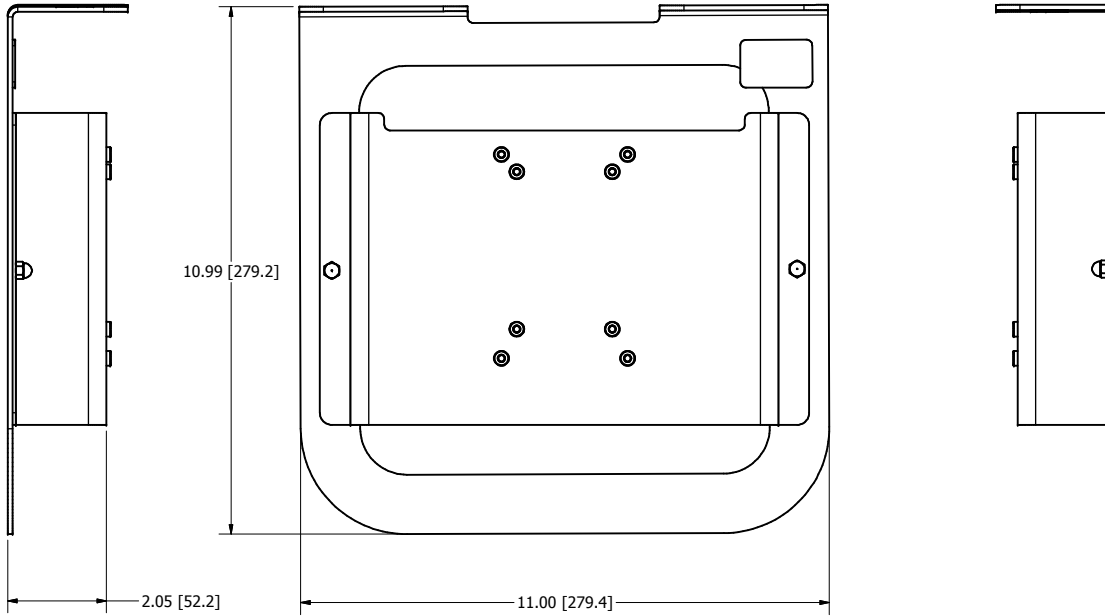
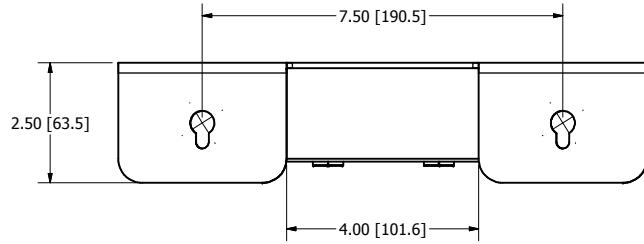


REVISION HISTORY				
ZONE	REV	DESCRIPTION	DATE	APPROVED
All	1	Released	1/29/2018	ATK



ORDERING INFORMATION:

MANUFACTURER/MODEL: OBERON ENCLOSURE MODEL:

- | | |
|---------------------------|----------------------|
| Cisco 2600/2700/3500/3700 | Model 1006-CCOAP |
| Cisco 2800/3800 | Model 1006-CCOAP3800 |
| Cisco HLA | Model 1006-HLA |
| Aruba Networks AP225 | Model 1006-AP225 |
| Aruba Networks AP325 | Model 1006-AP325 |
| Extreme Networks 3925 | Model 1006-EX3900 |

NOTES:

- Weight: 6 lbs.
- Material: 10 Gauge Steel Base White Powder Coat
16 Gauge Steel Mounting Bracket White Powder Coat

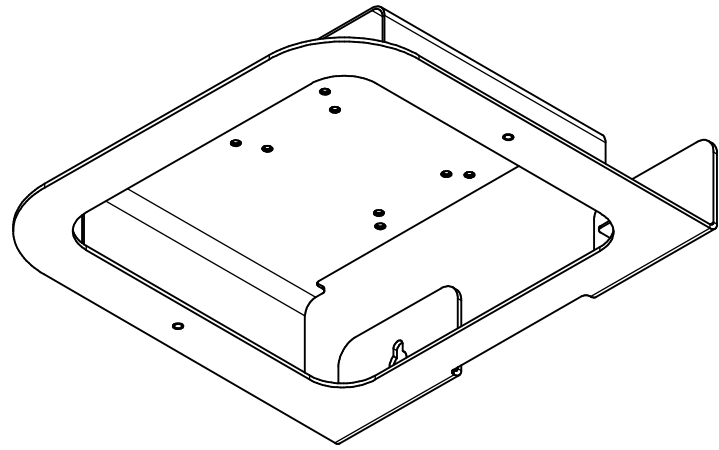
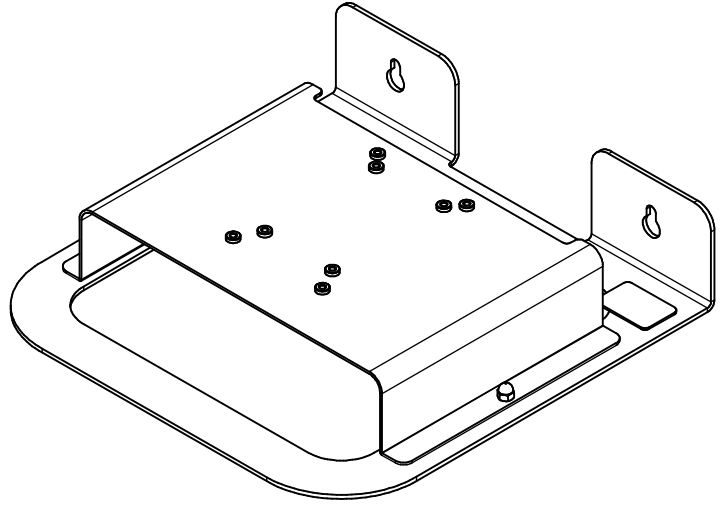
Includes:

- Installation Hardware for Access Point
- Hardware for wall attachment supplied by customer

DRAWN RLC	4/4/2016	Oberon, Inc. - 1315 S. Allen St. - State College, PA 16801		
CHECKED RLC	4/4/2016	TITLE		
QA		Model 1006-CCOAP3800		
MFG RLC	4/4/2016	SIZE C	DWG NO 2638	REV 1
APPROVED RLC	4/4/2016	SCALE	SHEET 1 OF 2	
TOLERANCE:	.0 = +/- .030 .00 = +/- .015 .000 = +/- .005			

NOTE: All materials used in the construction of Oberon products must be RoHS compliant and meet RoHS2 Directive 2011/65/EU. Contact Oberon engineering if RoHS compliant materials are not available.

ISOMETRIC VIEWS



DRAWN	RLC	4/4/2016	Oberon, Inc. - 1315 S. Allen St. - State College, PA 16801		
CHECKED	RLC	4/4/2016	TITLE		
QA			Model 1006-CCOAP3800		
MFG	RLC	4/4/2016	SIZE	DWG NO	REV
APPROVED	RLC	4/4/2016	C	2638	1
TOLERANCE:	.0 = +/- .030		SCALE	SHEET 2 OF 2	
	.00 = +/- .015				
	.000 = +/- .005				