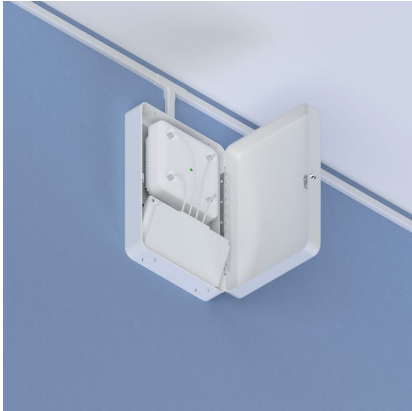




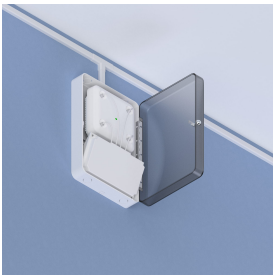
Model 39-1016-ANTPLATE

Articulating Antenna Mount for Oberon Model 1016 Series

Category: **Hi-Bar**



The Model 39-1016-ANTPLATE is an antenna bracket for the Cisco AIR-ANT2566P4W-R in the Model 1016 series.



Features & Benefits

- Articulating antenna bracket
- Keyhole slots and other mounting features for Cisco Access Points

Technical Specifications

- Galvanized Steel Antenna Bracket and Mounting Plate
- Size: 16" x 11" x 2" deep
- Shipping Weight: 5 lbs.

Measurements (Maximum values*):

- Width: 11 in.
- Height: 16 in.
- Depth: 2 in.
- Item Weight: N/A
- Shipping Weight: 5 lbs.


Includes


- (1) Antenna Bracket
- (1) Mounting Plate
- (6) #8-32 x 3/8 Screws
- (4) #8-32 x 1/4 Screws
- (4) #6 Tapping Screws
- Installation Instructions

Available Accessories


- [39-1016-SPKRMNT](#) - Mounting bracket assembly for the Model 1016 series

Documentation Links

 [Spec Sheet](#) - [oberoninc.com/index.php?option=com_content&view=article&id=3051&Itemid=399](#)

 [SECTION 27_21_33 DATA COMMUNICATIONS WIRELESS ACCESS POINTS](#)
https://oberoninc.com/images/WebDocs/SECTION_27_21_33_DATA_COMMUNICATIONS_WIRELESS_ACCESS_POINTS.pdf

Additional Information

 For Oberon product CAD files, contact customer service


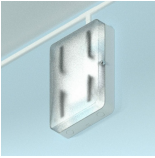


Configurations: Model 1016

Please specify configuration when ordering.

| | | |
|-------|---|--|
| 1016- | | |
| | DOOR STYLE 00 (Opaque White) C (Frosted Clear) | OPTIONAL BRACKET ANTPLATE (Articulating mount for directional antenna) SPKRMNT (Mounting kit to attach to speaker mount tripods) (otherwise leave blank) |

Examples:

| | |
|---|---|
| <u>1016-00-ANTPLATE-SPKRMNT</u> | Model 1016 with opaque white door and both articulating antenna mount and speaker tripod mounting kit |
|---|---|

| SKU | | Description |
|--|------------------|--|
|  | 1016-00 | 18 in. ABS AP Lock-box: Solid door |
|  | 1016-C | 18 in. ABS AP Lock-box: T-bar, Translucent door |
|  | 1016-00-ANTPLATE | 18 in. Polycarbonate AP Lock-box: Solid door with articulating antenna bracket |
|  | 1016-C-ANTPLATE | 18 in. Polycarbonate AP Lock-box: Translucent door with articulating antenna bracket |

Images and documents may depict similar models in the product series.