



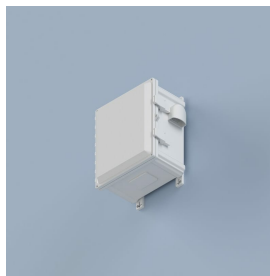
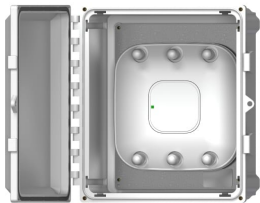
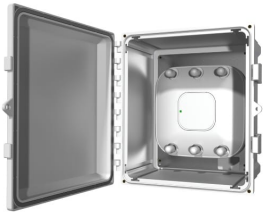
Model 1026-16148-C

16 in. NEMA 4 Plastic Wi-Fi Access Point Enclosure with Hinged Clear Door

Category: Skybar



NEMA 3R Skybar™ enclosure protects APs with internal or external antennas from all vendors in challenging indoor/outdoor environments. This rugged polycarbonate enclosure protects the AP from falling water, dust, and impacts, and is transparent to wireless signals so APs with body integrated antennas or small detachable antennas may be protected. The enclosure has a hinged door, molded-in padlock hasps for locking, interior ABS panel for attaching APs, polycarbonate breather vents, and polycarbonate bottom drain vent. Paintable.



Features & Benefits

- Compact, low-profile AP enclosure for indoor and outdoor applications such as stadiums and public hotspots
- UV-stabilized for exposure to direct sunlight
- Virtually transparent to wireless signals
- Universal mounting plate allows easy installation of most vendors' APs
- Cover is hinged; cover can be latched and locked with padlock (not included)

Technical Specifications

- Design: Polycarbonate NEMA AP enclosure designed for wall or mast mounting indoors or outdoors, where secure mounting is required. Large enough for Cisco 3500/3600 APs. Clear, fully hinged, lockable door
- Performance: Designed to NEMA 3R specifications for indoor/ outdoor wet, dirty, or corrosive environments. UV stabilized for exposure to direct sunlight. Transparent to wireless signals. Temperature rating from -20 to 240°F. Paintable
- Fully hinged, gasketed door with hasps for padlock
- Internal plastic universal mounting panel
- Large enough for Cisco 3800 DART connector and external antenna
- Construction: UL listed to UL50 and UL508A (File #E319779). Back-box is light gray UL94-5VA polycarbonate plastic. Door is polycarbonate plastic
- Specify opaque grey door as -00 or tinted clear door as -C. See ordering guide below
- For ventilation and drain kit, specify -V. See ordering guide below. -V includes a NEMA 3 capable vent for permitting air circulation, and a drain for installation in bottom of enclosure. Also includes a cord grip

- large enough for two Cat. 6A cables
- For outdoor installation, the 1026 is very light grey to reduce solar loading. Painting the 1026 a darker color will increase solar loading. Avoid mounting the 1026 where it is directly exposed to the sun
- Size: See Configuration Guide below

Standards for Safety

- Designed to NEMA 3R, 4, 4X, 12, and 6P, and IEC529-IP68 specifications for indoor/ outdoor wet, dirty, or corrosive environments
- UL508A (File #E319779) listed; back-box and cover are light gray UL94-5VA Polycarbonate; tinted clear cover is UL94V-0 Polycarbonate

Measurements (Maximum values*):

- Width: 14 in.
- Height: 16 in.
- Depth: 8 in.
- Item Weight: 7 lbs.
- Shipping Weight: 7 lbs.

Includes

- (1) Internal ABS Mounting Plate
- (1) NEMA 3R Breather Vent (-V ONLY)
- (1) Drain Vent (-V ONLY)
- (4) #10-32 Mounting Plate Screws
- (4) #10 Washers
- (4) #10-32 Lid Screws
- (4) Small Hole Covers
- (1) Large Hole Cover
- (4) Mounting Feet (excluded from -242410)
- (4) 1/4 in. -20 Mounting Feet Screws (4) (excluded from -242410)
- (2) Cord Grips (-V ONLY)
- (1) Installation Instructions







Available Accessories

- [39-POLE-MOUNT-BRACKET](#) - Model Series 1021, 1024, 1026: Pole Mount Kit
- [39-RJ45-BULKHEAD](#) - Bulkhead Modular Pass -Through
- [39-BULKHHD-KIT-RPTNC\(F\)](#) - Pigtail Cable for Antennas on Enclosure Door - RPTNC
- [39-BULKHHD-KIT-RPSMA](#) - Pigtail Cable for Antennas on Enclosure Door - RPSM
- [39-CORD-GRIP](#) - Cable ingress/egress fitting

3D Interactive Models


 [Model Viewer at oberoninc.com](#)

Documentation Links

-  [Spec Sheet](#) - oberoninc.com/index.php?option=com_content&view=article&id=2078&Itemid=399
-  [Installation Instructions](#) - oberoninc.com/images/_Instructions/Oberon_Model_1026-16148-C_Instructions.pdf
-  [Customer Prints](#) - oberoninc.com/images/_Customer_Prints/Oberon_Model_1026-16148-C_Customer_Print.pdf
-  [Customer Prints \(-V\)](#) - oberoninc.com/images/WebDocs/Oberon_Model_1026-XX-XX-V.pdf
-  [App Note - Wireless Coverage FAQ](#) - oberoninc.com/images/WebDocs/Model1025-00_coverage_FAQ.pdf
-  [SECTION 27_21_33 DATA COMMUNICATIONS WIRELESS ACCESS POINTS](#)

https://oberoninc.com/images/WebDocs/SECTION_27_21_33_DATA_COMMUNICATIONS_WIRELESS_ACCESS_POINTS.pdf

Additional Information

 For Oberon product CAD files, contact customer service






Configurations: Model 1026

Please specify configuration when ordering.

1026-	DIMENSIONS (see Configurations)	DOOR STYLE 00 (Opaque) C (Clear)	VENT & DRAIN KIT* V (otherwise leave blank)	*Minimum order quantity of 5 with a 4 week lead time.

Examples:

1026- <u>1084-C</u>	Model 1026 with clear door, 10 x 8 x 4 in. dimensions
1026- <u>12106-00-V</u>	Model 1026 with opaque door, vent & drain kit, 12 x 10 x 6 in. dimensions

SKU	Description	Dimensions
 1026-1084	Polycarbonate NEMA 4 WiFi Gear Box	10 x 8 x 4 in.
 1026-12106	Polycarbonate NEMA 4 WiFi Gear Box	12 x 10 x 6 in.
 1026-14126	Polycarbonate NEMA 4 WiFi Gear Box	14 x 12 x 6 in.
 1026-16148	Polycarbonate NEMA 4 WiFi Gear Box	16 x 14 x 8 in.
 1026-242410	Polycarbonate NEMA 4 WiFi Gear Box	24 x 24 x 10 in.

Images and documents may depict similar models in the product series.