



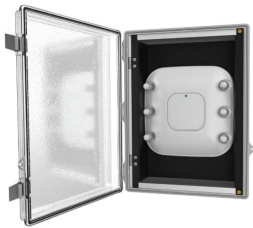
Model 1024-C

15.7 in. Low Profile NEMA-4 Plastic Wi-Fi Access Point Enclosure with Hinged Clear Door

Category: **Skybar**



This compact NEMA 4X Skybar™ enclosure is designed to protect wireless LAN APs with internal or external antennas in challenging indoor/outdoor environments. This rugged polycarbonate enclosure protects the AP from weather, dust, and impacts, and is transparent to wireless signals so APs with body integrated antennas or small detachable antennas may be protected. The enclosure has a hinged door, molded-in padlock hasps for locking, and interior panel for attaching APs. Enclosure is paintable.



Features & Benefits

- Designed for protecting leading vendors' enterprise wireless access points and DAS remotes, inside and outside
- Hinged cover, latchable, lockable

Technical Specifications

- Design: Polycarbonate NEMA AP enclosure designed for wall or mast mounting indoors or outdoors, where secure mounting is required. Large enough for APs with external dipole antennas. Hinged, lockable door
- Performance: Designed to NEMA 1, 2, 4, 4X, 12, and 13, and IEC529-IP66 specifications for indoor/ outdoor wet, dirty, or corrosive environments. UV stabilized for exposure to direct sunlight. Transparent to wireless signals. Temperature rating from -40 to 70°C. Paintable
- Hinged, gasketed door with hasps for padlock
- Internal plastic universal mounting panel
- Construction: UL listed to UL508A (File #E194432). Back-box and cover are light gray UL94-5VA PBT/PC blended plastic
- AP max. operating temperature should be de-rated by 9° C inside the enclosure, when solar loading is not present ([See Oberon application note](#))
- For outdoor installation, the 1024 is a very light grey to reduce solar loading. Painting the 1024 a darker color will increase solar loading. Avoid mounting the 1024 where it is directly exposed to the sun
- Exterior size: 15.7 x 11.7 x 4.8 in. (400 x 297 x 122 mm). Interior dimensions: 14.8 x 10.8 x 4.5 in. (376 x 274 x 114 mm)

Measurements (Maximum values*):

- Width: 11.7 in.
- Height: 15.7 in.
- Depth: 4.8 in.
- Item Weight: 6.3 lbs.
- Shipping Weight: 8 lbs.

Includes

- (1) Unit
- (4) Stainless steel wall mounting brackets
- (2) 1/2" O.D. Nylon spacer
- (1) T-Bar bracket
- (2) #6 x 7/8" screw
- (4) #8 x 3/8" screw
- (4) M5 x 10mm screw
- (1) Interior mounting panel for most vendors' access points
- Installation instructions







Available Accessories

- [39-POLE-MOUNT-BRACKET](#) - Model Series 1021, 1024, 1026: Pole Mount Kit


3D Interactive Models

 [Model Viewer at oberoninc.com](#)

Documentation Links

-  [Spec Sheet](#) - oberoninc.com/index.php?option=com_content&view=article&id=2096&Itemid=399
-  [Installation Instructions](#) - oberoninc.com/images/_Instructions/Oberon_Model_1024-C_Instructions.pdf
-  [Customer Prints](#) - oberoninc.com/images/_Customer_Prints/Oberon_Model_1024-C_Customer_Print.pdf
-  [Weatherproofing Instructions](#) - oberoninc.com/images/WebDocs/Model1024-00_Assembly_w_Cisco_AP.pdf
-  [App Note - Wireless Coverage FAQ](#) - oberoninc.com/images/WebDocs/Model1025-00_coverage_FAQ.pdf
-  [SECTION 27_21_33 DATA COMMUNICATIONS WIRELESS ACCESS POINTS](#)
https://oberoninc.com/images/WebDocs/SECTION_27_21_33_DATA_COMMUNICATIONS_WIRELESS_ACCESS_POINTS.pdf


Additional Information

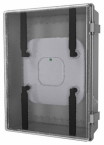
-  For Oberon product CAD files, contact customer service

Configurations: Model 1024

Please specify configuration when ordering.

1024-	
	DOOR
	00 (Solid door) C (Clear door)

SKU	Description
 1024-00	PBT/Polycarbonate NEMA 4 enclosure for AP, with hinged, solid door



1024-C

PBT/Polycarbonate NEMA 4 enclosure for AP, with hinged, clear door

Images and documents may depict similar models in the product series.