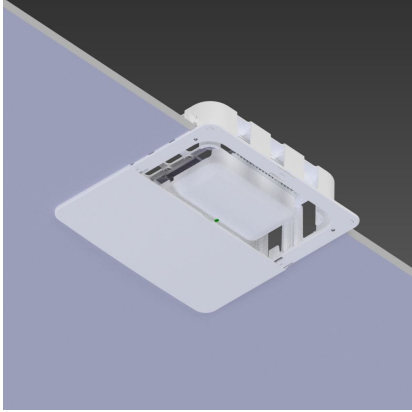




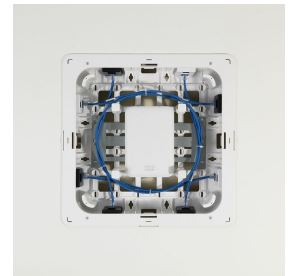
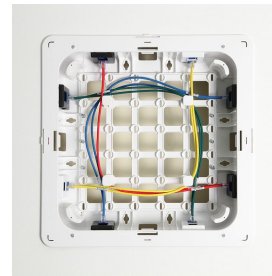
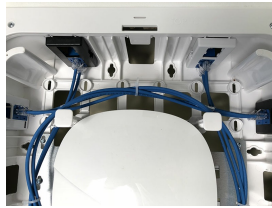
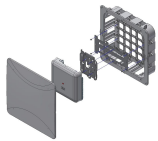
Model 1019-RM

14 in. Recessed Wall and Hard-Lid Ceiling Mounted Plastic Wi-Fi Access Point Enclosure with Low Profile Snap-on Cover

Category: **Envelop**



Oberon's Model 1019 Envelop™ enclosures conceal Wi-Fi and Small Cell APs, Wi-Fi routers, and associated cabling in residence halls, hotels, multiple dwelling units, retail locations and other indoor venues. Recess AP into the wall and conceal with the low profile, paintable, snap-on cover. This rugged UL 94-5VB ABS plastic enclosure is virtually transparent to wireless signals so there is minimal impact on wireless coverage. The 1019 features slots for TIA 569-B compliant furniture faceplate RJ-45 modular jacks, to facilitate cable termination and management.



Features & Benefits

- Recess PoE Wi-Fi and Small cell APs and wireless routers into hard lid ceiling or wall environment
- Use as a discrete in-wall Horizontal Connection Point enclosure for low voltage structured cabling
- Paintable snap-on cover is almost flush to wall
- Easily fastens to drywall using swivel fasteners
- Secures, conceals, and organizes cabling and patch cords from all leading vendors
- All plastic enclosure minimizes RF interference

Technical Specifications

- Designed to conceal and secure PoE APs with integrated or non-detachable antennas. Also designed as a recessed Horizontal Connection Point enclosure for low voltage network cabling
- Performance: Ventilated, paintable, impact resistant, and flame retardant UL 94-5VB PC/ABS plastic enclosure is virtually transparent to wireless signals
- Snap-on cover with concealed attachment points can optionally be screwed on for added security
- Universal T-bar mounting plate for most vendor's APs, mounting features for Cisco APs
- Slots for TIA 569-B compliant furniture faceplate RJ-45 modular jacks
- Cable management features
- Construction: UL 94-5VB Flame retardant PC/ABS plastic. All PC/ABS components are white. 18 gauge galvanized steel AP mounting plate
- Size: Cage (backbox) is 13.5 x 13.5 x 3.7 in. (343 x 343 x 94 mm). Cover is 15.7 x 15.7 in. (400 x 400 mm)

Measurements (Maximum values*):


- Width: 13.5 in.

- Height: 13.5 in.
- Depth: 3.7 in.
- Item Weight: 3.5 lbs.
- Shipping Weight: 4 lbs.

Includes

- (1) Recess box and bezel
- (1) AP Mounting Plate
- (1) Tamper Resistant Snap-on Cover
- (1) Spare Swivel Fasteners
- (6) Removable Cable Management Pegs
- (4) #6 - 19B x 1/4 in. Screws
- (4) #8 - 18A x 1/4 in. Screws
- (4) #4 - 24A x 1-1/2 in. Screws
- Installation instructions


3D Interactive Models

 [Model Viewer at oberoninc.com](https://www.oberoninc.com)

Documentation Links

 [Spec Sheet](https://www.oberoninc.com/index.php?option=com_content&view=article&id=4856&Itemid=399) - oberoninc.com/index.php?option=com_content&view=article&id=4856&Itemid=399

 [Installation Instructions](https://www.oberoninc.com/images/_Instructions/Oberon_Model_1019-RM_Instructions.pdf) - oberoninc.com/images/_Instructions/Oberon_Model_1019-RM_Instructions.pdf

 [Customer Prints](https://www.oberoninc.com/images/_Customer_Prints/Oberon_Model_1019-RM_Customer_Print.pdf) - oberoninc.com/images/_Customer_Prints/Oberon_Model_1019-RM_Customer_Print.pdf

 [SECTION 27_21_33 DATA COMMUNICATIONS WIRELESS ACCESS POINTS](#)

https://www.oberoninc.com/images/WebDocs/SECTION_27_21_33_DATA_COMMUNICATIONS_WIRELESS_ACCESS_POINTS.pdf

Additional Information

 For Oberon product CAD files, contact customer service

Images and documents may depict similar models in the product series.