



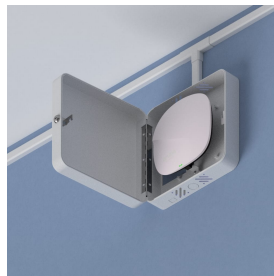
Model 1015-00

11 in. Hi-Bar™ Plastic Wi-Fi Access Point Lock Box with Opaque Door

Category: **Hi-Bar**



Oberon's Model 1015 series Hi-bar™ enclosures secure and protect Wi-Fi and Small Cell APs in residence halls, hotels, retail locations and other indoor venues. This rugged ABS plastic enclosure is virtually transparent to wireless signals so APs with integrated antennas or small detachable antennas may be protected. The box can be mounted directly over the telecommunication outlet, and cable raceway or conduit can be conveniently terminated.



Features & Benefits

- Accommodates most vendors' APs
- Locking, fully-hinged door
- Simplify code, industry directives, policy, and aesthetics compliance

Technical Specifications

- Design: AP enclosure designed to be surface mounted on hard-lid ceilings or walls. Designed to accommodate APs with integrated or non-detachable antennas
- Performance: Ventilated, paintable, impact resistant ABS plastic enclosure is virtually transparent to wireless signals
- Oberon Hi-Bar shaped, locking, fully hinged door, keyed alike
- Universal T-bar for most vendors' APs, mounting features for Cisco APs
- Opening in back allows for placement directly over outlet
- Twist outs in sidewalls for conduit or raceway
- Construction: UL 94-HB Classified ABS plastic. Textured white body and door
- Size: 11.1 x 11.1 x 4.4 in. (282 x 282 x 112 mm)

Measurements (Maximum values*):

- Width: 11.1 in.
- Height: 11.1 in.
- Depth: 4.4 in.
- Item Weight: 3 lbs.
- Shipping Weight: 4 lbs.




Includes

- (1) Unit
- (1) Internal universal access point mounting T-bar bracket
- (2) Keys for lock
- Installation instructions

3D Interactive Models

3D Model Viewer at oberoninc.com

Documentation Links

-  [Spec Sheet](http://oberoninc.com/index.php?option=com_content&view=article&id=1258&Itemid=399) - oberoninc.com/index.php?option=com_content&view=article&id=1258&Itemid=399
-  [Installation Instructions](http://oberoninc.com/images/_Instructions/Oberon_Model_1015-00_Instructions.pdf) - oberoninc.com/images/_Instructions/Oberon_Model_1015-00_Instructions.pdf
-  [Customer Prints](http://oberoninc.com/images/_Customer_Prints/Oberon_Model_1015-00_Customer_Print.pdf) - oberoninc.com/images/_Customer_Prints/Oberon_Model_1015-00_Customer_Print.pdf
-  [App Note - Wireless Coverage FAQ](http://oberoninc.com/images/WebDocs/Application_Note_Wireless_Coverage_FAQ.pdf) - oberoninc.com/images/WebDocs/Application_Note_Wireless_Coverage_FAQ.pdf
-  [SECTION 27_21_33 DATA COMMUNICATIONS WIRELESS ACCESS POINTS](https://oberoninc.com/images/WebDocs/SECTION_27_21_33_DATA_COMMUNICATIONS_WIRELESS_ACCESS_POINTS.pdf)
https://oberoninc.com/images/WebDocs/SECTION_27_21_33_DATA_COMMUNICATIONS_WIRELESS_ACCESS_POINTS.pdf

Additional Information

-  For Oberon product CAD files, contact customer service




Configurations: Model 1015

Please specify configuration when ordering.

1015-	DOOR STYLE	OPTIONAL BRACKET
	00 (Opaque White) C (Frosted Clear)	RAB (Right Angle Bracket) PLATE (hanging conduit or cable mount) (otherwise leave blank)

Examples:

<u>1015-C-RAB</u>	Model 1015 with frosted clear door and right angle bracket
-----------------------------------	--

SKU	Description
 1015-00	Non-metallic lock box, white box and door
 1015-C	Non-metallic lock box, white box, translucent door
 1015-00-RAB	Non-metallic lock box, white box and door, right angle bracket



1015-C-RAB

Non-metallic lock box, white box, translucent door, right angle bracket



1015-00-PLATE

Non-metallic lock box, white box and door, with Oberon P/N 39-1015-PLATE metal plate for hanging 1015-00 on Y-toggles or conduit



1015-C-PLATE

Non-metallic lock box, white box, translucent door, with Oberon P/N 39-1015-PLATE metal plate for hanging 1015-00 on Y-toggles or conduit

Images and documents may depict similar models in the product series.