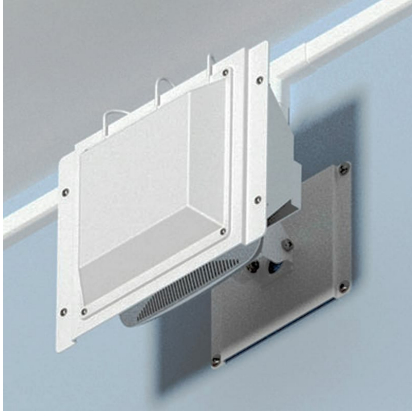


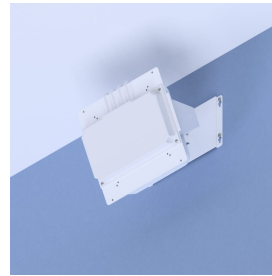
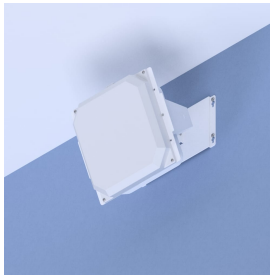
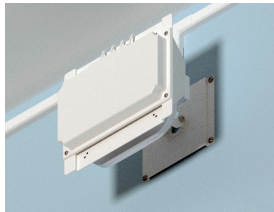
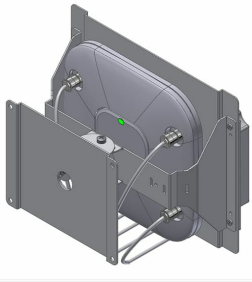


## Model 1013-00 Dual-Axis Articulating Wi-Fi Access Point & Antenna Wall Mount

Category: **Hi-Bar**



2-axis Articulating wall Hi-Bar™ mount for most manufacturers' APs and directive (or patch) antennas on pillars and walls. AP and directional antenna attach to this mount, and the antenna can be pointed in any direction to achieve desired wireless coverage. Wall mount bracket can be placed directly over data outlet. Designed for Cisco and Aruba Networks APs and directive antenna, and many other vendors' APs. Ideal for classrooms, auditoriums, and stadiums where directional coverage is required.



### Features & Benefits

- Swivels on two axes to provide down-tilt and azimuth coverage desired
- Designed for mounting most vendors enterprise wireless access points with external antennas on the wall or ceiling
- Designed for high-density WiFi installations
- Can be mounted over telecommunications outlet

### Technical Specifications

- Design: 2-Axis articulating mount for securing APs and directional antennas on walls. Designed to allow directional antenna to articulate in both azimuth and elevation. Works with most vendors' APs and antennas
- Performance: +/- 45° antenna pointing, up and down, right and left
- Includes T-bar bracket for attaching most vendors' APs
- Includes universal antenna mounting plate
- Construction: 14 ga. white powder-coated steel
- Size: 9 x 11 x 6.25 in. (229 x 280 x 159 mm)


### Measurements (Maximum values\*):

- Width: 11.7 in.
- Height: 10 in.
- Depth: 8 in.
- Item Weight: 5 lbs.
- Shipping Weight: 6 lbs.





### Includes

- (4) 8-32 x 1/4 in. screws
- (1) Vanity Cover
- (2) 6-32 x 1/4 in. screws
- (1) T-bar
- (2) Wire ties
- Installation instructions

### 3D Interactive Models

 [Model Viewer at oberoninc.com](#)

### Documentation Links

-  [Spec Sheet](#) - oberoninc.com/index.php?option=com\_content&view=article&id=1303&Itemid=399
-  [Installation Instructions](#) - oberoninc.com/images/\_Instructions/Oberon\_Model\_1013-00\_Instructions.pdf
-  [Customer Prints](#) - oberoninc.com/images/\_Customer\_Prints/Oberon\_Model\_1013-00\_Customer\_Print.pdf
-  [SECTION 27\\_21\\_33 DATA COMMUNICATIONS WIRELESS ACCESS POINTS](#)  
[https://oberoninc.com/images/WebDocs/SECTION\\_27\\_21\\_33\\_DATA\\_COMMUNICATIONS\\_WIRELESS\\_ACCESS\\_POINTS.pdf](https://oberoninc.com/images/WebDocs/SECTION_27_21_33_DATA_COMMUNICATIONS_WIRELESS_ACCESS_POINTS.pdf)



### Additional Information

 For Oberon product CAD files, contact customer service

### Configurations: Model 1013

Please specify configuration when ordering.

|              |                      |
|--------------|----------------------|
| <b>1013-</b> | <b>COVER</b>         |
|              | <b>00</b> (No Cover) |
|              | <b>COVER</b> (Cover) |

| SKU  | Description                                       |
|--|---|
| <br>1013-00    | 2-Axis Articulating AP/Antenna Mount              |
| <br>1013-COVER | 2-Axis Articulating AP/Antenna Mount: White cover |

*Images and documents may depict similar models in the product series.*