



## Model 1006-AP325

### Right-Angle Wi-Fi Access Point Wall Bracket for Aruba AP325

Category: **H-Plane**



Many Wi-Fi and Small Cell AP manufacturers recommend that their APs be mounted in a horizontal orientation for optimal wireless coverage. In locations where the APs are to be mounted on the wall, Oberon's 1006 series H-Plane™ right angle wall brackets permit the AP to be mounted in the preferred horizontal orientation. With the 1006 series, the AP is partially recessed into the right-angle bracket, exposing only the antenna face of the AP, providing for the ideal combination of aesthetics and wireless coverage. Available for leading AP makes and models.

*Patent Pending*

*NOTE: The Aruba AP-325 (only) has a BLE (Bluetooth low energy) antenna on the back side of the AP. This BLE antenna may not provide the desired coverage when mounted in the Oberon Model 1046-AP325 enclosure. If you intend to use BLE services with the Aruba AP-325 AP in an Oberon product, please contact your Oberon customer service representative for an appropriate solution.*



#### Features & Benefits

- Conveniently and aesthetically install APs from leading vendors on walls
- Enables APs to be mounted in preferred horizontal orientation
- AP is partially recessed into bracket, providing aesthetic appearance
- Can be mounted directly over telecommunications outlet
- AP installs without lose hardware

#### Technical Specifications

- Design: Right-angle mounting bracket for securing APs on walls. Designed to mount the AP in the preferred horizontal orientation. Designs available for leading AP makes and models (see Styles table)
- AP is partially recessed into bracket, providing aesthetic appearance
- AP can be secured using manufacturer's locking features
- Construction: 12 ga. white powder-coated steel
- Size: See Styles Table

#### Measurements (Maximum values\*):

- Width: 10.5 in.
- Height: 10.25 in.
- Depth: 2.5 in.
- Item Weight: 4 lbs.
- Shipping Weight: 6 lbs.

#### Includes





- (1) Right-Angle Bracket
- (1) AP mounting plate
- (2) hollow tip wall anchors

- (2) white plastic bolt head covers
- (1) Installation instructions

### 3D Interactive Models

**3D** Model Viewer at [oberoninc.com](http://oberoninc.com)

### Documentation Links

-  [Spec Sheet](http://oberoninc.com/index.php?option=com_content&view=article&id=2545&Itemid=399) - oberoninc.com/index.php?option=com\_content&view=article&id=2545&Itemid=399
-  [Installation Instructions](http://oberoninc.com/images/_Instructions/Oberon_Model_1006-AP325_Instructions.pdf) - oberoninc.com/images/\_Instructions/Oberon\_Model\_1006-AP325\_Instructions.pdf
-  [Customer Prints](http://oberoninc.com/images/_Customer_Prints/Oberon_Model_1006-AP325_Customer_Print.pdf) - oberoninc.com/images/\_Customer\_Prints/Oberon\_Model\_1006-AP325\_Customer\_Print.pdf
-  [SECTION 27\\_21\\_33 DATA COMMUNICATIONS WIRELESS ACCESS POINTS](https://oberoninc.com/images/WebDocs/SECTION_27_21_33_DATA_COMMUNICATIONS_WIRELESS_ACCESS_POINTS.pdf)  
[https://oberoninc.com/images/WebDocs/SECTION\\_27\\_21\\_33\\_DATA\\_COMMUNICATIONS\\_WIRELESS\\_ACCESS\\_POINTS.pdf](https://oberoninc.com/images/WebDocs/SECTION_27_21_33_DATA_COMMUNICATIONS_WIRELESS_ACCESS_POINTS.pdf)






### Additional Information

-  For Oberon product CAD files, contact customer service

### Configurations: Model 1006

Please specify style when ordering.

<b>1006-</b>	
	<b>AP STYLE</b>
	(See Configurations)

SKU	Description	Style Size
 1006-AP225	Aruba Networks AP225	10.5 x 10.25 x 2.5 in.
 1006-AP305	Aruba Networks AP305	8.6 x 8.3 x 2.5 in.
 1006-AP315	Aruba Networks AP315	10.5 x 10.25 x 2.5 in.
 1006-AP325	Aruba Networks AP325	10.5 x 10.25 x 2.5 in.
 1006-AP335	Aruba Networks AP335, AP345	11.61 x 11 x 2.5 in.



1006-CCOAP

Cisco 2600, 2700, 3500, 3600, 3700 Series APs

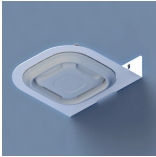
11 x 11 x 2.5 in.



1006-CCOAP3800

Cisco 1830, 1850, 2800, 3800 Series APs

11 x 11 x 2.5 in.



1006-HLA

Cisco AP with hyperlocation antenna

15 x 15 x 4 in.



1006-EXT3935

Extreme Networks APs

11 x 11 x 2.5 in.



1006-UBI

Ubiquiti UniFi APs

8.3 x 6.9 x 2.5 in.

*Images and documents may depict similar models in the product series.*