



RAYCHEM ELB-15/28 SERIES

600/900 AMP 15/28 KV CLASS T-BODY ELBOW CONNECTOR

KEY FEATURES

- Peroxide cured EPDM rubber ensures low tension set and high dielectric strength
- 100% factory production tested for partial discharge and AC Hipot per IEEE 386
- Optional capacitive test point provided on elbow
- Fits 15/28 kV cables up to 1250 kcmil
- 900 A capability is available

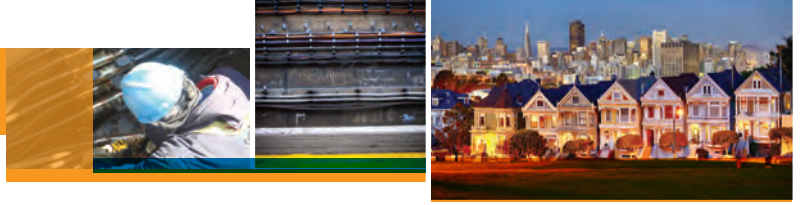
TE Connectivity's (TE) ELB-15/28 elbows are designed to terminate underground cables to high-voltage apparatus such as transformers and switchgear. They are fully shielded and fully submersible and meet the requirements of IEEE Standard 386. They are interchangeable with other manufacturers' products that conform with this industry standard.

Molded semiconducting shield provides ground shield continuity per the requirements of IEEE 592. Meets IEEE 386-2006 specification requirements.

They are designed for use on extruded (XLPE or EPR) solid dielectric cable. The conductor range is from 1/0 AWG to 1250 kcmil for aluminum or copper conductors with insulation diameters from .640" to 1.965". The ELB-15/28-610 and ELB-15/28-910 elbow has a capacitive test point molded into the elbow body which provides a means of sensing voltage and provides an attachment point for test point fault indicators. 900 A ratings can be achieved by ordering the kit with a copper ShearBolt terminal.

Customers can count on consistent, high quality products, driven by TE's proven innovation and backed by our extraordinary customer support.

RAYCHEM ELB-15/28 SERIES



Optional ShearBolt Terminal

As an option, the elbow can also be ordered with TE Connectivity's new line of Aluminum or Copper ShearBolt Terminals. These are range taking mechanical connectors that will accommodate a conductor range from #2 compact to 1250 kcmil stranded, Class B.

The ShearBolt Terminal design incorporates shear head bolts, which ensures that the correct torque is applied to each bolt and consequently the optimal contact force is generated to minimize connection resistance. Eliminating the need for crimp tooling and dies, they are therefore ideal when installation space is confined.

Ordering Formula Example:

The part number for a 15/28 kV Elbow, 600 A with test point, an insulation OD of 1.7", and 1000 kcmil stranded cable is ELB-15/28-610K1000. (Or with AL ShearBolt ELB-15/28-610K-A3)

ELB-12/28-	1	2	3
35 kV Elbow	600 AMP with Test point	1.7" Insulation OD	1000 kcmil Stranded Cond.
= ELB-15/28-	610	R	1000

Ordering Notes:

- To include a sealing kit, add "-ESA" suffix for heat-shrinkable and "-CES" suffix for cold applied closure. "-GES" suffix for cold applied GelWrap ES closure.
- If using copper tape shield cable, sealing/grounding ELB-35-600-GRDx (heat-shrink) or ELB-600-CES-GRDX (cold applied), (x = 1, 2, or 3) is required and ordered separately.

ELB Kit Contents:

Elbow, Insulating Plug*, Cable Adapter, Stud*, Connector*, Silicone Lubricant, Installation Instruction, Jacket Seal (optional)

* When 900 Series is specified, kit will include copper insulating plug, copper stud, and either a copper-top connector or copper ShearBolt.

Related Test Reports:

EDR-5482, EDR-5476, EDR-5502, EDR-5503

te.com/energy

©2009 - 2012, 2014, 2015, 2016 TE Connectivity Ltd. family of companies. All Rights Reserved. EPP-2656-DDS-5/16-EN-AMS-ELB-15-28-Raychem E352

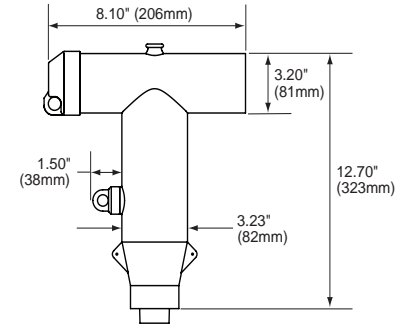
Raychem, TE, TE Connectivity and TE connectivity (logo) are trademarks. Other logos, product and/or company names might be trademarks of their respective owners. While TE has made every reasonable effort to ensure the accuracy of the information in this brochure, TE does not guarantee that it is error-free, nor does TE make any other representation, warranty or guarantee that the information is accurate, correct, reliable or current. TE reserves the right to make any adjustments to the information contained herein at any time without notice. TE expressly disclaims all implied warranties regarding the information contained herein, including, but not limited to, any implied warranties of merchantability or fitness for a particular purpose. The dimensions in this catalog are for reference purposes only and are subject to change without notice. Specifications are subject to change without notice. Consult TE for the latest dimensions and design specifications.

Ratings

Voltage Class 15/28 kV
Max Rating Phase-to-Ground 16.2 kV
AC 1 Minute Withstand 45 kV
DC 15 Minute Withstand 88 kV
BIL and Full Wave Crest 140 kV
Minimum Corona Level 21.5 kV (3pC)
Continuous 600 A rms
24 Hour Overload 1,000 A rms
Momentary:
25,000 A symmetrical 10 cycles
10,000 A symmetrical 3.00 sec

100% Production Test

Minimum Corona Level 19 kV (3pC)
AC 1 Minute Withstand 40 kV



Ordering Formula

ELB-15/28-	1	2	3
1	Current Rating Test Point Code	2	Cable Insulator O.D. Range
600 = 600 AMP WITHOUT test point		Inches	mm
610 = 600 AMP WITH test point		A	.640 - .760 16.3 - 19.3
900 = 900 AMP WITHOUT test point		B	.720 - .845 18.3 - 21.5
910 = 900 AMP WITH test point		C	.785 - .970 19.9 - 24.6
3	Compression Lugs Conductor Size (Aluminum or Copper)	D	.910 - 1.065 23.1 - 27.1
Code	Str/Comp Compact Solid	E	.980 - 1.140 24.9 - 29.0
1	1 1/0 1/0	F	1.080 - 1.280 27.4 - 32.5
2	2 2 2	G	1.220 - 1.420 31.0 - 36.1
10	1/0 2/0 2/0	H	1.360 - 1.560 34.5 - 39.6
20	2/0 3/0 3/0	J	1.480 - 1.700 37.6 - 43.2
30	3/0 4/0 4/0	K	1.640 - 1.840 41.7 - 46.7
40	4/0 250 —	L	1.780 - 1.965 45.2 - 49.9
250	250 300 —	Copper ShearBolt & Conductor Size	
300	300 350 —	Compression, Compact, Strand	
350	350 400 —	-C1	2 - 4/0
400	400 450/500 —	-C2	2/0 - 500
450	450 500/550 —	-C3	300 - 750
500	500 600 —	-C4	500 - 1000
550	550 650 —	-C5	1000 - 1250
600	600 700 —	Aluminum ShearBolt & Conductor Size	
650	650 750/800 —	Compression, Compact, Strand	
750	— 900 —	-A1	2 - 350
800	800 900 —	-A2	350 - 750
900	900 1000 —	-A3	600 - 1000
1000	1000 — —	-A4	1000 - 1250
1100	1100 — —		
1250	1250 — —		

FOR MORE INFORMATION: TE Technical Support Centers

USA:	+ 1 800 327 6996
France:	+ 33 380 583 200
UK:	+ 44 0870 870 7500
Germany:	+ 49 896 089 903
Spain:	+ 34 916 630 400
Italy:	+ 39 333 250 0915
Benelux:	+ 32 16 351 731
Canada:	+ 1 (905) 475-6222
Mexico:	+ 52 (0) 55-1106-0800
Latin/S. America:	+ 54 (0) 11-4733-2200
China:	+ 86 (0) 400-820-6015