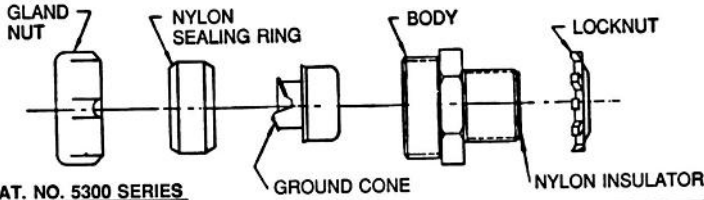
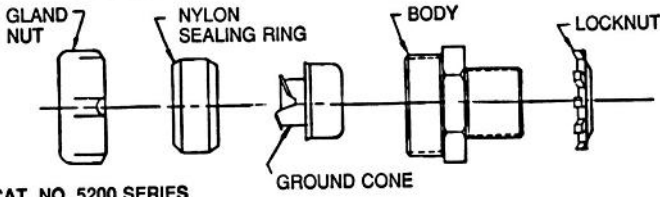


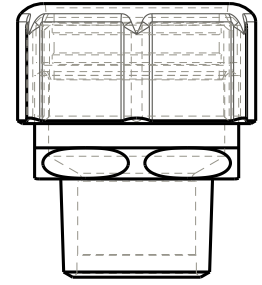
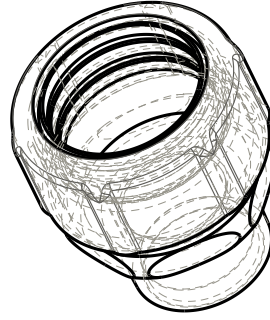
# T&B Liquidtight Fittings



CAT. NO. 5300 SERIES



CAT. NO. 5200 SERIES




COMPONENT PARTS 053-71814- PER TABLE\*\*  
 \*\*053-71814-2 PART NO. FOR 1/2 GLAND

SIZE	CAT NO. COMPLETE	GLAND	SEALING RING	GROUND CONE	BODY	THROAT INSULATOR	LOCKNUT
3/8	5230	-141	-131	-121	-51		-61
3/8	5231	-141	-131	-121	-51		-61
	5331				-41	-372	
1/2	5232	-2	-132	-122	-52		-62
	5332				-42	-372	
3/4	5233	-3	-133	-123	-53		-63
	5333				-43	-373	
1	5234	-144	-134	-124	-54		-64
	5334				-44	-374	
1-1/4	5235	-5	-135	-125	-55		-65
	5335				-45	-375	
1-1/2	5236	-6	-136	-126	-56		-66
	5336				-46	-76	
2	5237	-7	-137	-127	-57		-67
	5337				-47	-77	
2-1/2	5238	-8	-28	-128	-58		-68
	5338				-48	-78	
3	5239	-9	-29	-129	-59		-69
	5339				-49	-79	
4	5240	-10	-30	-130	-60		-70
	5340				-50	-80	

STANDARD FINISH: ZINC PLATE

NOTE: FOR ORDERING COMPLETE DURA-PLATE FITTINGS FINISH THE PREFIX CAT. NO. WITH NUMBERS 040-. FOR ORDERING DURA-PLATE FINISH COMPONENTS PREFIX PART NUMBER WITHOUT 053 WITH 040-. EXAMPLE: 040-71814-2 PART NUMBER FOR 1/2 INCH GLAND.

GENERAL NOTES		 A Member of the ABB Group	
1. ALL DIMENSIONS ARE FOR REFERENCE ONLY. 2. DIMENSIONS IN BRACKETS [ ] ARE IN METRIC UNITS.			
REVISIONS		DESCRIPTION:	
** SEE ERN (****) FOR APPROVAL SIGNATURES & RELEASE DATE. PROJECT NO: ****		<b>LIQUIDTIGHT FLEXIBLE METAL CONDUIT CONNECTOR</b>	
ORIGINAL PROJECT NO / ( ERN NO )		SHEET NO:	REV. NO:
RM400840 / ( 2016670 )		1 OF 1	**
DRAWING NO:		DRAWING NO:	
		WSD-001535	