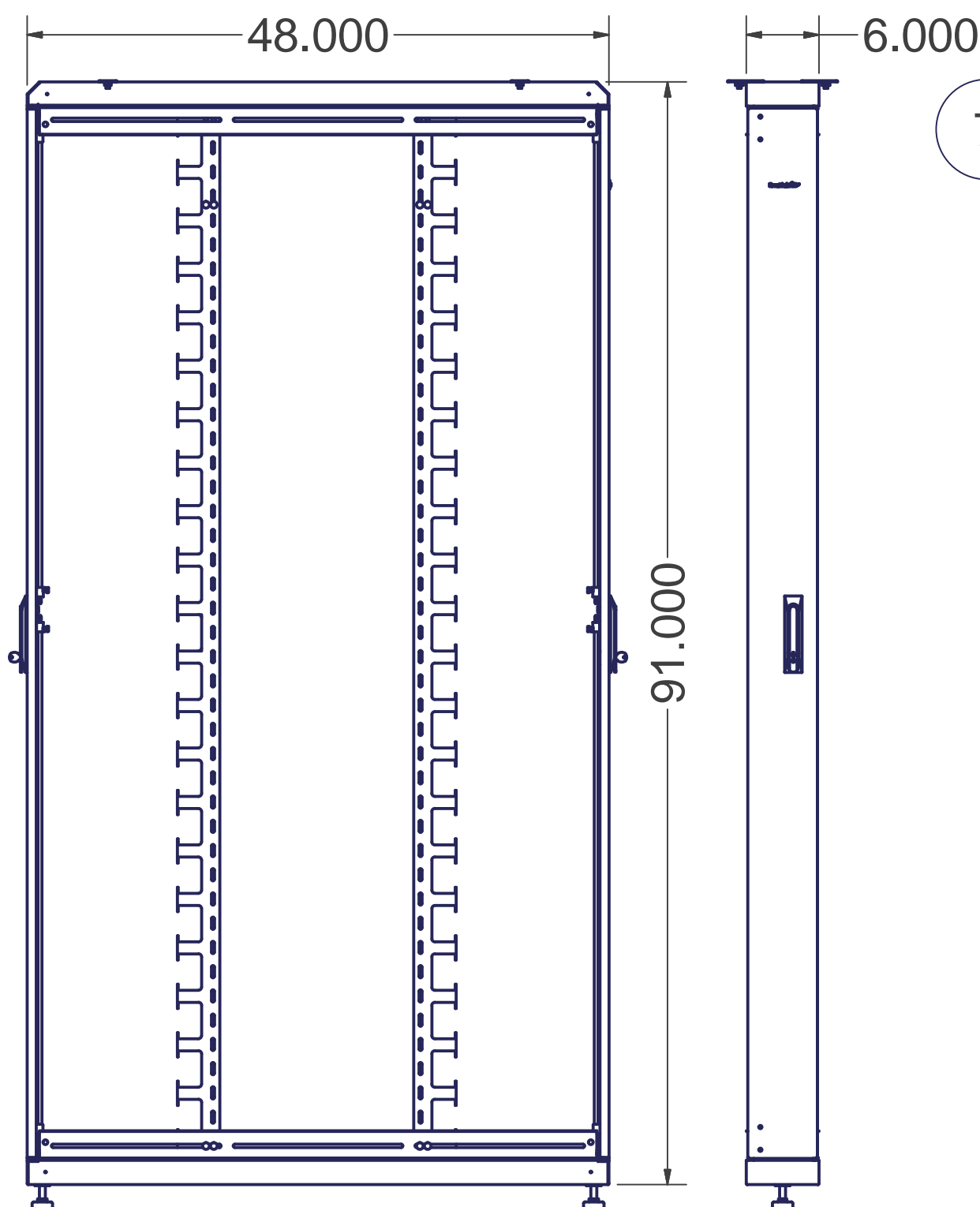
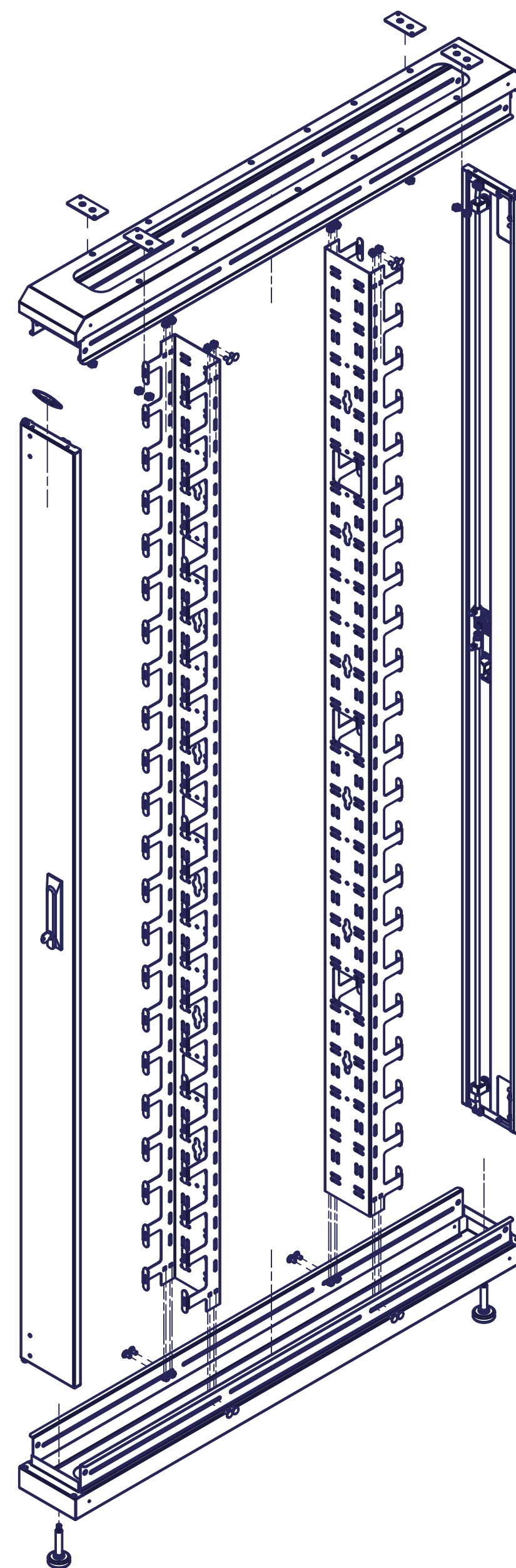
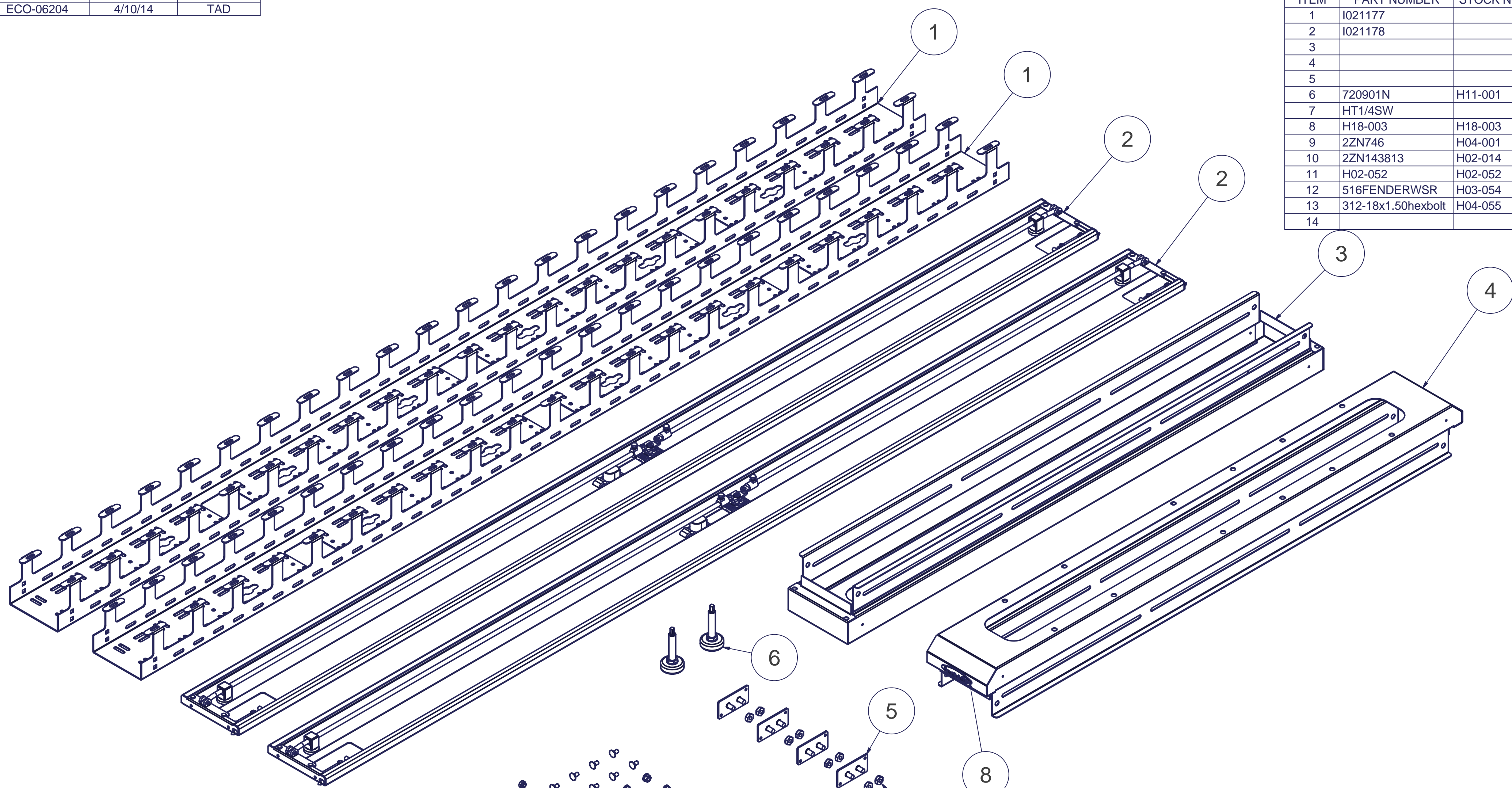



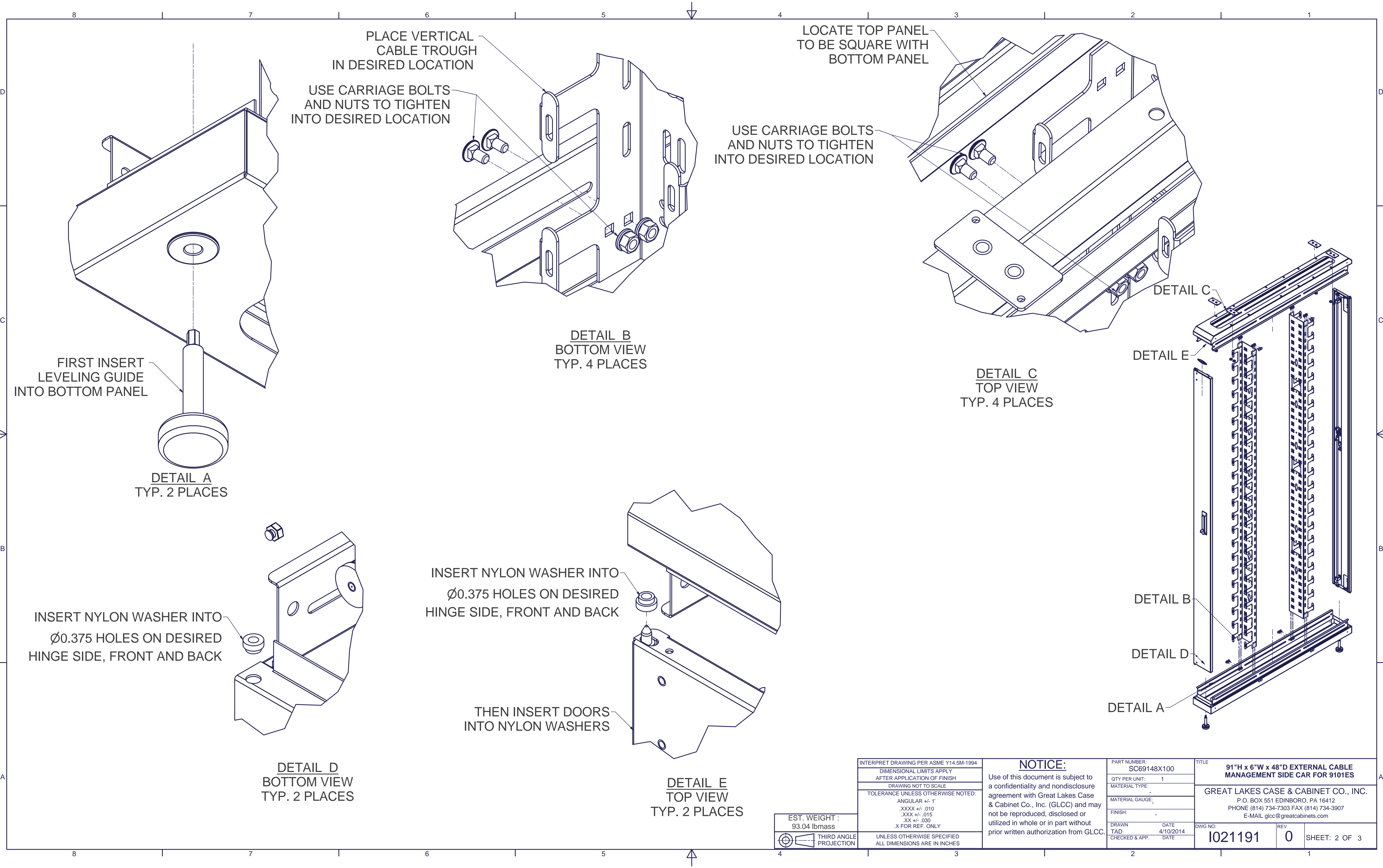
8			
REVISION HISTORY			
REV	DESCRIPTION	DATE	APPROVED
0	ECO-06204	4/10/14	TAD

		3		2		1	
		Bill of Material					
ITEM	PART NUMBER	STOCK NUMBER	QTY	DESCRIPTION		FILE NAME	REV
1	1021177		2	4.906"W x 87.434"H VERTICAL RAIL 6"W SIDE CAR		1021177.ipt	0
2	1021178		2	DOOR FOR 6"W X 91"H SIDE CAR - ASSEMBLY		1021178.iam	0
3			1	BOTTOM FOR 6"W x 48"D SIDE CAR - WELDMENT		1015813.iam	1
4			1	TOP FOR 6"W x 48"D SIDE CAR - WELDMENT		1015810.iam	1
5			4	SIDE CAR CONNECTOR		1015736.iam	0
6	720901N	H11-001	2	2 1/2" LEVELING FOOT, 1/2-13 THDS		720901N.ipt	-
7	HT1/4SW		4	NYLON SHOULDER WASHER - BB FRAME		HT14SW.ipt	-
8	H18-003	H18-003	2	GLCC NAME PLATE, AL., 3" x .75" w/ "3MLSE9495" ADHESIVE, LaFrance Corp.		H18-003.ipt	-
9	22N746	H04-001	16	1/4-20 X 1/2"LG. CARRIAGE BOLT - ILS		22N746.ipt	-
10	22N143813	H02-014	16	1/4-20 HEX NUT w/SERRATED FLANGED LOCK NUT - ILS		22N143813.ipt	-
11	H02-052	H02-052	16	5/16-18 HEX FLANGE SERRATED LOCKNUT ZINC RoHS (5/16-18HXNUT)		H02-052.ipt	-
12	516FENDERWSR	H03-054	16	5/16" - 1-1/4"OD ZINC PLATED FENDER WASHER		516FENDERWSR.ipt	-
13	312-18x1.50hexbolt	H04-055	8	BOLT, 5/16"-18 X 1.5" HEX HEAD CAP SCREW, ZINC PLATED		312-18x1.50hexbolt.ipt	-
14			1	COPY OF THIS DRAWING (1021191)			




- SPECIAL NOTES:**
- 1) INSTALL DOME LABEL ONTO TOP PANEL, FRONT AND REAR, BEFORE SHIPPING.
 - 2) BAG ALL EXTRA HARDWARE AND SHIP WITH PARTS.
 - 3) BAG ALL COMPONENTS AND SHIP AS KIT.
 - 4) REFER TO PURCHASE ORDER SPECIAL INSTRUCTIONS MAY APPLY.

INTERPRET DRAWING PER ASME Y14.5M-1994		<div>NOTICE:</div> <p>Use of this document is subject to a confidentiality and nondisclosure agreement with Great Lakes Case & Cabinet Co., Inc. (GLCC) and may not be reproduced, disclosed or utilized in whole or in part without prior written authorization from GLCC.</p>	PART NUMBER: SC69148X100		TITLE <div>91"H x 6"W x 48"D EXTERNAL CABLE MANAGEMENT SIDE CAR FOR 9101ES</div>	
DIMENSIONAL LIMITS APPLY AFTER APPLICATION OF FINISH			QTY PER UNIT: 1			
DRAWING NOT TO SCALE			MATERIAL TYPE: -		GREAT LAKES CASE & CABINET CO., INC. P.O. BOX 551 EDINBORO, PA 16412 PHONE (814) 734-7303 FAX (814) 734-3907 E-MAIL glcc@greatcabinets.com	
TOLERANCE UNLESS OTHERWISE NOTED:			MATERIAL GAUGE: -			
ANGULAR +/- .1" .XXXX +/- .010 .XXX +/- .015 .XX +/- .030 .X FOR REF. ONLY			FINISH: -			
EST. WEIGHT : 93.04 lbmass		DRAWN DATE TAD 4/10/2014 CHECKED & APP. DATE		DWG NO: 1021191		
	THIRD ANGLE PROJECTION	UNLESS OTHERWISE SPECIFIED ALL DIMENSIONS ARE IN INCHES		REV 0		
				SHEET: 1 OF 3		



EST. WEIGHT :
93.04 lbmass

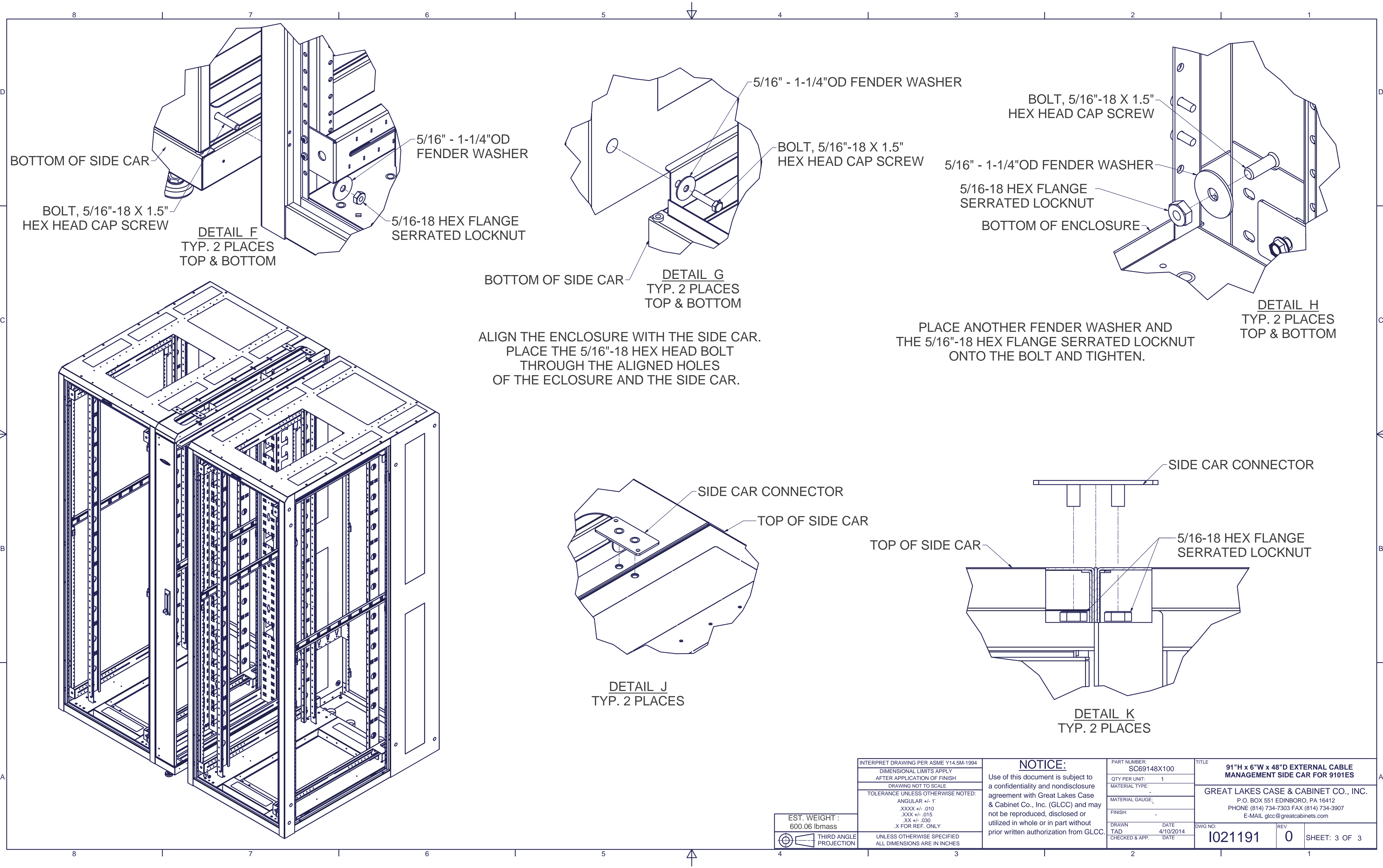
 THIRD ANGLE
PROJECTION

INTERPRET DRAWING PER ASME Y14.5M-1994
DIMENSIONAL LIMITS APPLY AFTER APPLICATION OF FINISH
DRAWING NOT TO SCALE
TOLERANCE UNLESS OTHERWISE NOTED:
ANGULAR +/- .1°
.XXXX +/- .010
.XXX +/- .015
.XX +/- .030
.X FOR REF. ONLY
UNLESS OTHERWISE SPECIFIED ALL DIMENSIONS ARE IN INCHES

NOTICE:
Use of this document is subject to a confidentiality and nondisclosure agreement with Great Lakes Case & Cabinet Co., Inc. (GLCC) and may not be reproduced, disclosed or utilized in whole or in part without prior written authorization from GLCC.

PART NUMBER: SC69148X100	
QTY PER UNIT:	1
MATERIAL TYPE:	-
MATERIAL GAUGE:	-
FINISH:	-
DRAWN	DATE
TAD	4/10/2014
CHECKED & APP.	DATE

TITLE		
91"H x 6"W x 48"D EXTERNAL CABLE MANAGEMENT SIDE CAR FOR 9101ES		
GREAT LAKES CASE & CABINET CO., INC. P.O. BOX 551 EDINBORO, PA 16412 PHONE (814) 734-7303 FAX (814) 734-3907 E-MAIL glccc@greatcabinets.com		
DWG NO:	REV	
1021191	0	SHEET: 2 OF 3



BOTTOM OF SIDE CAR

BOLT, 5/16"-18 X 1.5"
HEX HEAD CAP SCREW

DETAIL F
TYP. 2 PLACES
TOP & BOTTOM

5/16" - 1-1/4"OD FENDER WASHER

5/16-18 HEX FLANGE
SERRATED LOCKNUT

BOTTOM OF SIDE CAR

DETAIL G
TYP. 2 PLACES
TOP & BOTTOM

ALIGN THE ENCLOSURE WITH THE SIDE CAR.
PLACE THE 5/16"-18 HEX HEAD BOLT
THROUGH THE ALIGNED HOLES
OF THE ECLOSURE AND THE SIDE CAR.

5/16" - 1-1/4"OD FENDER WASHER

BOLT, 5/16"-18 X 1.5"
HEX HEAD CAP SCREW

5/16" - 1-1/4"OD FENDER WASHER

5/16-18 HEX FLANGE
SERRATED LOCKNUT

BOTTOM OF ENCLOSURE

BOLT, 5/16"-18 X 1.5"
HEX HEAD CAP SCREW

DETAIL H
TYP. 2 PLACES
TOP & BOTTOM

PLACE ANOTHER FENDER WASHER AND
THE 5/16"-18 HEX FLANGE SERRATED LOCKNUT
ONTO THE BOLT AND TIGHTEN.

SIDE CAR CONNECTOR

TOP OF SIDE CAR

DETAIL J
TYP. 2 PLACES

TOP OF SIDE CAR

SIDE CAR CONNECTOR

5/16-18 HEX FLANGE
SERRATED LOCKNUT

DETAIL K
TYP. 2 PLACES

EST. WEIGHT :
600.06 lbmass

THIRD ANGLE
PROJECTION

INTERPRET DRAWING PER ASME Y14.5M-1994
DIMENSIONAL LIMITS APPLY AFTER APPLICATION OF FINISH
DRAWING NOT TO SCALE
TOLERANCE UNLESS OTHERWISE NOTED:
ANGULAR +/- 1°
.XXXX +/- .010
.XXX +/- .015
.XX +/- .030
.X FOR REF. ONLY
UNLESS OTHERWISE SPECIFIED ALL DIMENSIONS ARE IN INCHES

NOTICE:

Use of this document is subject to a confidentiality and nondisclosure agreement with Great Lakes Case & Cabinet Co., Inc. (GLCC) and may not be reproduced, disclosed or utilized in whole or in part without prior written authorization from GLCC.

PART NUMBER: SC69148X100
QTY PER UNIT: 1
MATERIAL TYPE: -
MATERIAL GAUGE: -
FINISH: -
DRAWN TAD
CHECKED & APP. DATE

TITLE 91"H x 6"W x 48"D EXTERNAL CABLE MANAGEMENT SIDE CAR FOR 9101ES
GREAT LAKES CASE & CABINET CO., INC. P.O. BOX 551 EDINBORO, PA 16412 PHONE (814) 734-7303 FAX (814) 734-3907 E-MAIL glcc@greatcabinets.com
DWG NO: 1021191
REV 0
SHEET: 3 OF 3