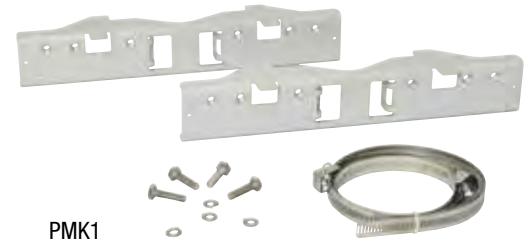


# PMK1

## Outdoor Pole Mount Kit

### Description

Altronix PMK1 outdoor pole mount kit is designed to simplify overall installation of Altronix WP1, WP3, and WP4 NEMA rated enclosures. It can be mounted to any 2" - 8" (diameter) pole or 5" square pole.



### Specifications

#### Features

- Accommodates 2" - 8" (diameter) or 5" square poles.
- Kit includes:
  - Two (2) powder coated steel mount brackets.
  - Four (4) stainless steel bolts.
  - Four (4) stainless steel lock washers.
  - Two (2) wormgear quick release straps.

#### Physical and Environmental

##### Bracket Dimensions (H x W x D)

1.96" x 12" x 2.25" (49.78mm x 304.8mm x 57.15mm).

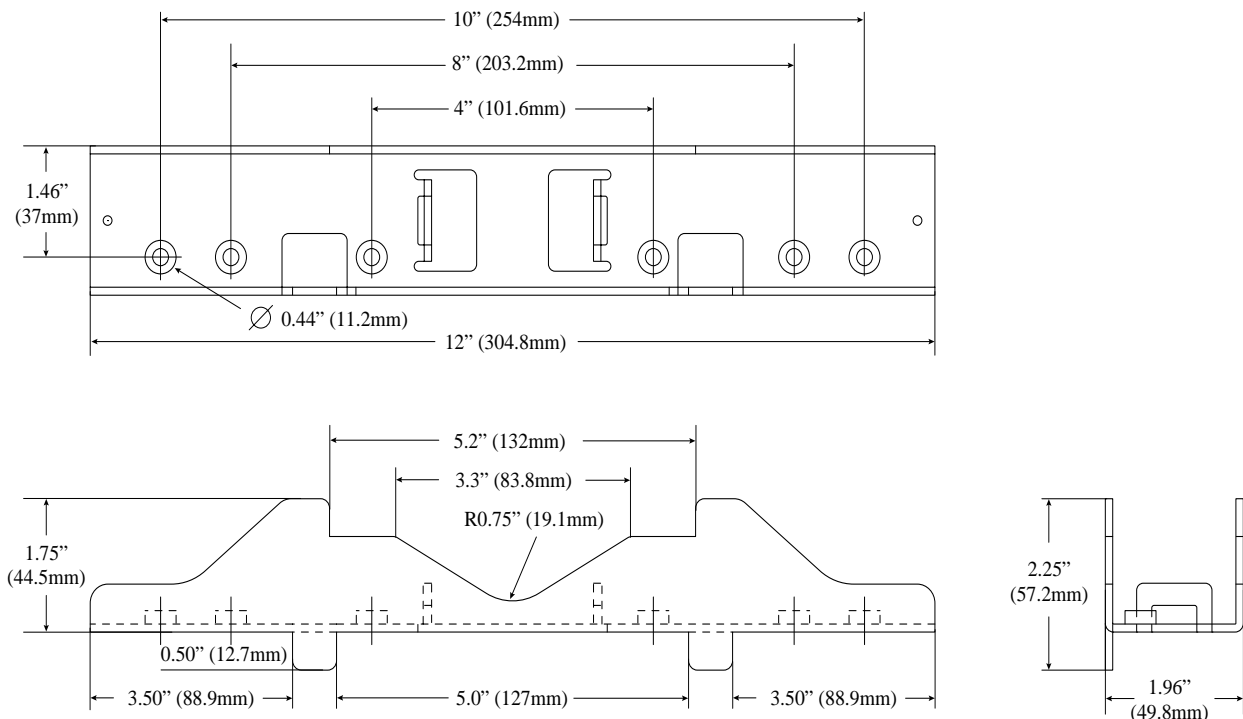
**Product Weight** 2.85 lbs. (1.3 kg).

**Shipping Weight** 3.2 lbs. (1.45 kg).

### Dimensions and Drawing




#### Dimensions (H x W x D approximate)

1.96" x 12" x 2.25" (49.78mm x 304.8mm x 57.15mm)



## PMK1 Outdoor Pole Mount Kit

### Compatible Altronix Outdoor Enclosures and Products

Altronix Model	Photo	Description	Dimensions	Altronix Products
WP1		UL Listed, NEMA 4/IP 65 outdoor enclosure. 16 GA steel.	12" x 8" x 6" (304.8mm x 203.2mm x 152.4mm)	<ul style="list-style-type: none"> <li>- All <b>WPTV</b> outdoor power supplies.</li> <li>- <b>LPS3WP</b> and <b>LPS5WP</b> outdoor linear power supplies.</li> </ul>
WP3		UL Listed, NEMA 4/4X, IP66-11 outdoor enclosure. Lightweight molded fiberglass reinforced polyester.	13.3" x 11.3" x 5.6" (338.1mm x 287.3mm x 142mm)	<ul style="list-style-type: none"> <li>- All <b>WayPoint</b> outdoor power supplies.</li> <li>- <b>NetWay Spectrum</b> Ethernet over Fiber PoE+ hardened switches: <ul style="list-style-type: none"> <li>- NetWay4EWP and NetWay4EWPn;</li> <li>- NetWaySP3WP and NetWaySP3WPN;</li> <li>- NetWaySP4WP and NetWaySP4WPN;</li> <li>- NetWaySP8WP and NetWaySP8WPN.</li> </ul> </li> </ul>
WP4		UL Listed, NEMA 4/4X, IP66-11 outdoor enclosure. Lightweight molded fiberglass reinforced polyester.	9.32" x 7.32" x 4.92" (236.7mm x 185.9mm x 125mm)	<ul style="list-style-type: none"> <li>- <b>eBridge200WPM(H)</b> - outdoor managed two port transceiver.</li> <li>- <b>NetWay1DWP(H)</b> - outdoor single port Hi-PoE injector.</li> </ul>