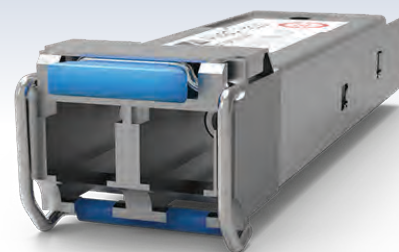


# SP10 Series

## 10 Gigabit Small Form-Factor Pluggable Modules

The Allied Telesis SP10 Series offers a wide variety of 10 Gigabit Ethernet connectivity options for data center, enterprise and service provider transport applications. These industry-standard hot-swappable devices simply plug into the Ethernet SFP+ port on all SFP+-compatible devices. Configuration can be optimized to meet a wide variety of distance and service requirements.



### Compatibility

Allied Telesis SP10 Series 10 Gigabit SFP+ modules are supported on all Allied Telesis devices with SFP+ uplink connections.

### Options

The SP10 Series offers short-haul and long-haul solutions. From the inexpensive Allied Telesis SP10SR to the far-reaching Allied Telesis SP10ZR80/I, the network can be extended to meet any performance needs.

### Interoperability

The SP10 Series SFP+ modules fully comply with industry-standard networking regulations. This allows the SP10 Series to be used with any networking equipment which complies with industry standards.

### BiDi transceivers

Using an SFP BiDi transceiver can upgrade transmission capacity on a typical network—without installing new fibers—by utilizing a single fiber for both the send and receive signals.

### Applications

The Allied Telesis 10G Long Reach Multimode (LRM) optic is designed to transmit and receive optical data over a legacy OM1 multi-mode fiber link up to 220m. This makes it ideal for high-speed storage area networks, computer cluster cross-connect and custom high-speed data pipes.

The extended temperature optics offer a wide operating temperature range of -40C to 85C, allowing deployment in even the harshest industrial environments.

## Key Features

- ▶ 10Gbps data rate
- ▶ Compact size
- ▶ Flexible architecture
- ▶ Hot-swappable
- ▶ RoHS compliant
- ▶ Compliant to SFP+ Electrical MSA SFF-8431
- ▶ Compliant to SFF-8472 MSA
- ▶ Lower power consumption < 1 Watt
- ▶ Digital diagnostics monitoring (DDM)
- ▶ Maximum data rate of 10.3Gbps
- ▶ BiDi options available

## Specifications

MODEL	FIBER TYPE	CONNECTOR TYPE	MAXIMUM DISTANCE	WAVELENGTH Tx/Rx (nm)	DDM*	TRANSMIT (dBm)		RECEIVE SENSITIVITY (dBm)	Power Budget (dBm)	OVERLOAD (dBm)	OPERATING TEMPERATURE
						MIN	MAX				
SP10T	100/1G/10G	RJ45	Cat 6a/7 - 20 m	-	-	-	-	-	-	-	-5°C to 85°C (23°F to 185°F)
SP10SR	MMF	LC	OM1 - 33 m OM2 - 82 m	850	Yes	-7	-1	-12	5	-1	0°C to 70°C (32°F to 158°F)
SP10SR/I	MMF	LC	OM3 - 300 m OM4 - 470 m	850	Yes	-5	-1	-10	5	-1	-40°C to 85°C (-40°F to 185°F)
SP10LR	SMF	LC	Up to 10 km	1310	Yes	-8	1	-13	5	1	0°C to 70°C (32°F to 158°F)
SP10LR/I	SMF	LC	Up to 10 km	1310	Yes	-8	1	-14	6	1	-40°C to 85°C (-40°F to 185°F)
SP10LRM	MMF	LC	OM1 - 220 m	1310	Yes	-8	1	-6	-2	1	0°C to 70°C (32°F to 158°F)
SP10ER40/I	SMF	LC	Up to 40 km	1550	Yes	-5	4	-14	9	1	-40°C to 85°C (-40°F to 185°F)
SP10ZR80/I	SMF	LC	Up to 80 km	1550	Yes	0	5	-20	20	1	-40°C to 85°C (-40°F to 185°F)
SP10BD10/I-12	SMF	LC	up to 10 km	1270/1330	Yes	-6	-1	-14	8	1	-40°C to 85°C (-40°F to 185°F)
SP10BD10/I-13	SMF	LC	up to 10 km	1330/1270	Yes	-6	-1	-14	8	1	-40°C to 85°C (-40°F to 185°F)
SP10BD20-12	SMF	LC	uo to 20 km	1270/1330	Yes	-3	3	-15	12	1	0°C to 70°C (32°F to 158°F)
SP10BD20-13	SMF	LC	uo to 20 km	1330/1270	Yes	-3	3	-15	12	1	0°C to 70°C (32°F to 158°F)
SP10BD40/I-12	SMF	LC	uo to 40 km	1270/1330	Yes	-1	4	-15	14	1	-40°C to 85°C (-40°F to 185°F)
SP10BD40/I-13	SMF	LC	uo to 40 km	1330/1270	Yes	-1	4	-15	14	1	-40°C to 85°C (-40°F to 185°F)

Power consumption: <1W

\*Digital Diagnostics Monitoring

## SP10 Series | 10Gigabit Small Form-Factor Pluggable Modules

### Environmental Specifications for Commercial Temperature Optics:

Operating temperature

Fiber: 0°C to 70°C (32°F to 158°F)

SP10T: -5°C to 85°C (23°F to 185°F)

Storage temperature: -40°C to 85°C (-40°F to 185°F)

Relative humidity: 0 to 80% non-condensing

### Environmental Specifications for Industrial Temperature Optics:

Operating temperature: -40°C to 85°C (-40°F to 185°F)

Storage temperature: -40°C to 85°C (-40°F to 185°F)

Relative humidity: 0 to 85% non-condensing

### Ordering Information

#### Commercial Temperature

##### AT-SP10T

100/1000/10000T, 20 m, CAT6a/7

##### AT-SP10SR

10GBASE-SR, 850 nm, MMF

##### AT-SP10LR

10GBASE-LR, 1310 nm, 10 km with SMF

##### AT-SP10LRM

10GBASE-LRM, 1310 nm FP, MMF

#### Industrial Temperature

##### AT-SP10SR/I

10GBASE-SR, 850 nm, MMF, I-Temp, TAA\*

##### AT-SP10LR/I

10GBASE-LR, 1310 nm, 10 km with SMF, I-Temp, TAA\*

##### AT-SP10ER40/I

10GBASE-ER, 1550 nm, 40 km with SMF, I-Temp, TAA\*

##### AT-SP10ZR80/I

10GBASE-ZR, 1550 nm, 80 km with SMF, I-Temp, TAA\*

### BiDi Transceivers

##### AT-SP10BD10/I-12

10G 1270/1330, 10 km, I-Temp, TAA\*

##### AT-SP10BD10/I-13

10G 1330/1270, 10 km, I-Temp, TAA\*

##### AT-SP10BD20-12

10G 1270/1330, 20 km, TAA\*

##### AT-SP10BD20-13

10G 1330/1270, 20 km, TAA\*

##### AT-SP10BD40/I-12

10G 1270/1330, 40 km, I-Temp, TAA\*

##### AT-SP10BD40/I-13

10G 1330/1270, 40 km, I-Temp, TAA\*

\*TAA = Trade Act Agreement Compliant



NETWORK SMARTER

**North America Headquarters** | 19800 North Creek Parkway | Suite 100 | Bothell | WA 98011 | USA | T: +1 800 424 4284 | F: +1 425 481 3895

**Asia-Pacific Headquarters** | 11 Tai Seng Link | Singapore | 534182 | T: +65 6383 3832 | F: +65 6383 3830

**EMEA & CSA Operations** | Incheonweg 7 | 1437 EK Rozenburg | The Netherlands | T: +31 20 7950020 | F: +31 20 7950021

[alliedtelesis.com](http://alliedtelesis.com)

© 2018 Allied Telesis, Inc. All rights reserved. Information in this document is subject to change without notice. All company names, logos, and product designs that are trademarks or registered trademarks are the property of their respective owners.  
617-000592 RevD