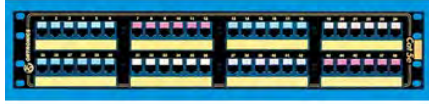

CAT 5E, 48-PORT PANEL, HIGH DENSITY, MOD TO 110, 19" X 3.5"

OR-851004865 | [Ortronics](#)



FEATURES & BENEFITS

Category 5e, 48-Port Modular to 110 High Density Patch Panel, 3.5" x 19". Jacks are grouped in six-port modules and are T568A wired.



- High density design
- 110 termination
- Wire management bar included
- Front and rear designation strips

SPECIFICATIONS

GENERAL INFO

Mod Jack Wiring: T568A
Number Of Ports: 48
Product Series: Clarity
Type: Patch Panels

ASSEMBLY/INSTALLATION INFORMATION

Installation Tips: Route cables from both sides of the Relay Rack rather than from one side only. Maintain pair twist to within .50" (13 mm) of point of termination for maximum data performance

LISTING AGENCIES/THIRD PARTY CERTIFICATIONS

RoHS: Yes
CSA Listing Info: LR 90894
CUL Listing No: E131600
UL Listing No: E131600

CONSTRUCTION INFORMATION

Component 1: Panel
Component 2: Six-port jack housing
Component 3: Linear modular contact
Component 4: 110D connecting block housing
Component 5: IDC contact
Finish Plating 1: Painted black - texture with white silkscreen
Finish Plating 3: 50 micro inch gold or GTX
Finish Plating 5: 63/37 Tin Lead Plating
Material 1: 0.125" Aluminum
Material 2: ABS UL94V-0
Material 3: Phosphor Bronze
Material 4: ABS UL94V-0
Material 5: Phosphor Bronze

DIMENSIONS

Cable Diameter Range: 22-26 AWG
Depth (Metric): 3.175 mm
Height (Metric): 88.9 mm
Height (US): 3.5"
Width (Metric): 482.6 mm

TECHNICAL INFORMATION

Category Rating: Cat 5e
Performance Rating: Cat5e
Product Fits Into: Mighty Mo Racks and Cabinets