

Remote Power Managers - EV6 Series

8 & 24-port IP-addressable RPMs

The RPM-EV6 series of products are IP-addressable RPMs that allow administrators and technicians to remotely control the power to connected servers, network equipment, and security devices, eliminating the need for expensive and time-consuming service calls to reboot unresponsive locked-up devices.

Each RPM-EV6 also has the capability to perform scheduled shutdowns and startups, offering additional cost savings via reduced energy consumption. When a device experiences a lock-up, the RPM-EV6 can automatically notify administrators and users via email or SNMP traps, while also allowing user-configurable actions.



Internet-Ready RPM
Access to port controls



Automatic Notification
Stay ahead of power problems



Mobile Access & Control
Via smartphone, tablet, or PC



3-yr Electronics Warranty
Parts & labor warranty

Applications



POS Systems
ATMs, Cash Registers



Security
Midsize DVR, Acc Ctrl, Intrusion



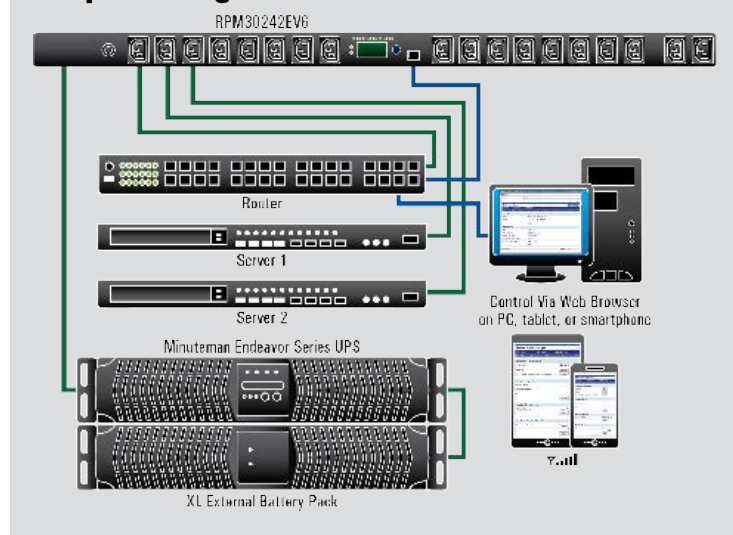
IT/Network
Switches, Hubs, Access Points

Capacity:

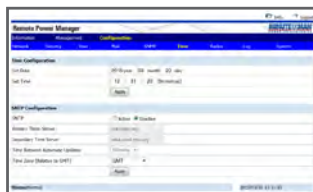
Sm Med Lrg

How do remote power managers work?

Sample Configuration



Monitor RPM Info in Real Time



Securely access the RPM control interface from anywhere with the easy-to-use web-based control panel:

- PCs / Laptops
- Smartphones
- Tablets

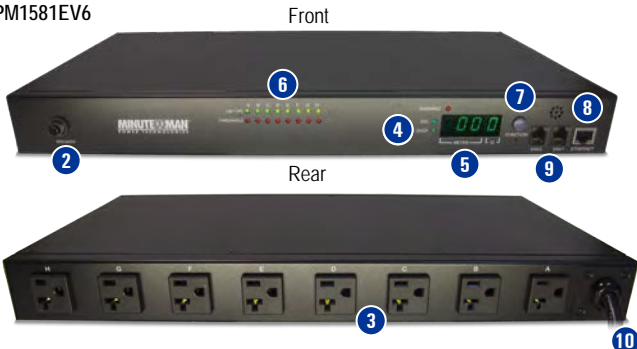
Key Features

- IP-addressable Remote Power Manager
- Built-in Web Server to support Remote Power Management
- Local LCD displays Amps, IP Address, Temperature and/or Humidity
- Daily, Weekly, Monthly & Yearly Power Consumption Data
- 10/100 Base-T Ethernet Port
- IPv4, IPv6 Support and SNMP Support (v1,v2c,v3)
- Telnet, SSH Encryption Support
- Radius Authentication
- User Account for Three Different Permissions Management Systems
- Alarm Notification via Email, SNMP, Syslog, LED or Audible Alarm
- SSL Web Browser for Set Up and Operation
- IP Address Filtering
- Maximum 5,000 Entries for Each Power Consumption Data and Event log
- Remote Firmware Upgrade Support
- SNMP Heart Beat Trap Available
- Reports in Fahrenheit or Celsius
- Export and Import RPM Configuration
- True RMS Current Measurement
- Provides Voltage, Frequency, Power Factor, Active Power, Apparent Power and kWh information
- Remote Outlet On/Off Power Switching
- Remote Outlet Current Monitoring
- User Defined Alarm Thresholds for Warning and Overload
- User Defined Power On/Off Sequence Timing
- Timed & Scheduled On/Off/Reboot Switching
- Alternative Outlet Restart Mode: Memorize Previous Status, Always On or Always Off
- Ping No-Answer Alarm
- Outlet Action via Preset-Event: Including Power Event, Environment Event and Receiving Trap from Other Devices
- Circuit Breaker Protection
- Free Bundle Management Utility

RPM-EV6 Specifications & Features

8 & 24-port IP-addressable RPMs

Model Number	RPM1581EV6	RPM30241EV6	RPM30242EV6
Number of Phases	Single (1Ø 2W + G)	Single (1Ø 2W + G)	
Input & Output Voltage	100-120VAC	100-120VAC	200-240VAC
Input & Output Frequency	50/60Hz		
Input Circuit Breaker	15 Amps	30 Amps	
Total Output Current (max)	12 Amps	24 Amps	
Number of Outlets	8	24	24
Input Protection	Re-settable Circuit Breaker		
Operating Temperature	0 to 50°C (+32 to +122°F)		
Storage Temperature	0 to +65°C (+32 to +149°F)		
Operating/Storage Humidity	0 - 90% Non-Condensing		
Operating Elevation	0 to 3,000m (0 to 10,000 ft)		
Storage Elevation	0 to 15,000m (0 to 50,000 ft)		
Cord Length (ft)	10		
Power Cord	NEMA 5-15P	NEMA L5-30P	NEMA L6-30P
Output Receptacles	8 - NEMA 5-15/20R	24 - NEMA 5-15/20R	IEC 320 3 - C19, 21 - C13
Net Dimensions (L x W x H)	17.0 x 8.5 x 1.8" 432 x 216 x 44.5mm	70.0 x 2.2 x 3.2" 1778 x 56 x 80mm	
Net Weight	7.9 lbs 3.6 kgs	18.5 lbs 8.4 kgs	18.7 lbs 8.5 kgs
Shipping Dimensions (L x W x H)	19.29 x 12.99 x 6.1" 490 x 330 x 155mm	74.71 x 4.33 x 8.66" 1890 x 110 220mm	
Shipping Weight	9.3 lbs 4.2 kgs	21.2 lbs 9.6 kgs	21.4 lbs 9.7 kgs
Safety Certification	cUL, UL 60950-1, CE		



- 1 Mountable Rack Ears
- 2 Circuit Breaker
- 3 AC Outlets
- 4 SSL & DHCP Status Indicators
- 5 True RMS Load Status Meter
- 6 Outlet Power Status Indicators
- 7 Function Switch
- 8 Ethernet Connection
- 9 Temperature Probe Connection
- 10 Input Power Cord



Para Systems, Inc.

1455 LeMay Drive
Carrollton, TX 75007
800.238.7272 • 972.446.7363
www.minutemanups.com • www.sizemyups.com



Standard 3-year parts and labor warranty for properly connected equipment

© Copyright 2016, Para Systems, Inc. Product specifications are subject to change without notice. Minuteman is a registered trademark of Para Systems, Inc. All rights reserved.

Publication No. 34000515 (2-2016)