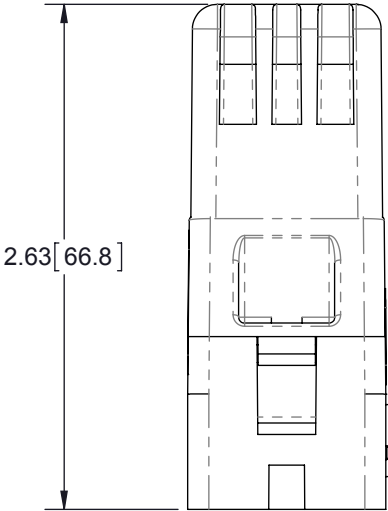
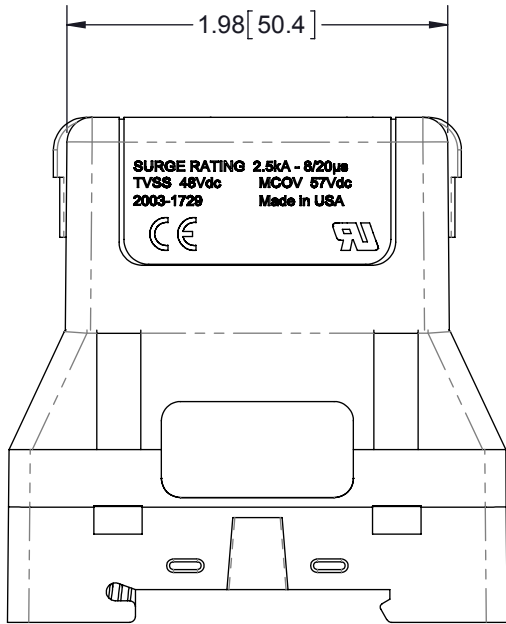
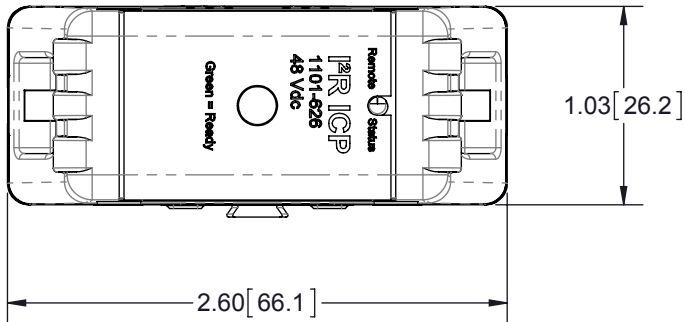
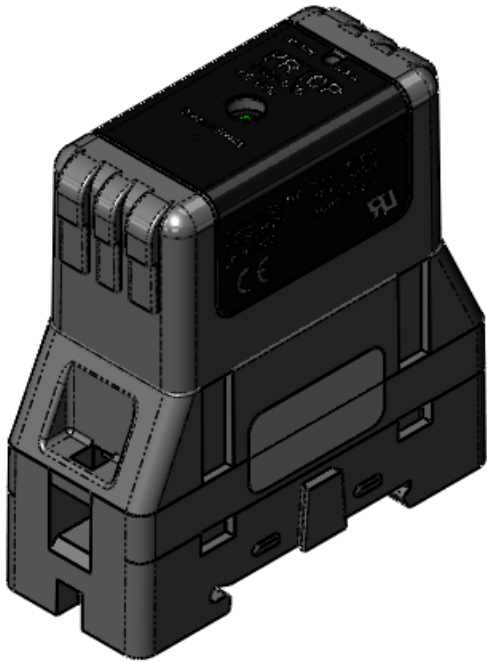
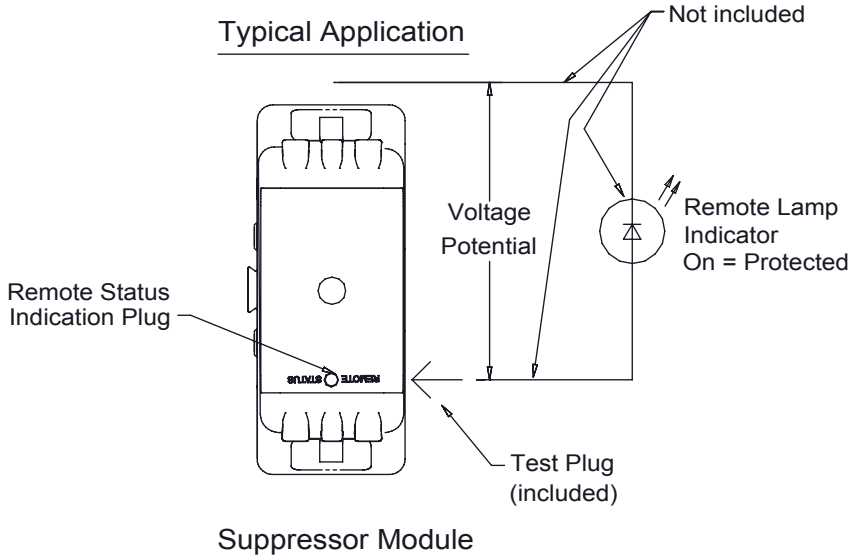


REVISIONS				
REV.	DESCRIPTION	ECN	DATE	APPROVED
A	PRODUCTION RELEASE		1/21/14	MLH



MAXIMUM CHARACTERISTICS

Application:
The I²R ICP 48VDC is ideal for protecting 48Vdc signaling and power lines. The device employs silicon avalanche diode technology to provide best in class low voltage surge protection. No other protection technology can truly provide suitable low voltage surge mitigation as close to the actual dc operating voltage. The device installs in parallel with the electrical circuit is not polarity sensitive. The device consists of a surge module which plugs into the wiring connection base. The base can be DIN rail mounted or easily panel mounted with a screw through the center of the base. An LED illuminates to show power applied and suppressor operational and includes a remote status test point to operate a remote indicator. The I²R ICP 48VDC is recognized to UL 497b and is Rohs compliant. RoHS exemption 7b from Annex III.

Electrical Performance:

Operating Voltage: 48/57 Vdc maximum
Configuration: 2 wire
Input Connection: Screw-Term Block (4-14 AWG)
Status Indicator: Green LED, On=Suppressor Operational,
Off=Suppressor Not Operational or Power Not Applied
Voltage Protection Levels:
2.5kA 8/20µs: 125 Vpeak
300A 10/1000µs: 90 Vpeak
Maximum Continuous Operating Voltage U_c: 57 Vdc
Suppression Element Used: Silicon Avalanche Diodes
Suppression Element Response Time (off-to-full on): less than 5ns

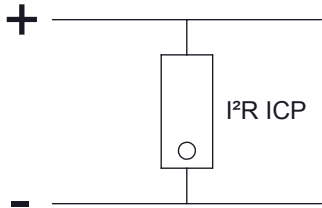
Mechanical:

Mounting: The I²R ICP has two mounting options:
35mm DIN Rail
Screw mount
Dimensions: 2.60" long, 1.03" wide and 2.63" tall

Environmental:

Operating/Storage temperature: -40°C to +80°C
Relative Humidity: 100% (non-condensing)


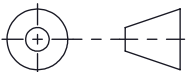
INSTALLATION DIAGRAM



THESE COMMODITIES, TECHNOLOGY OR SOFTWARE WERE EXPORTED FROM THE UNITED STATES IN ACCORDANCE WITH THE EXPORT ADMINISTRATION REGULATIONS. DIVERSION CONTRARY TO U.S. LAW PROHIBITED.

CUSTOMER APPROVAL: _____ DATE: _____

ALL DIMENSIONS SHOWN ARE FOR REFERENCE ONLY.

UNLESS OTHERWISE SPECIFIED LEADING DIMENSIONS ARE INCHES DIMENSIONS IN [] ARE MILLIMETERS	DRAWN	HMB	DATE	1/3/14					
	ENG APPD	MPD	1/20/14						
	TOLERANCES: FRACTIONS=± 1/32 .XX=± .03 ANGLES=± 1 ° .XXX=± .005	PRODUCT MGR	MLH	1/21/14	TITLE I2R ICP 48VDC SASD CUSTOMER SPECIFICATION				
		MARKETING APPD	SCR	1/21/14					
MATERIAL NOTED	PROJECT NO.								
	THIRD-ANGLE PROJECTION		NOTICE: THE INFORMATION AND DESIGN IN THIS DOCUMENT IS THE PROPERTY OF TRANSECTOR SYSTEMS. ALL RIGHTS RESERVED.		SIZE	CAGE	PART NUMBER		REV
			B	30992	1101-626		A		
			SCALE	1:1	PROD CAT	DCT	DOCUMENT NAME	1101-626-C	SHEET 1 OF 1