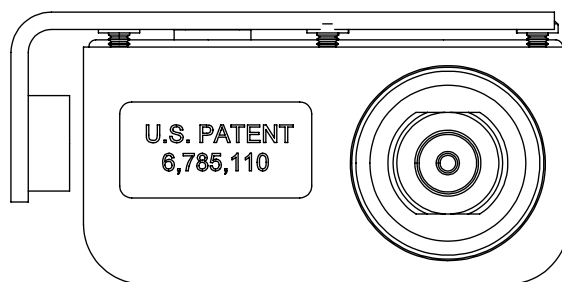
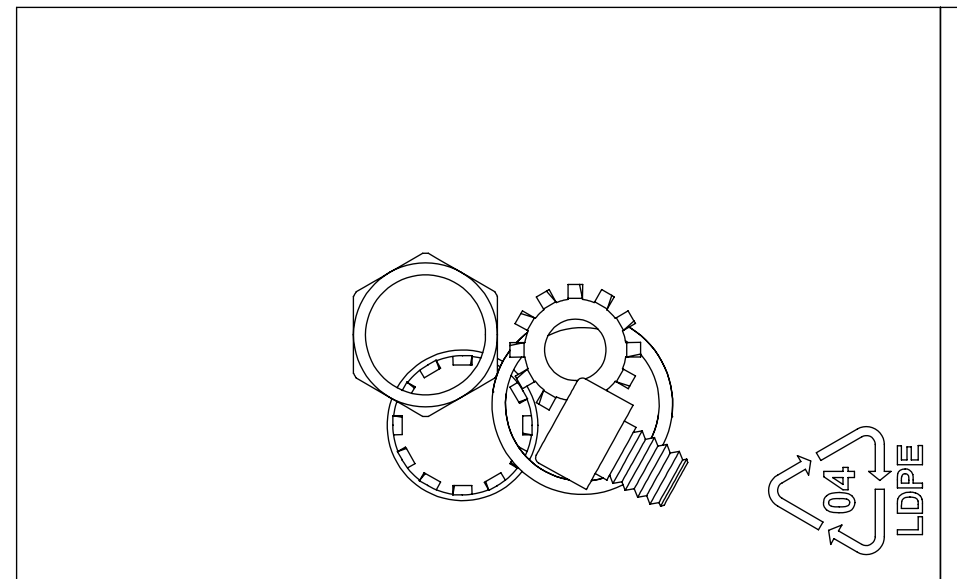
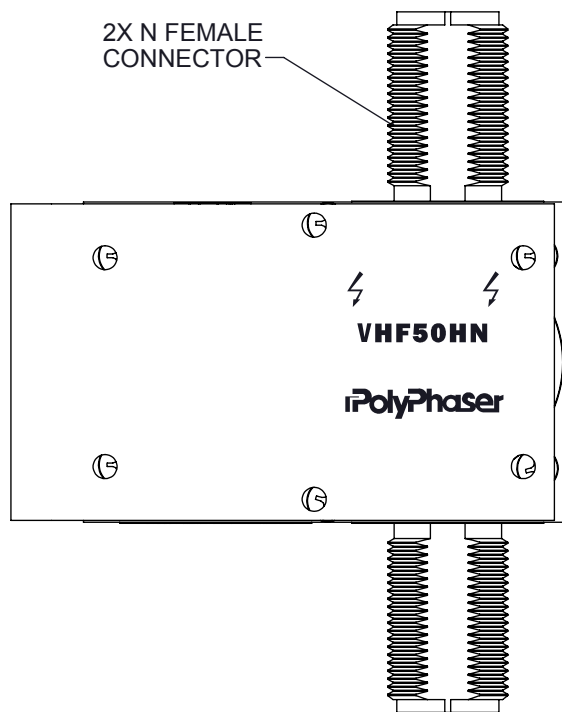
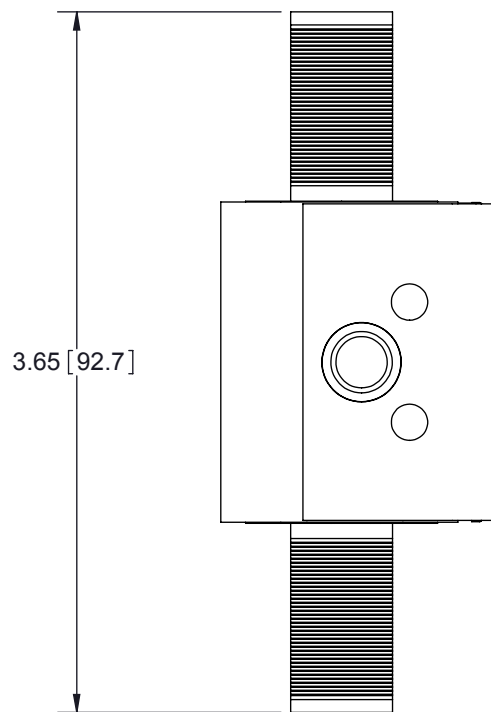


REVISIONS				
REV.	DESCRIPTION	ECN	DATE	APPROVED
G	REFER TO ECN	11912	8/01/13	KCB



MAXIMUM CHARACTERISTICS

Application:

Weatherized, Flange or Bulkhead Mount use to protect critical communications such as public safety and rail.

Electrical Performance:

Frequency Range: 100MHz to 512 MHz

VSWR: $\leq 1.1:1$ Over Frequency Range

Insertion Loss: ≤ 0.1 dB Over Frequency Range

Power: 750W RMS Average

Max. Surge: 20kA IEC 61000-4-5 8/20 μ s Waveform

Throughput Energy: ≤ 500 nJ for 3kA @ 8/20 μ s Waveform

Mechanical:

Dimensions: 3.65" x 2.82" x 1.40"

Weight: .5lbs

Environmental:

Meets IEC 60529 IP67

Meets Bellcore #TA-NWT-000487

Procedure 4.11, Wind Driven (120mph) Rain Intrusion Test.


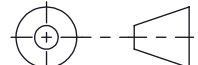
Operating temperature: -50°C to +85°C

Relative Humidity: to 95%

CE Compliant
RoHS Compliant

CUSTOMER APPROVAL: _____ DATE: _____

ALL DIMENSIONS SHOWN ARE FOR REFERENCE ONLY.

UNLESS OTHERWISE SPECIFIED LEADING DIMENSIONS ARE INCHES DIMENSIONS IN [] ARE MILLIMETERS TOLERANCES: FRACTIONS=± 1/32 .XX=± .03 ANGLES=± 1° .XXX=± .010	DRAWN	SH	DATE				
	ENG APPD	NT	04/24/03				
	PRODUCT MGR	SD	04/25/03				
	MARKETING APPD	LJ	04/28/03				
MATERIAL NA	PROJECT NO.	TITLE			CUSTOMER SPECIFICATION		
THIRD-ANGLE PROJECTION	NOTICE: THE INFORMATION AND DESIGN IN THIS DOCUMENT IS THE PROPERTY OF TRANSTECTOR SYSTEMS. ALL RIGHTS RESERVED.			SIZE	CAGE	PART NUMBER	REV
				B	61114	VHF50HN	G
				SCALE	PROD CAT	DOCUMENT NAME	SHEET
				1:1	RFP	VHF50HN-C	1 OF 1

THESE COMMODITIES, TECHNOLOGY OR SOFTWARE WERE EXPORTED FROM THE UNITED STATES IN ACCORDANCE WITH THE EXPORT ADMINISTRATION REGULATIONS. DIVERSION CONTRARY TO U.S. LAW PROHIBITED.