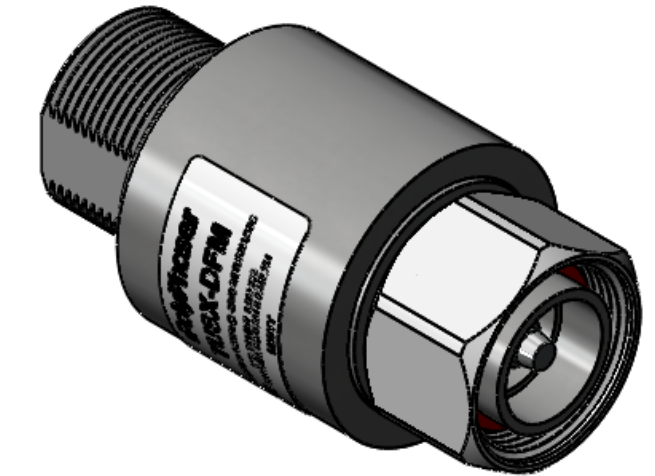
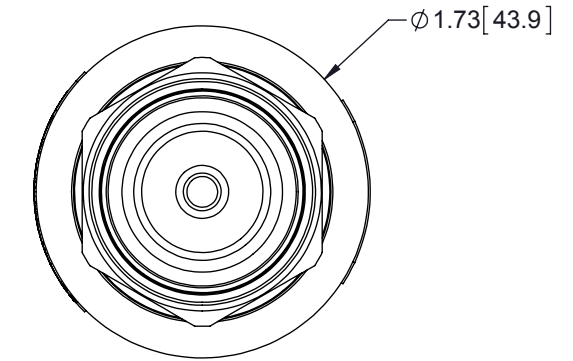
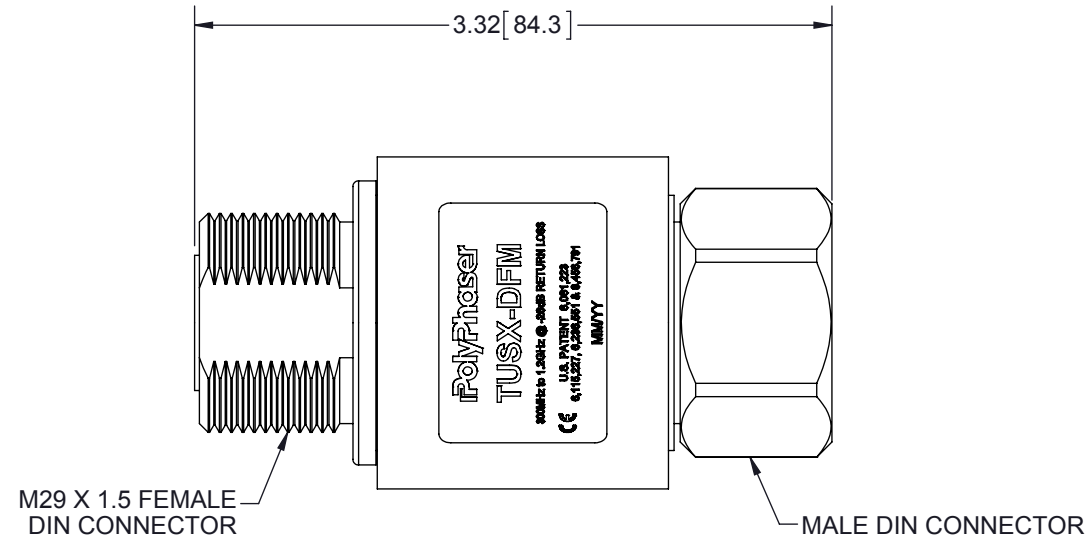
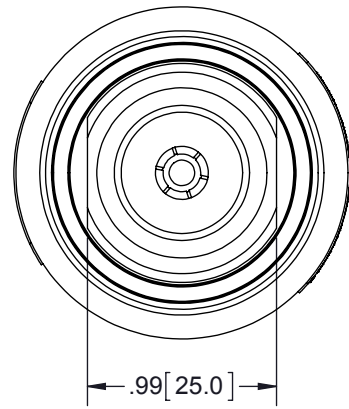


REVISIONS				
REV.	DESCRIPTION	ECN	DATE	APPROVED
F	REFER TO ECN	12840	8/26/2014	JJ



### MAXIMUM CHARACTERISTICS

APPLICATION:  
 DC SHORT/RF ONLY (NO POWER SUPPLY PROVISIONS)  
 BULKHEAD MOUNT BI-DIRECTIONAL  
 WEATHERPROOF WHEN INSTALLED  
 FREQUENCY RANGE:  
 300MHz TO 1.2GHz @ -26dB RETURN LOSS  
 MAX SURGE:  
 IEC 61000-4-5 8/20µs WAVEFORM  
 30kA MULTIPLE STRIKES  
 40kA ONE TIME  
 INSERTION LOSS:  
 ≤0.1dB  
 CONTINUOUS POWER:  
 1kW @ 920MHz  
 2.5kW @ 400MHz  
 LET THROUGH VOLTAGE:  
 ≤±200mV FOR 3kA @ 8/20µs WAVEFORM  
 THROUGHPUT ENERGY:  
 ≤5nJ FOR 3kA @ 8/20µs WAVEFORM  
 PIM 3rd ORDER:  
 <-155dBc (-112dBm); 2 X 20W INPUT  
 TEMPERATURE:  
 -50°C TO +85°C STORAGE/OPERATING  
 VIBRATION:  
 1G @ 5Hz TO 100Hz  
 MATERIAL:  
 BODY: TRI-M3™ PLATING OVER BRASS  
 PTFE: DIELECTRIC  
 CENTER PINS: Ag PLATED  
 ENVIRONMENTAL:  
 MEETS IEC 60529 IP67 WHEN CONNECTED  
 MEETS BELLCORE #TA-NWT-000487  
 PROCEDURE 4.11, 120MPH WIND DRIVEN  
 RAIN INTRUSION TEST  
 CE COMPLIANT  
 RoHS COMPLIANT

HARDWARE KIT	
QTY.	DESCRIPTION
1	O-RING 025 SILICONE
1	NUT M29 X 1.5 SST DIN
1	WASHER 1.15ID FLAT SST TYPE 304

CUSTOMER APPROVAL: \_\_\_\_\_ DATE: \_\_\_\_\_

ALL DIMENSIONS SHOWN ARE FOR REFERENCE ONLY.

THESE COMMODITIES, TECHNOLOGY OR SOFTWARE WERE EXPORTED FROM THE UNITED STATES IN ACCORDANCE WITH THE EXPORT ADMINISTRATION REGULATIONS. DIVERSION CONTRARY TO U.S. LAW PROHIBITED.

UNLESS OTHERWISE SPECIFIED LEADING DIMENSIONS ARE INCHES DIMENSIONS IN [ ] ARE MILLIMETERS		DRAWN <b>R. DUNNING</b> ENG APPD		DATE 7/16/10									
TOLERANCES: FRACTIONS=± 1/32 .XX=± .03 ANGLES=± 1° .XXX=± .010		PRODUCT MGR <b>JJ</b>		7/20/10						TITLE <b>300MHz TO 1.2GHz UHF          SX BI-DIR FEM/MALE</b> <small>CUSTOMER SPECIFICATION</small>			
MATERIAL NA		MARKETING APPD <b>JJ</b>		7/20/10									
THIRD-ANGLE PROJECTION 		NOTICE: THE INFORMATION AND DESIGN IN THIS DOCUMENT IS THE PROPERTY OF TRANSTECTOR SYSTEMS. ALL RIGHTS RESERVED.				SCALE <b>1:1</b>	PROD CAT <b>RFP</b>	DOCUMENT NAME <b>TUSX-DFM-C</b>	SHEET <b>1</b>	OF <b>1</b>			