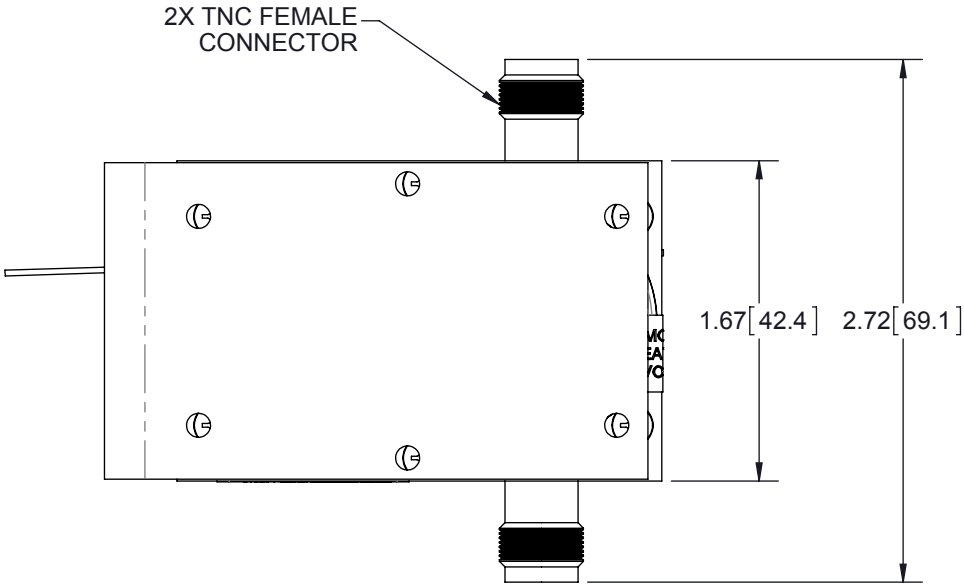
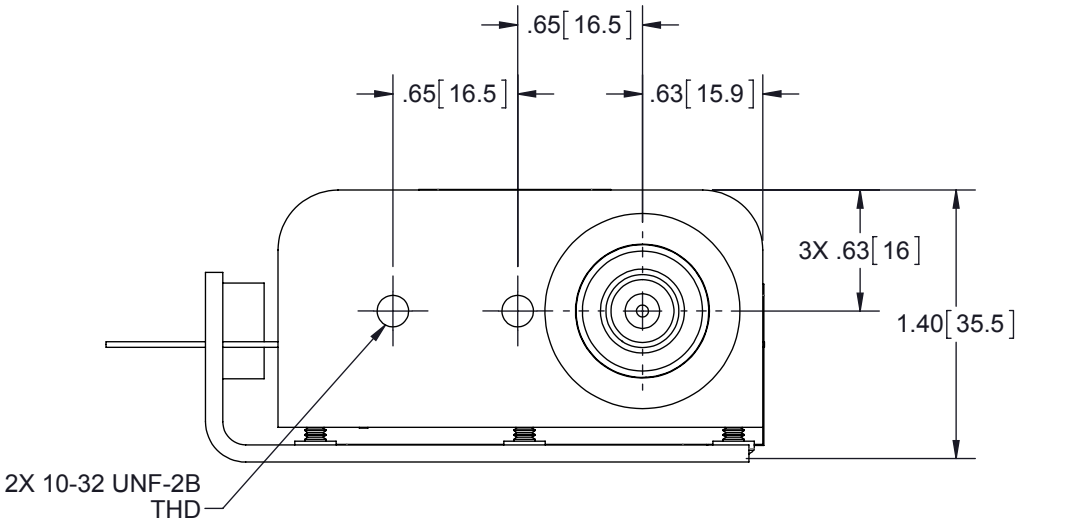


REVISIONS				
REV.	DESCRIPTION	ECN	DATE	APPROVED
H	REFER TO ECN	11905	7/30/13	KCB



CUSTOMER APPROVAL: _____ DATE: _____

ALL DIMENSIONS SHOWN ARE FOR REFERENCE ONLY.

MAXIMUM CHARACTERISTICS

Application:
Used where DC voltage is required
Ideal for GPS
Weatherized Flange or Bulkhead Mount


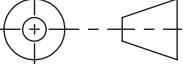
Electrical Performance:
Frequency Range: 800MHz to 2500MHz
VSWR: $\leq 1.1:1$ Over Frequency Range
Insertion Loss: $\leq 0.1\text{dB}$ Over Frequency Range
Power: 300Wrms Average
Turn On: $\pm 16.5\text{Vdc}$
Turn On Time: 4ns For 2kV/ns
Max Surge: 20kA IEC 61000-4-5 8/20 μs Waveform
Throughput Energy: $\leq 500\mu\text{J}$ for 3kA @ 8/20 μs Waveform
User Voltage: +15Vdc Max
Usage Current: $\leq 4.0\text{A}$ Continuous

Mechanical:
Dimensions: 2.72" x 2.82" x 1.40"
Weight: .35lbs

Environmental:
Meets IEC 60529 IP67
Meets Bellcore #TA-NWT-000487
Procedure 4.11, Wind Driven (120mph) Rain Intrusion Test.
Operating temperature: -50°C to +85°C
Relative Humidity: To 95%

CE Compliant
RoHS Compliant

THESE COMMODITIES, TECHNOLOGY OR SOFTWARE WERE EXPORTED FROM THE UNITED STATES IN ACCORDANCE WITH THE EXPORT ADMINISTRATION REGULATIONS. DIVERSION CONTRARY TO U.S. LAW PROHIBITED.

UNLESS OTHERWISE SPECIFIED LEADING DIMENSIONS ARE INCHES DIMENSIONS IN [] ARE MILLIMETERS TOLERANCES: FRACTIONS=± 1/32 .XX=± .01 ANGLES=± 1 ° .XXX=± .005		DRAWN SH	DATE 11/04/03				
		ENG APPD KCB	11/10/03				
		PRODUCT MGR LJ	11/10/03				
		MARKETING APPD PH	11/10/03				
MATERIAL .		PROJECT NO. .		TITLE 800-2500MHZ BROADBAND CUSTOMER SPECIFICATION			
THIRD-ANGLE PROJECTION 		NOTICE: THE INFORMATION AND DESIGN IN THIS DOCUMENT IS THE PROPERTY OF TRANSECTOR SYSTEMS. ALL RIGHTS RESERVED.		SIZE B	CAGE 61114	PART NUMBER DGXZ+15TFTF-A	REV H
				SCALE 1:1	PROD CAT RFP	DOCUMENT NAME DGXZ+15TFTF-A-C	SHEET 1 OF 1