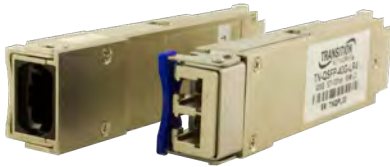


TN-QSFP-40G Series

Cisco Compliant 40G QSFP+ QSFP+ 40GBase-X With DMI



The Transition Networks TN-QSFP-40G series 40G QSFP+ optical transceivers are designed to install in any QSFP+ port allowing for 40GBase-X interfaces to the network through the QSFP+ connector. The TN-QSFP-40G transceivers are Cisco Compliant* and are designed for bi-directional serial-optical data communication such as 40G Ethernet.

Applications include: 40G Ethernet, 10G Ethernet, and Data Center Aggregation Connection.

Features

- High capacity: up to 44.4 Gbps per module
- Compliant with SFF 8436 QSFP+ MSA
- Single +3.3 V Power Supply
- RoHS Compliant (all models)
- Low Power Dissipation : SR4 < 1.5 Watts, LR4 < 3.5w
- **40GBase-SR4: 4 lanes, up to 11.1Gbps per lane, Standard MPO connector**
- **40GBase-LR4: 4 wavelength CWDM Mux/Demux design, up to 11.1Gbps per wavelength, Duplex LC connector**
- Digital Diagnostic Monitoring
- Class 1 Laser International Safety Standard IEC 60825 Compliant

Specifications

Standards	IEEE 802.3ba SFF 8436
Dimensions	Width: 0.71" [18 mm] Depth: 2.83" [72 mm] Height: 0.33" [8.5 mm]
Power Input	3.3V
Environment	Operating: 0°C to +70°C Storage: -40°C to +85°C
Compliance	IEC 60825-1, FDA CDRH 21-CFR 1040.10 Class 1
Warranty	Lifetime

*Transition Networks' QSFP+ modules fully comply with the Multi-Sourcing Agreement (MSA). This compliance allows our QSFP+ modules to be used in all other MSA compliant QSFP+ platforms. In addition, Transition Networks QSFP+ modules are also Compliant with all Cisco QSFP+ based routers and switches, as well as Cisco's IOS software. Transition Networks QSFP+ modules ARE NOT Cisco OEM brand modules.



Ordering Information

Duplex

TN-QSFP-40G-SR4

QSFP+ 40GBase-SR4, 850nm multimode (MPO)
[400m/1313ft. on OM4, 300m/985ft. on OM3]
with DMI Link Budget: 2.3 dB

TN-QSFP-40G-LR4

QSFP+ 40GBase-LR4, 1271nm, 1291nm, 1311nm, 1331nm, single mode (LC)
[10km/6.2mi.] with DMI Link Budget: 7.0 dB

TN-QSFP-40G-LR4-3

QSFP+ 40GBase-LR4, 1271nm, 1291nm, 1311nm, 1331nm single mode (LC)
[30km/18.7mi.] with DMI Link Budget: 9.0 dB