



OptiFlood Mini MVP504

MVP504 CPO-TW45W K EB I A

OptiFlood - MASTER CosmoWhite CPO-TW - 45 W - Electronic - Asymmetrical

Philips has a long tradition of excellence in environmentally friendly asymmetric floodlighting systems for sports and general area lighting as well as architectural applications. OptiFlood's extremely efficient, best-in-class optical system provides an accurately controlled light distribution – total light cut-off above the horizontal and a peak beam intensity at high angles – keeping obtrusive light to a minimum. Both the MVP504 and MVP506 versions are available with two types of reflector – asymmetric or road-lighting POT optics – for flexibility in application. They can also accommodate CosmoPolis metal-halide lamps for good color rendering, high-pressure sodium lamps for economical operation, and MASTERColour CDM Elite MW lamps for highly efficient lighting with longer-lasting white light. OptiFlood is also available in a LED version (BVP506). With its compact shape and aesthetically pleasing design, OptiFlood can be used in applications where design and appearance are just as important as technical performance. In the design, attention has also been focused on the detailing. This has led to integrated 'hidden' hinges, angle adjustment designed as part of the body and a mounting bracket angled to allow more aesthetic integration onto columns.

Product data

General Information		Operating and Electrical	
Number of light sources	1 [1 pc]	CE mark	CE mark
Lamp family code	CPO-TW [MASTER CosmoWhite CPO-TW]	ENEC mark	-
Lamp power	45 W	Mechanical accessories	No [-]
Komblipack	Lamp(s) included	Outdoor optic type	Asymmetrical
Gear	EB [Electronic]	Product Family Code	MVP504 [OptiFlood]
Optical cover/lens type	GC [Clear glass]		
Embedded control	No [-]	Input voltage	220 to 240 V
Protection class IEC	Safety class I		

OptiFlood Mini MVP504

Ignitor	No [-]
---------	--------

Approval and Application

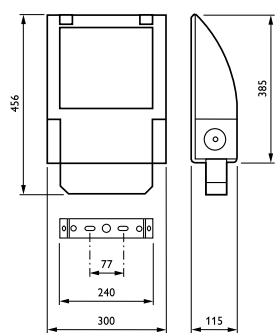
Ingress protection code	IP66 [Dust penetration-protected, jet-proof]
Mech. impact protection code	IK08 [5 J vandal-protected]

Product Data

Full product code	872790029277000
Order product name	MVP504 CPO-TW45W K EB I A
EAN/UPC – product	8727900292770

Order code	29277000
Local Code	MVP504C45WEA
Numerator – quantity per pack	1
Numerator – packs per outer box	1
Material no. (12NC)	910403760412
Net weight (piece)	6.750 kg

Dimensional drawing



OptiFlood MVP504

