



# Coreline tempo medium

871869945587300

Coreline tempo medium - LED module 12000 lm - 740 neutral white - Asymmetrical

CoreLine tempo medium is a highly efficient range of floodlights designed for 1:1 retrofit replacement of conventional technology, while retaining the same electrical installation and poles. A limited range of options makes it easy to find the best lux-for-lux replacement. The easy-to-install CoreLine tempo medium offers lumen packages for many different application areas as well as a choice of high-performance asymmetrical and symmetrical optics. It includes a U-shaped universal mounting bracket and external quick 3-poles IP68 connector.

## Product data

General Information			
Lamp family code	LED120 [ LED module 12000 lm]	ENEC mark	ENEC mark
Light source colour	740 neutral white	Warranty period	3 years
Light source replaceable	No	Outdoor optic type	Asymmetrical
Number of gear units	1 unit	Constant light output	No
Driver/power unit/transformer	PSU [ Power supply unit]	Number of products on MCB	8
Driver included	Yes	RoHS mark	RoHS mark
Optical cover/lens type	FG [ Flat glass]	LED engine type	LED
Luminaire light beam spread	9° - 41° x 102°	Product Family Code	BVP125 [ Coreline tempo medium]
Connection	External connector	Light Technical	
Cable	Cable 450 mm with connector 3-pole	Upward light output ratio	0
Protection class IEC	Safety class I	Standard tilt angle post-top	0°
Flammability mark	F [ For mounting on normally flammable surfaces]	Standard tilt angle side entry	0°
CE mark	CE mark		

Coreline tempo medium

Operating and Electrical	
Input voltage	220 to 240 V
Input frequency	50 to 60 Hz
Inrush current	53 A
Inrush time	0.3 ms
Power factor (min.)	0.96

Controls and Dimming	
Dimmable	No

Mechanical and Housing	
Housing material	Aluminium
Reflector material	-
Optic material	Polycarbonate
Optical cover/lens material	Glass
Fixation material	Aluminum
Mounting device	MBW [ Wall-mounting bracket]
Optical cover/lens shape	Flat
Optical cover/lens finish	Clear
Overall length	388.5 mm
Overall width	265 mm
Overall height	67.4 mm
Effective projected area	0.09 m²

Approval and Application	
Ingress protection code	IP66 [ Dust penetration-protected, jet-proof]
Mech. impact protection code	IK08 [ 5 J vandal-protected]

Initial Performance (IEC Compliant)	
Initial luminous flux	12000 lm

Luminous flux tolerance	+/-7%
Initial LED luminaire efficacy	129 lm/W
Init. Corr. colour temperature	4000 K
Init. colour rendering index	>70
Initial chromaticity	(0.382, 0.379) SDCM <3
Initial input power	95 W
Power consumption tolerance	+/-11%

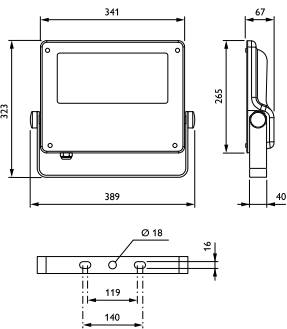
Over Time Performance (IEC Compliant)	
Driver failure rate at 5,000 hours	0.12 %
Useful life L80B10	70000 h
Lumen maintenance at useful life of 100,000 h, at 25 °C	93

Application Conditions	
Ambient temperature range	-40 to +35 °C

Product Data	
Full product code	871869945587300
Order product name	BVP125 LED120-4S/740 A
EAN/UPC – product	8718699455873
Order code	45587300
Numerator – quantity per pack	1
Numerator – packs per outer box	1
Material no. (12NC)	912300024001
Net weight (piece)	4.750 kg



Dimensional drawing



CoreLine Tempo BVP110/120/125/130/140

## Coreline tempo medium

