



CoreLine Wall-mounted

WL120V LED12S/840 PSU EL3 WH

CoreLine Wall-mounted - LED Module, system flux 1200 lm - 840 neutral white - Power supply unit - Emergency lighting 3 hours duration - - - White

Whether for a new building or renovation of an existing space, customers want lighting solutions that provide quality of light and substantial energy and maintenance savings. The new CoreLine Wall-mounted range of LED products can be used to replace traditional wall-mounted luminaires incorporating compact fluorescent lamps. The process of selecting, installing and maintaining is so easy – it's a simple switch.

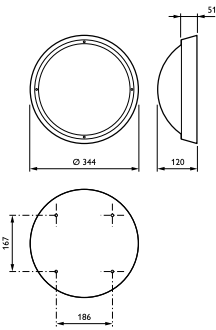
Product data

General Information			
Number of light sources	1 [1 pc]	Glow-wire test	Temperature 850 °C, duration 30 s
Lamp family code	LED12S [LED Module, system flux 1200 lm]	Flammability mark	F [For mounting on normally flammable surfaces]
Beam angle of light source	120 °	CE mark	CE mark
Light source colour	840 neutral white	ENEC mark	ENEC mark
Light source replaceable	No	Constant light output	No
Number of gear units	1 unit	Number of products on MCB	15
Driver/power unit/transformer	PSU [Power supply unit]	RoHS mark	RoHS mark
Driver included	Yes	Product Family Code	WL120V [CoreLine Wall-mounted]
Optic type	Symmetrical	Operating and Electrical	
Luminaire light beam spread	180°	Input voltage	220 to 240 V
Emergency lighting	EL3 [Emergency lighting 3 hours duration]	Input frequency	50 to 60 Hz
Embedded control	No [-]	Inrush current	22 A
Control interface	-	Inrush time	0.32 ms
Connection	Push-in connector and pull relief	Power factor (min.)	0.95
Cable	-		
Protection class IEC	Safety class I		

CoreLine Wall-mounted

Controls and Dimming	
Dimmable	No
Mechanical and Housing	
Housing material	Composite materials
Reflector material	-
Optic material	Polycarbonate
Optical cover/lens material	Polycarbonate
Fixation material	Polyamide
Optical cover/lens finish	Opal
Overall height	120 mm
Overall diameter	344 mm
Height	120 mm
Approval and Application	
Ingress protection code	IP65 [Dust penetration-protected, jet-proof]
Mech. impact protection code	IK10 [20 J vandal-resistant]
Initial Performance (IEC Compliant)	
Initial luminous flux	1200 lm
Luminous flux tolerance	+/-10%
Initial LED luminaire efficacy	67 lm/W
Init. Corr. colour temperature	4000 K
Init. colour rendering index	80
Initial chromaticity	(0.38, 0.38) SDCM <5
Initial input power	18 W

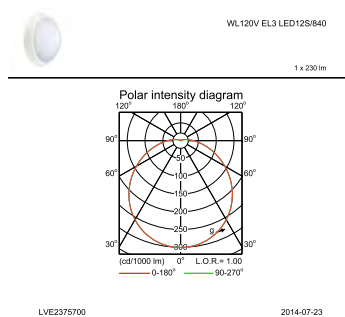
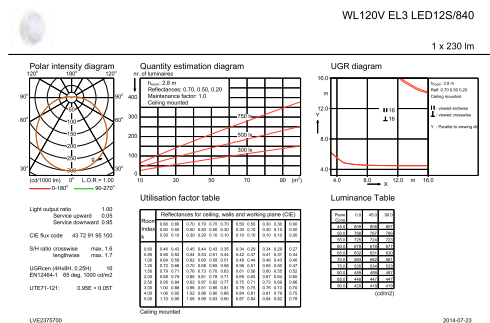
Dimensional drawing



CoreLine Wall-mounted WL120V/WL121V

Power consumption tolerance	+/-10%
Over Time Performance (IEC Compliant)	
Driver failure rate at 5,000 hours	1 %
Median useful life L70B50	50000 h
Median useful life L80B50	30000 h
Median useful life L90B50	15000 h
Application Conditions	
Ambient temperature range	0 to +25 °C
Maximum dimming level	Not applicable
Suitable for random switching	No
Product Data	
Full product code	871869624103500
Order product name	WL120V LED12S/840 PSU EL3 WH
EAN/UPC – product	8718696241035
Order code	24103500
Numerator – quantity per pack	1
Numerator – packs per outer box	1
Material no. (12NC)	910500454802
Net weight (piece)	1.930 kg

Photometric data



IFGU1_WL120V EL3 LED12S840.EPS

IFPC1_WL120V EL3 LED12S840.EPS

