



CoreLine Waterproof

WT120C LED34S/840 PSU L1500

Coreline Waterproof - LED Module, system flux 3400 lm - 840 neutral white - Power supply unit

Whether for a new building or renovation of an existing space, customers want lighting solutions that provide quality of light and substantial energy and maintenance savings. The new CoreLine Waterproof range of LED products can be used to replace traditional waterproof luminaires with fluorescent lamps. The process of selecting, installing and maintaining is so easy – it's a simple switch.

Product data

General Information			
Number of light sources	1 [1 pc]	CE mark	CE mark
Lamp family code	LED34S [LED Module, system flux 3400 lm]	ENEC mark	ENEC mark
Light source colour	840 neutral white	UL mark	No
Light source replaceable	No	Constant light output	No
Number of gear units	1 unit	Number of products on MCB	24
Driver/power unit/transformer	PSU [Power supply unit]	RoHS mark	RoHS mark
Driver included	Yes	Product Family Code	WT120C [Coreline Waterproof]
Optic type	No [-]	Operating and Electrical	
Optical cover/lens type	PC [Polycarbonate bowl/cover]	Input voltage	220 to 240 V
Luminaire light beam spread	110°	Input frequency	50 to 60 Hz
Emergency lighting	No [-]	Inrush current	17.8 A
Control interface	-	Inrush time	0.282 ms
Connection	Push-in connector 3-pole	Power factor (min.)	0.9
Cable	-	Controls and Dimming	
Protection class IEC	Safety class I	Dimmable	No
Glow-wire test	Temperature 850 °C, duration 30 s		
Flammability mark	F [For mounting on normally flammable surfaces]		

CoreLine Waterproof

Mechanical and Housing	
Housing material	Polycarbonate
Reflector material	Steel
Optic material	-
Optical cover/lens material	Polycarbonate
Fixation material	Stainless steel
Optical cover/lens finish	Textured
Overall length	1530 mm
Overall width	87 mm
Overall height	96 mm

Approval and Application	
Ingress protection code	IP65 [Dust penetration-protected, jet-proof]
Mech. impact protection code	IK08 [5 J vandal-protected]

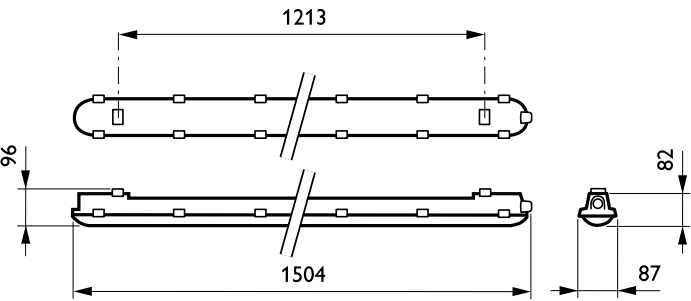
Initial Performance (IEC Compliant)	
Initial luminous flux	3400 lm
Luminous flux tolerance	+/-10%
Initial LED luminaire efficacy	117 lm/W
Init. Corr. colour temperature	4000 K
Init. colour rendering index	≥80
Initial chromaticity	(0.38, 0.38) SDCM <3.5
Initial input power	29 W
Power consumption tolerance	+/-10%

Over Time Performance (IEC Compliant)	
Driver failure rate at 5,000 hours	1 %
Median useful life L70B50	50000 h
Median useful life L80B50	30000 h
Median useful life L90B50	15000 h

Application Conditions	
Ambient temperature range	-20 to +35 °C
Average ambient temperature	25 °C
Maximum dimming level	Not applicable
Suitable for random switching	Yes (relates to presence/ movement detection and daylight harvesting)

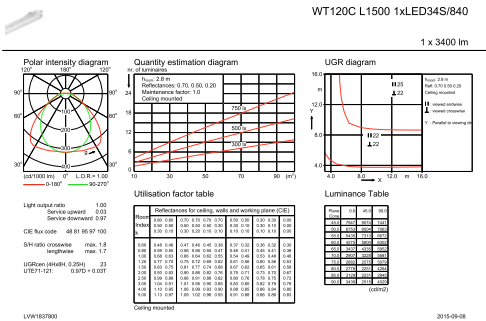
Product Data	
Full product code	871829184047300
Order product name	WT120C LED34S/840 PSU L1500
EAN/UPC – product	8718291840473
Order code	84047300
Numerator – quantity per pack	1
Numerator – packs per outer box	1
Material no. (12NC)	910500453337
Net weight (piece)	1.820 kg

Dimensional drawing

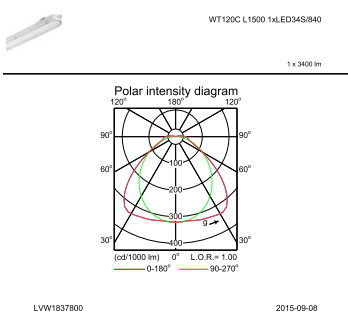


CoreLine Waterproof WT120C

Photometric data



IFGU1_WT120C L1500 1xLED34S840.EPS



IFPC1_WT120C L1500 1xLED34S840.EPS

