



## EcoStyle

### ST440T LED17S/840 PSU MB WH

EcoStyle track mounting - LED Module, system flux 1700 lm - 840 neutral white - Power supply unit - Medium beam - Safety class II - White

Retailers are looking for an affordable LED accent-lighting solution with a reasonable payback compared to conventional technologies. Now, thanks to EcoStyle, they need look no further. With a LED light source and dedicated reflector system, EcoStyle delivers powerful, good-quality accent lighting, enabling retailers to display their merchandise in the best possible light. For food and fashion retailers, EcoStyle is available with special light recipes to further enhance the store ambiance and to show the produce and goods on offer in the very best light: Fresh Food Champagne is the perfect LED solution for displaying fruit, vegetables, cheese, bread and pastries in a warm lighting ambiance; Fresh Food Meat creates the best light setting for meat enhancement in a cool natural ambiance; CrispWhite is the clear choice for fashion retailers to make colors appear rich and intense while keeping whites bright. The track-mounted EcoStyle is also available in a choice of black or white finish. And the combination of efficient LED technology and an innovative heatsink ensures that this is a reliable, lasting solution.

#### Product data

General Information		Optic type	MB [ Medium beam]
Number of light sources	1 [ 1 pc]	Optical cover/lens type	ACC [ Acrylic bowl/cover clear]
Lamp family code	LED17S [ LED Module, system flux 1700 lm]	Luminaire light beam spread	20°
Beam angle of light source	120 °	Connection	-
Light source colour	840 neutral white	Cable	-
Light source replaceable	No	Protection class IEC	Safety class II
Number of gear units	1 unit	Glow-wire test	Temperature 650 °C, duration 5 s
Driver/power unit/transformer	PSU [ Power supply unit]	Flammability mark	F [ For mounting on normally flammable surfaces]
Driver included	Yes	CE mark	CE mark

ENEC mark	ENEC mark
Warranty period	5 years
Constant light output	No
Number of products on MCB	34
RoHS mark	RoHS mark
Product Family Code	ST440T [ EcoStyle track mounting]

## Operating and Electrical

Input voltage	220 to 240 V
Input frequency	50 to 60 Hz
Inrush current	18 A
Inrush time	0.25 ms
Power factor (min.)	0.95

## Controls and Dimming

Dimmable	No
----------	----

## Mechanical and Housing

Housing material	Polycarbonate
Reflector material	Silver
Optic material	Polycarbonate
Optical cover/lens material	Polymethyl methacrylate
Fixation material	Polyamide
Optical cover/lens finish	Clear
Overall length	230 mm
Overall width	112 mm
Overall height	194 mm

## Approval and Application

Ingress protection code	IP20 [ Finger-protected]
Mech. impact protection code	IK02 [ 0.2 J standard]

## Initial Performance (IEC Compliant)

Initial luminous flux	1700 lm
-----------------------	---------

Luminous flux tolerance	+/-10%
Initial LED luminaire efficacy	106 lm/W
Init. Corr. colour temperature	4000 K
Init. colour rendering index	80
Initial chromaticity	(0.38, 0.38) SDCM <5
Initial input power	16 W
Power consumption tolerance	+/-10%

## Over Time Performance (IEC Compliant)

Driver failure rate at 5,000 hours	1 %
Median useful life L70B50	70000 h
Median useful life L80B50	50000 h
Median useful life L90B50	25000 h

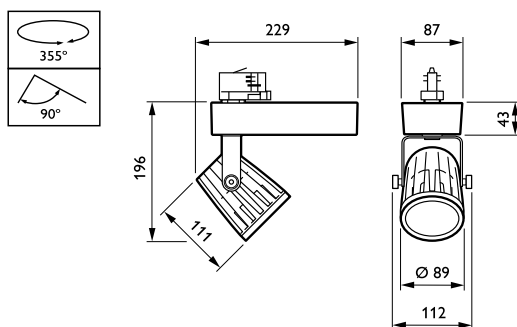
## Application Conditions

Ambient temperature range	0 to +35 °C
Average ambient temperature	25 °C
Suitable for random switching	No

## Product Data

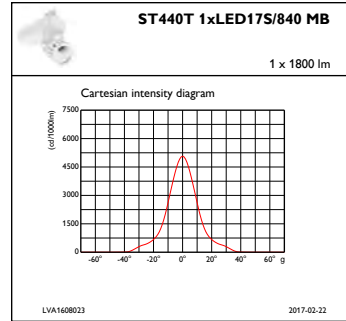
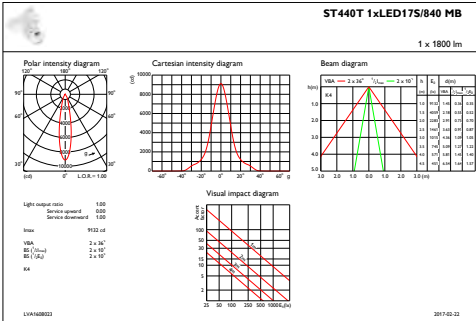
Full product code	871869625915300
Order product name	ST440T LED17S/840 PSU MB WH
EAN/UPC – product	8718696259153
Order code	25915300
Numerator – quantity per pack	1
Numerator – packs per outer box	1
Material no. (12NC)	910500456846
Net weight (piece)	1.460 kg

## Dimensional drawing



EcoStyle ST440S/ST440T

Photometric data



IFAS1\_ST440T1xLED17S840MB

IFCC1\_ST440T1xLED17S840MB

