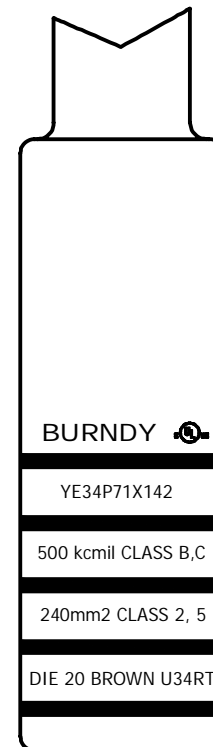
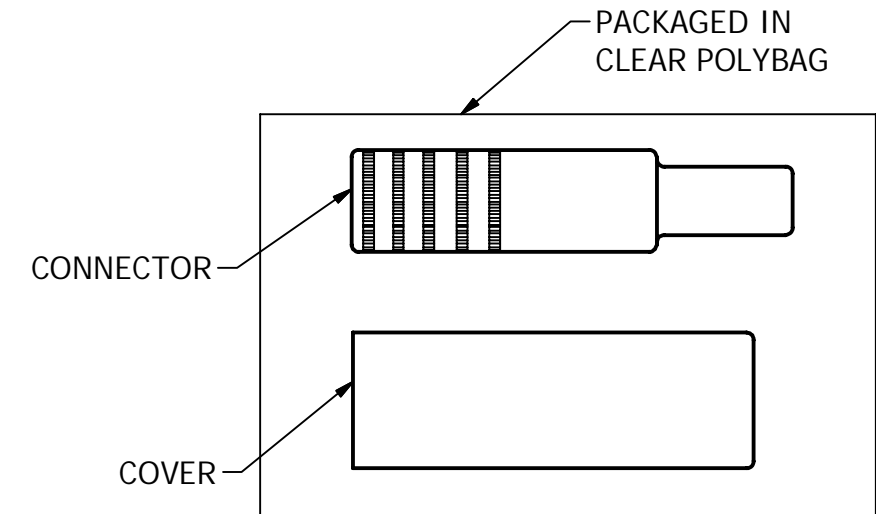
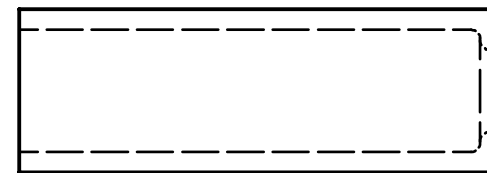
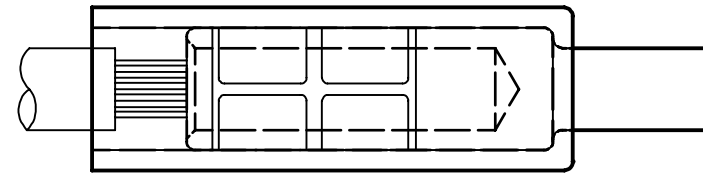
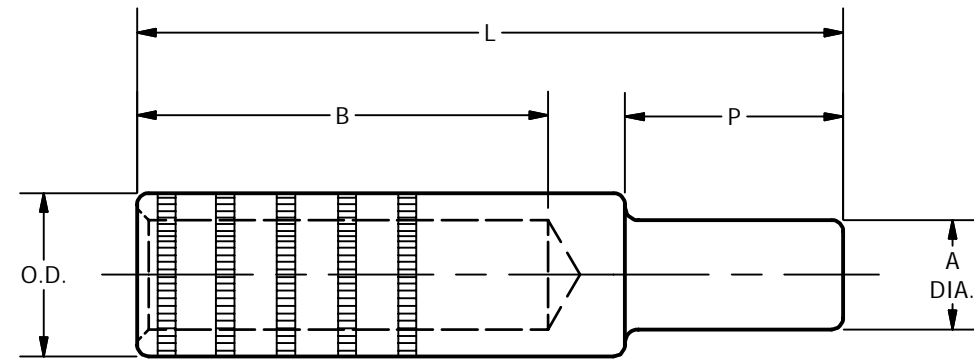


REV	DATE	DESCRIPTION	ECO	BY	C'H'K.
E	06/21/2016	COMBINING SHEETS #1 TO #4 IN AGILE	44157	DD	NJS



TYPICAL LETTERING VIEW  
CONNECTOR MARKING

NOTES:

1. MATERIAL: CONNECTOR = COPPER, COVER = EPDM
2. FINISH: TIN PLATE
3. TO USE "U" DIES IN Y45 HYPRESS™, CATALOG NUMBER PT6515 DIE ADAPTOR IS REQUIRED.
4. TO USE "U" DIES IN Y46 HYPRESS™, CATALOG NUMBER PUADP-1 DIE ADAPTOR IS REQUIRED.
5. THE MD6-6R2 RATCHET TOOL IS REQUIRED ON THESE SIZES. THE STANDARD MD6 OR MD6R RATCHET TOOLS WILL NOT WORK.
6. DIMENSIONS ARE FOR REFERENCE ONLY.
7. cULus LISTED WIRE ADAPTER IS RATED FOR UP TO 35kV, AND 90 C. COVER IS A UL AND CSA LISTED INSULATING COVER, UP TO 600V AND 90C. SEE SHEETS 2-4 FOR LISTING INFORMATION OF CONNECTOR.
8. PIN SIZE IS EQUIVALENT TO CONNECTING CABLE SIZE.
9. PIN SIZE IS EQUIVALENT TO ONE SIZE SMALLER THAN THE CONNECTING CABLE.
10. PIN SIZE IS EQUIVALENT TO TWO SIZES SMALLER THAN THE CONNECTING CABLE.
11. DIMENSIONS IN BRACKETS [ ] ARE IN MILLIMETERS.

SEE SHEETS 2, 3 & 4 FOR TABLES

TO ORDER BURNDY® PRODUCTS CALL		COPPER ADAPTOR PLUGS	
UNITED STATES 1-800-346-4175 (LONDONDERRY, NH)		ITEM NO: N/A	
		CAT. NO: YE-P-FX, & YE-P (SEE TABLE)	
CANADA: 1-800-361-6975 (QUEBEC) 1-800-387-6487 (ALL OTHER PROVINCES)		DRAWN BY: J. MICHAUD 3/15/1993	
		CHECKER: D. FILLION 3/30/1999	
		DSN APRVL: G. DITROIA 4/13/1993	
		MFG APRVL: --	
		QA APRVL: A LLOYD 4/18/1993	
FOR PRODUCT INFO: <a href="http://www.burndy.com">http://www.burndy.com</a>		MKT APRVL: L HERRON 4/8/1999	PROJ. NO: --
		PROJ. #: --	DRAWING NO: SE208340
		DOCUMENT TYPE: SALES	SIZE: B
		REL LEVEL: Released	SHEET 1 OF 4
			REV: E

CATALOG NUMBER	ACCOMMODATES COPPER WIRE SIZES			PIN SIZE EQUIVALENT	DIMENSIONS					COLOR CODE	DIE INDEX	MECHANICAL TOOLS (# CRIMPS)		HYDRAULIC TOOLS (# CRIMPS)					CABLE STRIP LENGTH	
	AWG / Kcmil	METRIC WIRE SIZE	NAVY		A DIA.	B±0.25	L	P	OD±0.1			DIELESS	M D7/M D7-34R M D6/M D6R	DIELESS	Y35 / Y39 Y750	Y45	Y46	Y60BHU		Y644M (ACCOMMODATES EXPANDED WIRE RANGE)
YEV4CP20X75FX	4 AWG CLASS B,C,G-M,DLO	--	40	#4	.20 [5]	1.37 [35]	2.27 [58]	.75 [19]	.38 [10]	GRAY	8	M Y29-11 (1) Y1M RTC (4)	W4CVT (2) W4CRT (2)	Y81KFT (1) Y4PC834 (1)	U4CRT (2)	U4CRT (2)	U4CRT (2)	--	#4 - #6 AWG (1)	1-15/32
	--	25 mm <sup>2</sup> CLASS 2	40	#4	.20 [5]	1.37 [35]	2.27 [58]	.75 [19]	.38 [10]	WHITE	9	M Y29-11 (1) Y1M RTC (4)	W3CVT (2) W3CRT (2)	Y81KFT (1) Y4PC834 (1)	U3CRT (2)	U3CRT (2)	U3CRT (2)	--	#4 - #6 AWG (1)	1-15/32
YEV2CP26X75FX	2 AWG CLASS B,C,G-M,DLO	35 mm <sup>2</sup> CLASS 5	60	#2	.26 [7]	1.65 [42]	2.60 [66]	.75 [19]	.46 [12]	BROWN	10	M Y29-11 (1) Y1M RTC (4)	W2CVT (2) W2CRT (2)	Y81KFT (2) Y4PC834 (2)	U2CRT (2)	U2CRT (2)	U2CRT (2)	--	#2 - #6 AWG (1)	1-3/4
YEV1CP29X75FX	1 AWG CLASS B,C,G-M,DLO	--	75	#1	.29 [8]	1.66 [42]	2.63 [67]	.75 [19]	.51 [13]	GREEN	11	M Y29-11 (1)	W1CVT (2) W1CRT (2)	Y81KFT (2) Y4PC834 (2)	U1CRT (2)	U1CRT (2)	U1CRT (2)	--	#1 - #6 AWG (1)	1-3/4
YEV25P33X75FX	1/0 AWG CLASS B,C,G-M,DLO	50 mm <sup>2</sup> CLASS 5	100	1/0	.33 [8]	1.80 [46]	2.80 [71]	.75 [19]	.56 [14]	PINK	12	M Y29-11 (1)	W25VT (4) W25RT (4)	Y81KFT (2) Y4PC834 (2)	U25RT (2)	U25RT (2)	U25RT (2)	--	1/0 - #6 AWG (1)	1-7/8
YEV26P37X75FX	2/0 AWG CLASS B,C,G-M,DLO	70 mm <sup>2</sup> CLASS 5	125	2/0	.37 [9]	1.82 [46]	2.86 [73]	.75 [19]	.63 [16]	BLACK	13	M Y29-11 (1)	W26VT (4) W26RT (4)	Y81KFT (2) Y4PC834 (2)	U26RT (2)	U26RT (2)	U26RT (2)	--	2/0 - #4 AWG (1)	1-7/8
YEV27P41X82FX	3/0 AWG CLASS B,C,G-M,DLO	95 mm <sup>2</sup> CLASS 5	150	3/0	.41 [10]	1.97 [50]	3.11 [79]	.82 [21]	.70 [18]	ORANGE	14	M Y29-11 (1)	W27VT (4) W27RT (4)	Y81KFT (2) Y4PC834 (2)	U27RT (2)	U27RT (2)	U27RT (2)	--	3/0 - #2 AWG (1)	2-1/16
YEV28P46X92FX	4/0 AWG CLASS B,C,G-M,DLO	120 mm <sup>2</sup> CLASS 2 & 5	200	4/0	.46 [12]	1.99 [51]	3.28 [83]	.92 [23]	.77 [20]	PURPLE	15	M Y29-11 (1)	W28VT (4) W28RT (4)	Y81KFT (2) Y4PC834 (2)	U28RT (2)	U28RT (2)	U28RT (2)	--	4/0 - #1 AWG (1)	2-1/16
YEV28P46X250FX	4/0 AWG CLASS B,C,G-M,DLO	120 mm <sup>2</sup> CLASS 2 & 5	200	4/0	.46 [12]	1.99 [51]	4.86 [123]	2.50 [64]	.77 [20]	PURPLE	15	M Y29-11 (1)	W28VT (4) W28RT (4)	Y81KFT (2) Y4PC834 (2)	U28RT (2)	U28RT (2)	U28RT (2)	--	4/0 - #1 AWG (1)	2-1/16
YE30P50X100FX	250 KCMIL CLASS G,H	--	--	250 Kcmil	.50 [13]	2.37 [60]	3.75 [95]	1.00 [25]	.81 [21]	YELLOW	16	M Y29-11 (1)	W29VT (4) W29RT (4)	Y81KFT (2) Y4PC834 (2)	U29RT (2)	U29RT (2)	U29RT (2)	L29RT (2)	250 Kcmil - 1/0 AWG (1)	2-3/8
YE31P51X102FX	250 KCMIL CLASS I,K,M 262 DLO	--	--	262.6 Kcmil	.51 [13]	2.39 [61]	3.82 [97]	1.02 [26]	.88 [22]	WHITE	17	--	W30VT (4) W30RT (4)	Y81KFT (2) Y4PC834 (2)	U30RT (4)	U30RT (4)	U30RT (4)	L30RT (2)	250 Kcmil - 1/0 AWG (1)	2-1/2
YE32P55X110FX	300 KCMIL CLASS G-M 313 DLO	--	--	300 Kcmil	.55 [14]	2.53 [65]	4.08 [104]	1.10 [28]	.95 [24]	RED	18	--	W31VT (4) W31RT (4)	Y81KFT (2) Y4PC834 (2)	U31RT (4)	U31RT (4)	U31RT (4)	L31RT (2)	300 Kcmil - 2/0 AWG (1)	2-5/8
YE34P59X118FX	350 KCMIL CLASS G-M 373 DLO	--	--	350 Kcmil	.59 [15]	2.68 [68]	4.36 [111]	1.18 [30]	1.06 [27]	BLUE	19	--	W32VT (4) W32RT (4)	Y81KFT (2) Y4PC834 (2)	U32RT (4)	U32RT (4)	U32RT (4)	L32RT (2)	350 Kcmil - 3/0 AWG (1)	2-3/4
YE34P59X250FX	350 KCMIL CLASS G-M 373 DLO	--	--	350 Kcmil	.59 [15]	2.68 [68]	5.68 [144]	2.50 [64]	1.06 [27]	BLUE	19	--	W32VT (4) W32RT (4)	Y81KFT (2) Y4PC834 (2)	U32RT (4)	U32RT (4)	U32RT (4)	L32RT (2)	350 Kcmil - 3/0 AWG (1)	2-3/4
YE36P67X134FX	500 KCMIL CLASS G,H 444 DLO	--	--	400 Kcmil	.67 [17]	3.14 [80]	5.04 [128]	1.34 [34]	1.19 [30]	BROWN	20	--	--	Y81KFT (2) Y4PC834 (2)	U34RT (4)	U34RT (4)	U34RT (4)	L34RT (2)	450 Kcmil - 4/0 AWG (1)	3-1/4
YE38P71X142FX	550 KCMIL CLASS G,H,I 535 DLO	--	--	500 Kcmil	.71 [18]	3.29 [84]	5.30 [135]	1.42 [36]	1.25 [32]	PINK	L99	--	--	Y81KFT (2) Y4PC834 (2)	U38XRT (4)	U38XRT (4)	U38XRT (4)	--	500 Kcmil - 4/0 AWG (1)	3-3/8
YE40P78X156FX	650 KCMIL CLASS G 646 DLO	--	--	600 Kcmil	.78 [20]	3.31 [84]	5.51 [140]	1.56 [40]	1.35 [34]	BLACK	24	--	--	Y81KFT (3) Y4PC834 (3)	U39RT (4)	U39RT (4)	U39RT (4)	L39RT (2)	600 Kcmil - 250 Kcmil (1)	3-7/16
YE44P87X174FX	750 KCMIL CLASS G,H 777 DLO	--	--	750 Kcmil	.87 [22]	3.54 [90]	5.99 [152]	1.74 [44]	1.50 [38]	YELLOW	L115	--	--	Y81KFT (3) Y4PC834 (3)	U44XRT (4)	U44XRT (4)	U44XRT (4)	--	750 Kcmil - 500 Kcmil (1)	3-5/8
YE29P50X100	250 KCMIL CLASS B,C	--	--	250 Kcmil	.50 [13]	1.99 [51]	3.33 [84]	1.00 [25]	.75 [19]	YELLOW	16	M Y29-11 (1)	W29VT (4) W29RT (4)	Y81KFT (2) Y4PC834 (2)	U29RT (2)	U29RT (2)	U29RT (2)	--	250 Kcmil - 1/0 AWG (1)	2-1/2
YE30P55X110	300 KCMIL CLASS B,C	150 mm <sup>2</sup> CLASS 2	--	300 Kcmil	.55 [14]	2.37 [60]	3.85 [98]	1.10 [28]	.81 [21]	WHITE	17	--	W30VT (4) W30RT (4)	Y81KFT (3) Y4PC834 (3)	U30RT (4)	U30RT (4)	U30RT (4)	L30RT (2)	300 Kcmil - 2/0 AWG (1)	2-5/8
YE31P59X118	350 KCMIL CLASS B,C	185 mm <sup>2</sup> CLASS 2	--	350 Kcmil	.59 [15]	2.39 [61]	3.98 [101]	1.18 [30]	.88 [22]	RED	18	--	W31VT (4) W31RT (4)	Y81KFT (3) Y4PC834 (3)	U31RT (4)	U31RT (4)	U31RT (4)	L31RT (2)	350 Kcmil - 3/0 AWG (1)	2-3/4
	--	150 mm <sup>2</sup> CLASS 5	--	350 Kcmil	.59 [15]	2.39 [61]	3.98 [101]	1.18 [30]	.88 [22]	WHITE	17	--	W30VT (4) W30RT (4)	Y81KFT (2) Y4PC834 (2)	U30RT (4)	U30RT (4)	U30RT (4)	L30RT (2)	350 Kcmil - 3/0 AWG (1)	2-3/4
YE32P63X126	400 KCMIL	--	--	400 Kcmil	.63 [16]	2.53 [65]	4.24 [108]	1.26 [32]	.95 [24]	BLUE	19	--	W32VT (4) W32RT (4)	Y81KFT (3) Y4PC834 (3)	U32RT (4)	U32RT (4)	U32RT (4)	L32RT (2)	400 Kcmil - 4/0 AWG (1)	3-1/4
	--	185 mm <sup>2</sup> CLASS 5	--	400 Kcmil	.63 [16]	2.53 [65]	4.24 [108]	1.26 [32]	.95 [24]	RED	18	--	W31VT (4) W31RT (4)	Y81KFT (2) Y4PC834 (2)	U31RT (4)	U31RT (4)	U31RT (4)	L31RT (2)	400 Kcmil - 4/0 AWG (1)	3-1/4
YE34P71X142	500 KCMIL CLASS B,C	240 mm <sup>2</sup> CLASS 2 & 5	--	500 Kcmil	.71 [18]	2.68 [68]	4.60 [117]	1.42 [36]	1.06 [27]	BROWN	20	--	W34VT (4) W34RT (4)	Y81KFT (4) Y4PC834 (4)	U34RT (4)	U34RT (4)	U34RT (4)	L34RT (2)	500 Kcmil - 4/0 AWG (1)	3-3/8
YE34P71X250	500 KCMIL CLASS B,C	240 mm <sup>2</sup> CLASS 2 & 5	--	500 Kcmil	.71 [18]	2.68 [68]	5.68 [144]	2.50 [64]	1.06 [27]	BROWN	20	--	W34VT (4) W34RT (4)	Y81KFT (4) Y4PC834 (4)	U34RT (4)	U34RT (4)	U34RT (4)	L34RT (2)	500 Kcmil - 4/0 AWG (1)	3-3/8
YE36P78X156	600 KCMIL CLASS B,C	300 mm <sup>2</sup> CLASS 2	--	600 Kcmil	.78 [20]	3.14 [80]	5.25 [133]	1.56 [40]	1.19 [30]	GREEN	22	--	--	Y81KFT (4) Y4PC834 (4)	U36RT (4)	U36RT (4)	U36RT (4)	L36RT (2)	600 Kcmil - 250 Kcmil (1)	3-7/16
YE39P87X174	750 KCMIL CLASS B,C	--	--	750 Kcmil	.87 [22]	3.37 [86]	5.73 [145]	1.74 [44]	1.30 [33]	BLACK	24	--	--	Y81KFT (4) Y4PC834 (4)	U39RT (4)	U39RT (4)	U39RT (4)	L39RT (2)	750 Kcmil - 500 Kcmil (1)	3-5/8

NOTES:

- CONNECTORS ON THIS SHEET ARE cULus LISTED WIRE CONNECTOR ADAPTORS.
- SEE SHEET 1 FOR ALL OTHER NOTES.

REV	DATE	DESCRIPTION	ECO	BY	CHK.
E	06/21/2016	COMBINING SHEETS #1 TO #4 IN AGILE	44157	DD	NJS

TO ORDER BURNDY® PRODUCTS CALL

UNITED STATES  
1-800-346-4175 (LONDONDERRY, NH)

CANADA:  
1-800-361-6975 (QUEBEC)  
1-800-387-6487 (ALL OTHER PROVINCES)

FOR PRODUCT INFO: <http://www.burndy.com>

COPPER ADAPTOR PLUGS	
ITEM NO:	N/A
CAT. NO:	YE-P-FX, & YE-P (SEE TABLE)
DRAWN BY:	J. MICHAUD 3/15/1993
CHECKER:	D. FILLION 3/30/1999
DSN APRVL:	G. DITROIA 4/13/1993
MEG APRVL:	--
QA APRVL:	A. LLOYD 4/18/1993
MKT APRVL:	L. HERRON 4/8/1999
PROD FAM:	--
PROJECT #:	--
DOCUMENT TYPE:	SALES
REL LEVEL:	Released
DRAWING NO	SE208340
REV	E
SHEET	2 OF 4



CATALOG NUMBER	ACCOMMODATES COPPER WIRE SIZES			PIN SIZE EQUIVALENT	DIMENSIONS					INSTALLATION DATA											
	FLEX CABLE	METRIC WIRE SIZE	NAVY		A DIA. [MM]	B±025 [MM]	L [MM]	P [MM]	OD±01 [MM]	COLOR CODE	DIE INDEX	MECHANICAL TOOLS (# CRIMPS)		HYDRAULIC TOOLS (# CRIMPS)					CABLE STRIP LENGTH		
												DIELESS	MD7/MD7-34R MD6/MD6R	DIELESS	Y35 / Y39 Y750	Y45	Y46	Y60BHU		Y644M (ACCOMMODATES EXPANDED WIRE RANGE)	
YEV4CP19X75FX	4 AWG CLASS B, C, G-M, DLO	--	40	#5	.19 [5]	1.37 [35]	2.27 [58]	.75 [19]	.38 [10]	GRAY	8	MY29-11 (1) Y1MRTC (4)	W4CVT (2) W4CRT (2)	Y81KFT (1) Y4PC834 (1)	U4CRT (2)	U4CRT (2)	U4CRT (2)	--	#4 - #6 AWG (1)	1-15/32	
	--	25 mm <sup>2</sup> CLASS 2	40	#5	.19 [5]	1.37 [35]	2.27 [58]	.75 [19]	.38 [10]	WHITE	9	MY29-11 (1) Y1MRTC (4)	W3CVT (2) W3CRT (2)	Y81KFT (1) Y4PC834 (1)	U3CRT (2)	U3CRT (2)	U3CRT (2)	--	#4 - #6 AWG (1)	1-15/32	
YEV2CP23X75FX	2 AWG CLASS B, C, G-M, DLO	35 mm <sup>2</sup> CLASS 5	60	#3	.23 [6]	1.65 [42]	2.60 [66]	.75 [19]	.46 [12]	BROWN	10	MY29-11 (1) Y1MRTC (4)	W2CVT (2) W2CRT (2)	Y81KFT (2) Y4PC834 (2)	U2CRT (2)	U2CRT (2)	U2CRT (2)	--	#2 - #6 AWG (1)	1-3/4	
YEV1CP26X75FX	1 AWG CLASS B, C, G-M, DLO	--	75	#2	.26 [7]	1.66 [42]	2.63 [67]	.75 [19]	.51 [13]	GREEN	11	MY29-11 (1)	W1CVT (2) W1CRT (2)	Y81KFT (2) Y4PC834 (2)	U1 CRT (2)	U1CRT (2)	U1CRT (2)	--	#1 - #6 AWG (1)	1-3/4	
YEV25P29X75FX	1/0 AWG CLASS B, C, G-M, DLO	50 mm <sup>2</sup> CLASS 5	100	#1	.29 [8]	1.80 [46]	2.80 [71]	.75 [19]	.56 [14]	PINK	12	MY29-11 (1)	W25VT (4) W25RT (4)	Y81KFT (2) Y4PC834 (2)	U25RT (2)	U25RT (2)	U25RT (2)	--	1/0 - #6 AWG (1)	1-7/8	
YEV26P33X75FX	2/0 AWG CLASS B, C, G-M, DLO	70 mm <sup>2</sup> CLASS 5	125	1/0	.33 [8]	1.82 [46]	2.86 [73]	.75 [19]	.63 [16]	BLACK	13	MY29-11 (1)	W26VT (4) W26RT (4)	Y81KFT (2) Y4PC834 (2)	U26RT (2)	U26RT (2)	U26RT (2)	--	2/0 - #4 AWG (1)	1-7/8	
YEV27P37X75FX	3/0 AWG CLASS B, C, G-M, DLO	95 mm <sup>2</sup> CLASS 5	150	2/0	.37 [9]	1.97 [50]	3.04 [77]	.75 [19]	.70 [18]	ORANGE	14	MY29-11 (1)	W27VT (4) W27RT (4)	Y81KFT (2) Y4PC834 (2)	U27RT (2)	U27RT (2)	U27RT (2)	--	3/0 - #2 AWG (1)	2-1/16	
YEV28P41X75FX	4/0 AWG CLASS B, C, G-M, DLO	120 mm <sup>2</sup> CLASS 2 & 5	200	3/0	.41 [10]	1.99 [51]	3.11 [79]	.75 [19]	.77 [20]	PURPLE	15	MY29-11 (1)	W28VT (4) W28RT (4)	Y81KFT (2) Y4PC834 (2)	U28RT (2)	U28RT (2)	U28RT (2)	--	4/0 - #1 AWG (1)	2-1/16	
YEV28P41X82FX	4/0 AWG CLASS B, C, G-M, DLO	120 mm <sup>2</sup> CLASS 2 & 5	200	3/0	.41 [10]	1.99 [51]	3.18 [81]	.82 [21]	.77 [20]	PURPLE	15	MY29-11 (1)	W28VT (4) W28RT (4)	Y81KFT (2) Y4PC834 (2)	U28RT (2)	U28RT (2)	U28RT (2)	--	4/0 - #1 AWG (1)	2-1/16	
YE30P46X92FX	250 KCMIL CLASS G,H	--	--	4/0	.46 [12]	2.37 [60]	3.67 [93]	.92 [23]	.81 [21]	YELLOW	16	MY29-11 (1)	W29VT (4) W29RT (4)	Y81KFT (2) Y4PC834 (2)	U29RT (2)	U29RT (2)	U29RT (2)	L29RT (2)	250 Kcmil - 1/0 AWG (1)	2-3/8	
YE31P46X92FX	250 KCMIL CLASS I, K, M 262 DLO	--	--	4/0	.46 [12]	2.39 [61]	3.72 [94]	.92 [23]	.88 [22]	WHITE	17	--	W30VT (4) W30RT (4)	Y81KFT (2) Y4PC834 (2)	U30RT (4)	U30RT (4)	U30RT (4)	L30RT (2)	250 Kcmil - 1/0 AWG (1)	2- 1/2	
YE32P51X102FX	300 KCMIL CLASS G-M 313 DLO	--	--	250 Kcmil	.51 [13]	2.53 [65]	4.00 [102]	1.02 [26]	.95 [24]	RED	18	--	W31VT (4) W31RT (4)	Y81KFT (2) Y4PC834 (2)	U31RT (4)	U31RT (4)	U31RT (4)	L31RT (2)	300 Kcmil - 2/0 AWG (1)	2-5/8	
YE34P55X110 FX	350 KCMIL CLASS G-M 373 DLO	--	--	300 Kcmil	.55 [14]	2.68 [68]	4.28 [109]	1.10 [28]	1.06 [27]	BLUE	19	--	W32VT (4) W32RT (4)	Y81KFT (2) Y4PC834 (2)	U32RT (4)	U32RT (4)	U32RT (4)	L32RT (2)	350 Kcmil - 3/0 AWG (1)	2-3/4	
YE36P59X118FX	500 KCMIL CLASS G, H 444 DLO	--	--	350 Kcmil	.59 [15]	3.14 [80]	4.88 [124]	1.18 [30]	1.19 [30]	BROWN	20	--	--	Y81KFT (2) Y4PC834 (2)	U34RT (4)	U34RT (4)	U34RT (4)	L34RT (2)	450 Kcmil - 4/0 AWG (1)	3- 1/4	
YE38P67X134FX	550 KCMIL CLASS G, H, I 535 DLO	--	--	450 Kcmil	.67 [17]	3.29 [84]	5.22 [133]	1.34 [34]	1.25 [32]	PINK	L99	--	--	Y81KFT (2) Y4PC834 (2)	U38XRT (4)	U38XRT (4)	U38XRT (4)	--	500 Kcmil - 4/0 AWG (1)	3-3/8	
YE40P71X142FX	650 KCMIL CLASS G 646 DLO	--	--	500 Kcmil	.71 [18]	3.31 [84]	5.37 [136]	1.42 [36]	1.35 [34]	BLACK	24	--	--	Y81KFT (3) Y4PC834 (3)	U39RT (4)	U39RT (4)	U39RT (4)	L39RT (2)	600 Kcmil - 250 Kcmil (1)	3-7/16	
YE44P78X156FX	750 KCMIL CLASS G, H 777 DLO	--	--	600 Kcmil	.78 [20]	3.54 [90]	5.81 [148]	1.56 [40]	1.50 [38]	YELLOW	L115	--	--	Y81KFT (3) Y4PC834 (3)	U44XRT (4)	U44XRT (4)	U44XRT (4)	--	750 Kcmil - 500 Kcmil (1)	3-5/8	
YE29P46X92	250 KCMIL CLASS B, C	--	--	4/0	.46 [12]	1.99 [51]	3.25 [82]	.92 [23]	.75 [19]	YELLOW	16	MY29-11 (1)	W29VT (4) W29RT (4)	Y81KFT (2) Y4PC834 (2)	U29RT (2)	U29RT (2)	U29RT (2)	--	250 Kcmil - 1/0 AWG (1)	2 -1/2	
YE30P50X100	300 KCMIL CLASS B, C	150 mm <sup>2</sup> CLASS 2	--	250 Kcmil	.50 [13]	2.37 [60]	3.75 [95]	1.00 [25]	.81 [21]	WHITE	17	--	W30VT (4) W30RT (4)	Y81KFT (3) Y4PC834 (3)	U30RT (4)	U30RT (4)	U30RT (4)	L30RT (2)	300 Kcmil - 2/0 AWG (1)	2-5/8	
YE31P55X110	350 KCMIL CLASS B, C	185 mm <sup>2</sup> CLASS 2	--	300 Kcmil	.55 [14]	2.39 [61]	3.90 [99]	1.10 [28]	.88 [22]	RED	18	--	W31VT (4) W31RT (4)	Y81KFT (3) Y4PC834 (3)	U31RT (4)	U31RT (4)	U31RT (4)	L31RT (2)	350 Kcmil - 3/0 AWG (1)	2-3/4	
	--	150 mm <sup>2</sup> CLASS 5	--	300 Kcmil	.55 [14]	2.39 [61]	3.90 [99]	1.10 [28]	.88 [22]	WHITE	17	--	W30 VT (4) W30 RT (4)	Y81KFT (3) Y4PC834 (3)	U30 RT (4)	U30 RT (4)	U30 RT (4)	L30 RT (2)	350 Kcmil - 3/0 AWG (1)	2-3/4	
YE32P59X118	400 Kcmil	--	--	350 Kcmil	.59 [15]	2.53 [65]	4.16 [106]	1.18 [30]	.95 [24]	BLUE	19	--	W32VT (4) W32RT (4)	Y81KFT (3) Y4PC834 (3)	U32RT (4)	U32RT (4)	U32RT (4)	L32RT (2)	400 Kcmil - 4/0 AWG (1)	3- 3/8	
	--	185 mm <sup>2</sup> CLASS 5	--	350 Kcmil	.59 [15]	2.53 [65]	4.16 [106]	1.18 [30]	.95 [24]	RED	18	--	W31VT (4) W31RT (4)	Y81KFT (3) Y4PC834 (3)	U31RT (4)	U31RT (4)	U31RT (4)	L31RT (2)	400 Kcmil - 4/0 AWG (1)	3- 3/8	
YE34P63X126	500 KCMIL CLASS B, C	240 mm <sup>2</sup> CLASS 2 & 5	--	400 Kcmil	.63 [16]	2.68 [68]	4.44 [113]	1.26 [32]	1.06 [27]	BROWN	20	--	W34VT (4) W34RT (4)	Y81KFT (4) Y4PC834 (4)	U34RT (4)	U34RT (4)	U34RT (4)	L34RT (2)	500 Kcmil - 4/0 AWG (1)	3-3/8	
YE36P71X142	600 KCMIL CLASS B, C	300 mm <sup>2</sup> CLASS 2	--	500 Kcmil	.71 [18]	3.14 [80]	5.11 [130]	1.42 [36]	1.19 [30]	GREEN	22	--	--	Y81KFT (4) Y4PC834 (4)	U36RT (4)	U36RT (4)	U36RT (4)	L36RT (2)	600 Kcmil - 250 Kcmil (1)	3-7/16	
YE39P78X156	750 KCMIL CLASS B, C	--	--	600 Kcmil	.78 [20]	3.37 [86]	5.55 [141]	1.56 [40]	1.30 [33]	BLACK	24	--	--	Y81KFT (4) Y4PC834 (4)	U39RT (4)	U39RT (4)	U39RT (4)	L39RT (2)	750 Kcmil - 500 Kcmil (1)	3-5/8	

NOTES:

- CONNECTORS ON THIS SHEET ARE NOT UL LISTED.
- SEE SHEET 1 FOR ALL OTHER NOTES.

TO ORDER BURNDY® PRODUCTS CALL		COPPER ADAPTOR PLUGS	
UNITED STATES 1-800-346-4175 (LONDONDERRY, NH)		ITEM NO: N/A	
CANADA: 1-800-361-6975 (QUEBEC) 1-800-387-6487 (ALL OTHER PROVINCES)		CAT. NO: YE-P-FX, & YE-P (SEE TABLE)	
FOR PRODUCT INFO: <a href="http://www.burndy.com">http://www.burndy.com</a>		DRAWN BY: J. MICHAUD 3/15/1993	
		CHECKER: D. FILLION 3/30/1999	
		DSN APRVL: G. DITROIA 4/13/1993	
		MEG APRVL: --	
		QA APRVL: A LLOYD 4/18/1993	
		MKT APRVL: L HERRON 4/8/1999	
		PROD FAM: --	
		PROJECT #: --	
		DOCUMENT TYPE: SALES	
		REL LEVEL: Released	
		DRAWING NO	
		REV	
		SIZE	
		SE208340	
		SHEET 3 OF 4	

REV	DATE	DESCRIPTION	ECO	BY	CHK.
E	06/21/2016	COMBINING SHEETS #1 TO #4 IN AGILE	44157	DD	NJS

CATALOG NUMBER	ACCOMMODATES COPPER WIRE SIZES			PIN SIZE EQUIVALENT	DIMENSIONS					INSTALLATION DATA										
	FLEX CABLE	METRIC WIRE SIZE	NAVY		A DIA. [MM]	B±025 [MM]	L [MM]	P [MM]	OD±01 [MM]	COLOR CODE	DIE INDEX	MECHANICAL TOOLS (# CRIMPS)		HYDRAULIC TOOLS (# CRIMPS)					CABLE STRIP LENGTH	
												DIELESS	MD7/MD7-34R MD6/MD6R	DIELESS	Y35 / Y39 Y750	Y45	Y46	Y60BHU		Y644M (ACCOMMODATES EXPANDED WIRE RANGE)
YE4CP16X75FX	4 AWG CLASS B, C, G-M, DLO	25 mm² CLASS 2	40	#4	.16 [4]	1.37 [35]	2.27 [58]	.75 [19]	.38 [10]	GRAY	8	MY29-11 (1) Y1MRTC (4)	W4CVT (2) W4CRT (2)	Y81KFT (1) Y4PC834 (1)	U4CRT (2)	U4CRT (2)	U4CRT (2)	-	#4 - #6 AWG (1)	1-15/32
YE2CP20X75FX	2 AWG CLASS B, C, G-M, DLO	35 mm² CLASS 5	60	#4	.20 [5]	1.65 [42]	2.60 [66]	.75 [19]	.46 [12]	BROWN	10	MY29-11 (1) Y1MRTC (4)	W2CVT (2) W2CRT (2)	Y81KFT (2) Y4PC834 (2)	U2CRT (2)	U2CRT (2)	U2CRT (2)	-	#2 - #6 AWG (1)	13/4
YE1CP23X75FX	1 AWG CLASS B, C, G-M, DLO	-	75	#3	.23 [6]	1.66 [42]	2.63 [67]	.75 [19]	.51 [13]	GREEN	11	MY29-11 (1)	W1CVT (2) W1CRT (2)	Y81KFT (2) Y4PC834 (2)	U1CRT (2)	U1CRT (2)	U1CRT (2)	-	#1 - #6 AWG (1)	13/4
YE25P26X75FX	1/0 AWG CLASS B, C, G-M, DLO	50 mm² CLASS 5	100	#2	.26 [7]	1.80 [46]	2.80 [71]	.75 [19]	.56 [14]	PINK	12	MY29-11 (1)	W25VT (4) W25RT (4)	Y81KFT (2) Y4PC834 (2)	U25RT (2)	U25RT (2)	U25RT (2)	-	1/0 - #6 AWG (1)	17/8
YE26P29X75FX	2/0 AWG CLASS B, C, G-M, DLO	70 mm² CLASS 5	125	#1	.29 [8]	1.82 [46]	2.86 [73]	.75 [19]	.63 [16]	BLACK	13	MY29-11 (1)	W26VT (4) W26RT (4)	Y81KFT (2) Y4PC834 (2)	U26RT (2)	U26RT (2)	U26RT (2)	-	2/0 - #4 AWG (1)	17/8
YE27P33X75FX	3/0 AWG CLASS B, C, G-M, DLO	95 mm² CLASS 5	150	1/0	.33 [8]	1.97 [50]	3.04 [77]	.75 [19]	.70 [18]	ORANGE	14	MY29-11 (1)	W27VT (4) W27RT (4)	Y81KFT (2) Y4PC834 (2)	U27RT (2)	U27RT (2)	U27RT (2)	-	3/0 - #2 AWG (1)	2-1/16
YE28P37X75FX	4/0 AWG CLASS B, C, G-M, DLO	120 mm² CLASS 2 & 5	200	2/0	.37 [9]	1.99 [51]	3.11 [79]	.75 [19]	.77 [20]	PURPLE	15	MY29-11 (1)	W28VT (4) W28RT (4)	Y81KFT (2) Y4PC834 (2)	U28RT (2)	U28RT (2)	U28RT (2)	-	4/0 - #1 AWG (1)	2-1/16
YE28P37 X400FX	4/0 AWG CLASS B, C, G-M, DLO	120 mm² CLASS 2 & 5	200	2/0	.37 [9]	1.99 [51]	6.36 [162]	4.00 [102]	.77 [20]	PURPLE	15	MY29-11 (1)	W28VT (4) W28RT (4)	Y81KFT (2) Y4PC834 (2)	U28RT (2)	U28RT (2)	U28RT (2)	-	4/0 - #1 AWG (1)	2-1/16
YE30P41X82FX	250 KCMIL CLASS G, H	-	-	3/0	.41 [10]	2.37 [60]	3.57 [91]	.82 [21]	.81 [21]	YELLOW	16	MY29-11 (1)	W29VT (4) W29RT (4)	Y81KFT (2) Y4PC834 (2)	U29RT (2)	U29RT (2)	U29RT (2)	L29RT (2)	250 Kcmil - 1/0 AWG (1)	2-3/8
YE31P41X82FX	250 KCMIL CLASS I, K, M 262 DLO	-	-	3/0	.41 [10]	2.39 [61]	3.62 [92]	.82 [21]	.88 [22]	WHITE	17	-	W30VT (4) W30RT (4)	Y81KFT (2) Y4PC834 (2)	U30RT (4)	U30RT (4)	U30RT (4)	L30RT (2)	250 Kcmil - 1/0 AWG (1)	2-1/2
YE32P46X92FX	300 KCMIL CLASS G-M 313 DLO	-	-	4/0	.46 [12]	2.53 [65]	3.90 [99]	.92 [23]	.95 [24]	RED	18	-	W31VT (4) W31RT (4)	Y81KFT (2) Y4PC834 (2)	U31RT (4)	U31RT (4)	U31RT (4)	L31RT (2)	300 Kcmil - 2/0 AWG (1)	2-5/8
YE34P51X102FX	350 KCMIL CLASS G-M 373 DLO	-	-	250 Kcmil	.51 [13]	2.68 [68]	4.20 [107]	1.02 [26]	1.06 [27]	BLUE	19	-	W32VT (4) W32RT (4)	Y81KFT (2) Y4PC834 (2)	U32RT (4)	U32RT (4)	U32RT (4)	L32RT (2)	350 Kcmil - 3/0 AWG (1)	2-3/4
YE36P55X110FX	500 KCMIL CLASS G, H 444 DLO	-	-	300 Kcmil	.55 [14]	3.14 [80]	4.80 [122]	1.10 [28]	1.19 [30]	BROWN	20	-	-	Y81KFT (2) Y4PC834 (2)	U34RT (4)	U34RT (4)	U34RT (4)	L34RT (2)	450 Kcmil - 4/0 AWG (1)	3-1/4
YE38P59X118FX	550 KCMIL CLASS G, H, I 535 DLO	-	-	350 Kcmil	.59 [15]	3.29 [84]	5.06 [129]	1.18 [30]	1.25 [32]	PINK	L99	-	-	Y81KFT (2) Y4PC834 (2)	U38XRT (4)	U38XRT (4)	U38XRT (4)	-	500 Kcmil - 4/0 AWG (1)	3-3/8
YE40P67X134FX	650 KCMIL CLASS G 646 DLO	-	-	450 Kcmil	.67 [17]	3.31 [84]	5.29 [134]	1.34 [34]	1.35 [34]	BLACK	24	-	-	Y81KFT (3) Y4PC834 (3)	U39RT (4)	U39RT (4)	U39RT (4)	L39RT (2)	600 Kcmil - 250 Kcmil (1)	3-7/16
YE44P71X142FX	750 KCMIL CLASS G, H 777 DLO	-	-	500 Kcmil	.71 [18]	3.54 [90]	5.67 [144]	1.42 [36]	1.50 [38]	YELLOW	L115	-	-	Y81KFT (3) Y4PC834 (3)	U44XRT (4)	U44XRT (4)	U44XRT (4)	-	750 Kcmil - 500 Kcmil (1)	3-5/8
YE29P41X82	250 KCMIL CLASS B, C	-	-	3/0	.41 [10]	1.99 [51]	3.15 [80]	.82 [21]	.75 [19]	YELLOW	16	MY29-11 (1)	W29VT (4) W29RT (4)	Y81KFT (2) Y4PC834 (2)	U29RT (2)	U29RT (2)	U29RT (2)	-	250 Kcmil - 1/0 AWG (1)	2-1/2
YE30P46X92	300 KCMIL CLASS B, C	150 mm² CLASS 2	-	4/0	.46 [12]	2.37 [60]	3.67 [93]	.92 [23]	.81 [21]	WHITE	17	-	W30VT (4) W30RT (4)	Y81KFT (3) Y4PC834 (3)	U30RT (4)	U30RT (4)	U30RT (4)	L30RT (2)	300 Kcmil - 2/0 AWG (1)	2-5/8
YE31P50X100	350 KCMIL CLASS B, C	185 mm² CLASS 2	-	250 Kcmil	.51 [13]	2.39 [61]	3.80 [96]	1.00 [25]	.88 [22]	RED	18	-	W31VT (4) W31RT (4)	Y81KFT (3) Y4PC834 (3)	U31RT (4)	U31RT (4)	U31RT (4)	L31RT (2)	350 Kcmil - 3/0 AWG (1)	2-3/4
	-	150 mm² CLASS 5	-	250 Kcmil	.51 [13]	2.39 [61]	3.80 [96]	1.00 [25]	.88 [22]	WHITE	17	-	W30VT (4) W30RT (4)	Y81KFT (3) Y4PC834 (3)	U30RT (4)	U30RT (4)	U30RT (4)	L30RT (2)	350 Kcmil - 3/0 AWG (1)	2-3/4
YE32P55X110	400 Kcmil	-	-	300 Kcmil	.55 [14]	2.53 [65]	4.08 [104]	1.10 [28]	.95 [24]	BLUE	19	-	W32VT (4) W32RT (4)	Y81KFT (3) Y4PC834 (3)	U32RT (4)	U32RT (4)	U32RT (4)	L32RT (2)	400 Kcmil - 4/0 AWG (1)	3-1/4
	-	185 mm² CLASS 5	-	300 Kcmil	.55 [14]	2.53 [65]	4.08 [104]	1.10 [28]	.95 [24]	RED	18	-	W31VT (4) W31RT (4)	Y81KFT (3) Y4PC834 (3)	U31RT (4)	U31RT (4)	U31RT (4)	L31RT (2)	400 Kcmil - 4/0 AWG (1)	3-1/4
YE34P59X118	500 KCMIL CLASS B, C	240 mm² CLASS 2 & 5	-	350 Kcmil	.59 [15]	2.68 [68]	4.36 [111]	1.18 [30]	1.07 [27]	BROWN	20	-	W34VT (4) W34RT (4)	Y81KFT (4) Y4PC834 (4)	U34RT (4)	U34RT (4)	U34RT (4)	L34RT (2)	500 Kcmil - 4/0 AWG (1)	3-3/8
YE36P63X126	600 KCMIL CLASS B, C	300 mm² CLASS 2	-	400 Kcmil	.63 [16]	3.14 [80]	4.95 [126]	1.26 [32]	1.19 [30]	GREEN	22	-	-	Y81KFT (4) Y4PC834 (4)	U36RT (4)	U36RT (4)	U36RT (4)	L36RT (2)	600 Kcmil - 250 Kcmil (1)	3-7/16
YE39P71X142	750 KCMIL CLASS B, C	-	-	500 Kcmil	.71 [18]	3.37 [86]	5.41 [137]	1.42 [36]	1.30 [33]	BLACK	24	-	-	Y81KFT (4) Y4PC834 (4)	U39RT (4)	S39RT (4)	P39RT (4)	L39RT (2)	750 Kcmil - 500 Kcmil (1)	3-5/8

NOTES: 1. CONNECTORS ON THIS SHEET ARE NOT UL LISTED. 2. SEE SHEET 1 FOR ALL OTHER NOTES.	TO ORDER BURNDY® PRODUCTS CALL		COPPER ADAPTOR PLUGS																		
	UNITED STATES 1-800-346-4175 (LONDONDERRY, NH)  CANADA: 1-800-361-6975 (QUEBEC) 1-800-387-6487 (ALL OTHER PROVINCES)  FOR PRODUCT INFO: <a href="http://www.burndy.com">http://www.burndy.com</a>		ITEM NO: N/A CAT. NO: YE-P-FX, & YE-P (SEE TABLE) DRAWN BY: J. MICHAUD 3/15/1993 CHECKER: D. FILLION 3/30/1999 DSN APRVL: G. DITROIA 4/13/1993 MEG APRVL: -- QA APRVL: A LLOYD 4/18/1993 MKT APRVL: L HERRON 4/8/1999 PROD FAM: -- PROJECT #: -- DOCUMENT TYPE: SALES REL LEVEL: Released																		
<table border="1"> <tr> <th>REV</th> <th>DATE</th> <th>DESCRIPTION</th> <th>ECO</th> <th>BY</th> <th>CHK.</th> </tr> <tr> <td>E</td> <td>06/21/2016</td> <td>COMBINING SHEETS #1 TO #4 IN AGILE</td> <td>44157</td> <td>DD</td> <td>NJS</td> </tr> </table>		REV	DATE	DESCRIPTION	ECO	BY	CHK.	E	06/21/2016	COMBINING SHEETS #1 TO #4 IN AGILE	44157	DD	NJS	<table border="1"> <tr> <th>DRAWING NO</th> <th>REV</th> </tr> <tr> <td>SE208340</td> <td>E</td> </tr> <tr> <td colspan="2">SHEET 4 OF 4</td> </tr> </table>		DRAWING NO	REV	SE208340	E	SHEET 4 OF 4	
REV	DATE	DESCRIPTION	ECO	BY	CHK.																
E	06/21/2016	COMBINING SHEETS #1 TO #4 IN AGILE	44157	DD	NJS																
DRAWING NO	REV																				
SE208340	E																				
SHEET 4 OF 4																					