

REV	DATE	DESCRIPTION	ECO	BY	C.H.K.
D	03/08/2017 00:00:00 AM	REMOVED CAT. #YAV102TC10 FROM TABLE	46183	SM	MB

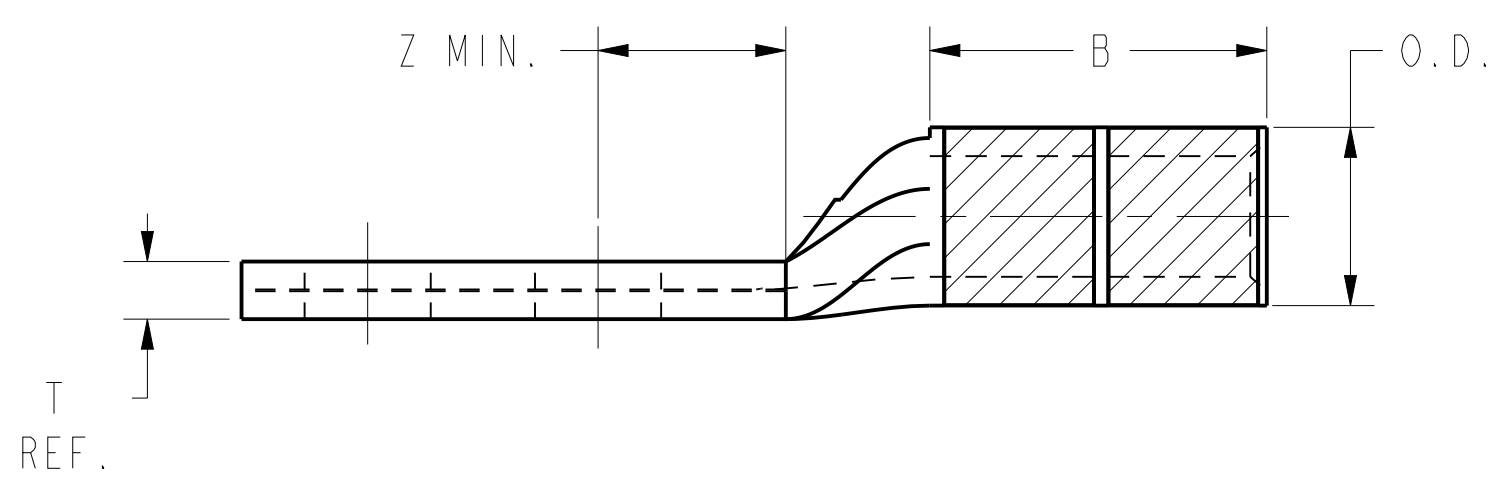
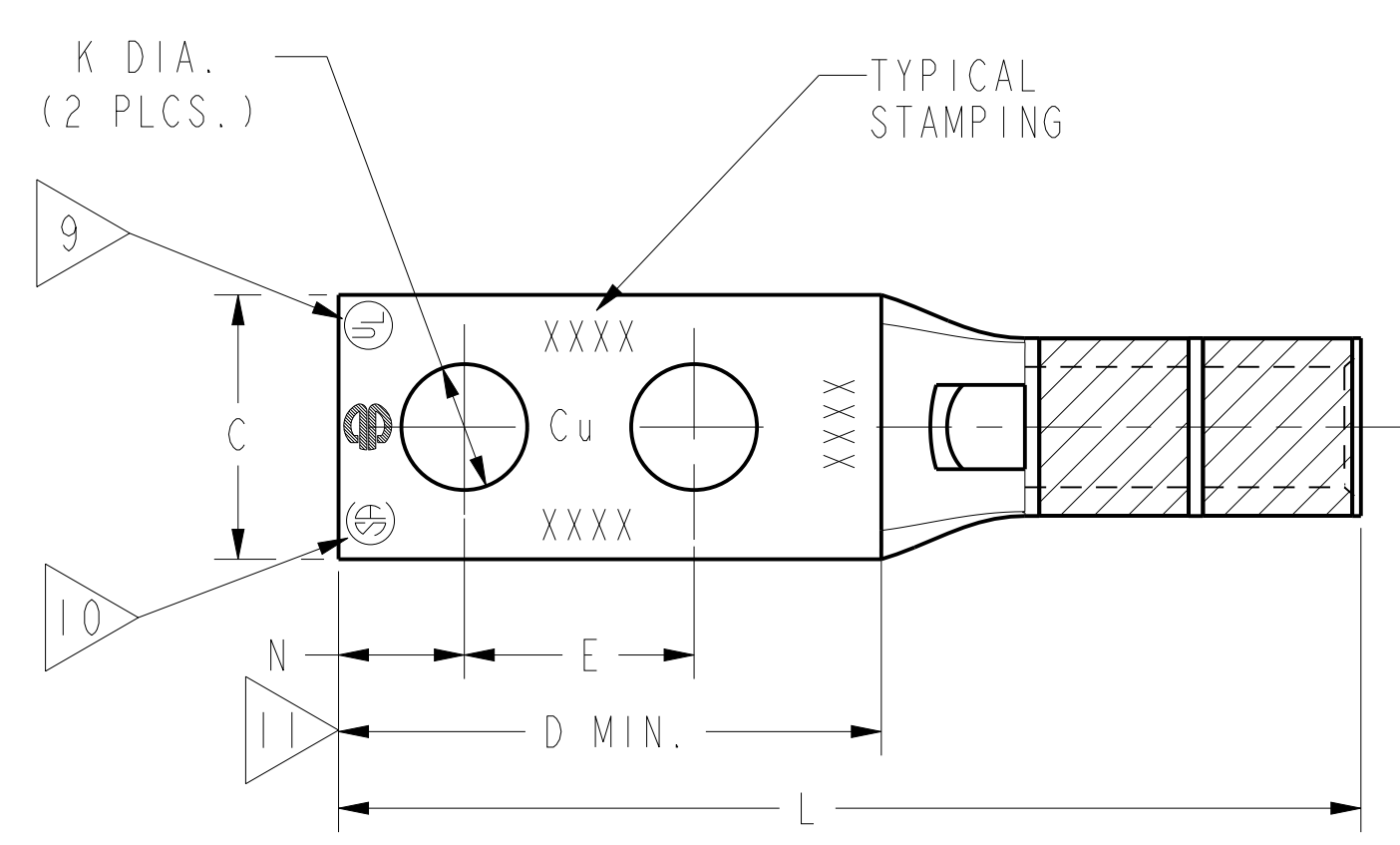
CATALOG NUMBER	STRANDED COPPER CONDUCTOR ACCOMMODATED			BOLT SIZE	METRIC BOLT SIZE	DIMENSIONS								
	CODE (AWG)	NAVY	METRIC SIZE (CLASS 2)			B	C	E	K DIA.	L	N	O.D.	T REF.	Z MIN.
YAV102TC4	#14-#10 STR	3-9	-----	#4	----	.38 [10]	.30 [8]	.50 [13]	.13 [3]	1.40 [36]	.15 [4]	.21 [5]	.08 [2]	.19 [5]
YAV102TC8				#8	----	.36 [9]	.62 [16]	.18 [5]	1.65 [42]	.22 [6]	.06 [2]	.25 [6]		
YAV102TC8E1				#8	----	.36 [9]	1.00 [25]	.18 [5]	2.04 [52]	.22 [6]	.06 [2]	.25 [6]		
YAV102TC10E2				#10	----	.36 [9]	.75 [19]	.21 [5]	1.84 [47]	.25 [6]	.06 [2]	.26 [7]		
YAV102TC14E9				1/4	M6	.41 [10]	.50 [13]	.27 [7]	1.72 [44]	.31 [8]	.05 [1]	.33 [8]		
YAV102TC14				1/4	M6	.41 [10]	.62 [16]	.27 [7]	1.84 [47]	.31 [8]	.05 [1]	.33 [8]		
YAV102TC14E1				1/4	M6	.41 [10]	1.00 [25]	.27 [7]	2.22 [56]	.31 [8]	.05 [1]	.33 [8]		
YAV102TC14E2				1/4	M6	.41 [10]	.75 [19]	.27 [7]	1.97 [50]	.31 [8]	.05 [1]	.33 [8]		
YAV102TC38				3/8	----	.38 [10]	.56 [14]	1.00 [25]	.39 [10]	2.40 [61]	.41 [10]	.21 [5]	.04 [1]	.42 [11]

CONNECTOR SIZE	TOLERANCES						
	B	C	E	K DIA.	L	N	O.D.
-V10	±.04	±.04	±.02	±.02	±.06	±.03	±.01

TOLERANCE BLOCK

INSTALLATION TOOLING (# CRIMPS)																
CATALOG NO.	COLOR CODE	DIE INFORMATION		MECHANICAL					HYDRAULIC					DIELESS (# CRIMPS)	WIRE STRIP LENGTH	
		DIE INDEX	TYPE	Y122CMR MR20 MRE1022B	OUR840	MD6 MD7	MD6--R2 MD7-34R	PAT600 PATMD6	Y34A Y34B Y34BH	Y35, Y39 Y750, PAT750	Y46, PAT46	Y45	Y48B			Y60BHU
YAV102TC4 YAV102TC8 YAV102TC8E1 YAV102TC10E2 YAV102TC14E9 YAV102TC14 YAV102TC14E1 YAV102TC14E2 YAV102TC38	----	----	DIE SET	1 CRIMP	----	----	----	----	----	----	----	----	----	----	RATCHET: Y8MRB-1 MR8G98 MR20 MR89Q MRE1022B (1) CRIMP NON-RATCHET: Y10D Y10-22 (1) CRIMP	7/16"
			NEST													
			INDENTOR													

- NOTES:
- MATERIAL: COPPER TUBING.
 - FINISH: TIN PLATED.
 - CATALOG # PT6515 ADAPTOR IS REQUIRED TO USE "U" DIES IN Y45 SERIES TOOLS.
 - CATALOG # PUADP-1 ADAPTOR IS REQUIRED TO USE "U" DIES IN Y46 SERIES TOOLS.
 - Y35P3 INDENTOR ADAPTOR REQUIRED FOR Y34PR INDENTOR.
 - PERMANENT DIE IN TOOLING.
 - DIMENSIONS IN BRACKETS [] ARE IN MILLIMETERS ROUNDED OFF TO THE NEAREST MILLIMETER, UNLESS OTHERWISE NOTED, AND ARE FOR REFERENCE ONLY.
 - FOR USE BY CUSTOMERS THAT HAVE THIS HYPRESS™ NO NEW Y34A HYPRESS™ TOOLS ARE BEING PROCESSED. Y34A USES A--D TYPE NEST DIES.
 - CONNECTORS ARE UL LISTED, UNDRILLED VERSIONS ARE NOT UL LISTED.
 - CONNECTORS ARE CSA CERTIFIED, UNDRILLED VERSIONS ARE NOT CSA CERTIFIED.
 - FOR UNDRILLED VERSIONS ADD SUFFIX "-U" TO END OF CATALOG NUMBER. FOR UNDRILLED VERSIONS, USE D MIN. = N MAX. + E MIN. + Z MIN.
 - "X", "W-RT", "W-VT", "U", & "L" DIE SETS ARE COLOR CODED. "A", "B", AND "C" DIES ARE NOT COLOR CODED. NESTS AND INDENTOR TYPE ARE NOT COLOR CODED.



REFERENCE: SE209512
SE210463

TO ORDER BURNDY® PRODUCTS CALL UNITED STATES 1-800-346-4175 (LONDONDERRY, NH) CANADA: 1-800-361-6975 (QUEBEC) 1-800-387-6487 (ALL OTHER PROVINCES) FOR PRODUCT INFO: http://www.burndy.com	COPPER HYLUG™		
	ITEM NO:	N/A	
	CAT. NO:	YAV10-2TC- (TABLE)	
	DRAWN BY:	C. RACANO	11/28/77
	CHECKER:	GAR	11/25/77
	DSN APPVL:	LE	11/05/77
	MFG APPVL:	N/A	--
	QA APPVL:	C. ACKERMAN	11/17/94
	MKT APPVL:	T. NELSON	11/10/94
	PROD FAM:	CM&R COMPRESSION	DRAWING NO
PROJECT #:	--	SIZE	SD035209
DOCUMENT TYPE:	Sales		D
REL LEVEL:	Released		SHEET 1 OF 18

REV: PEO200