

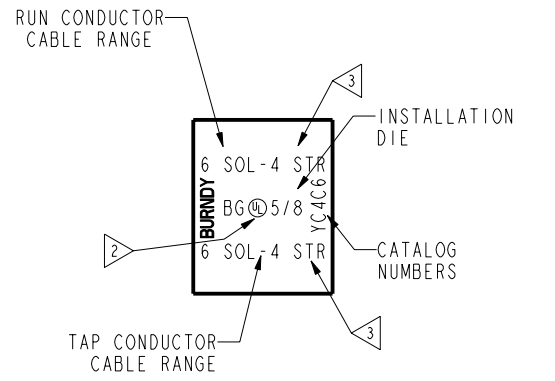
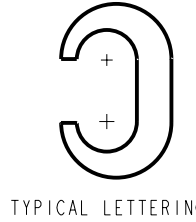
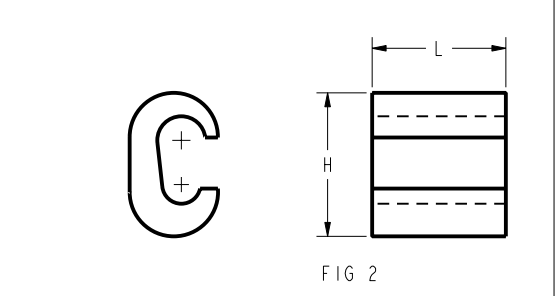
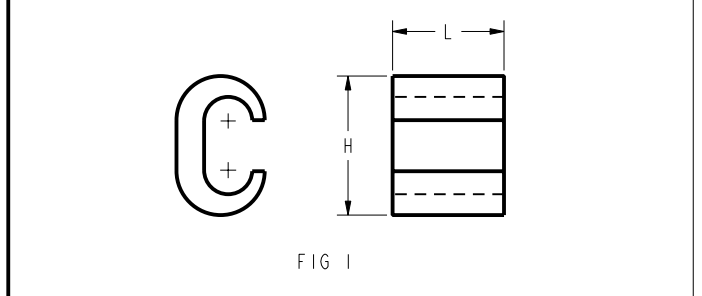
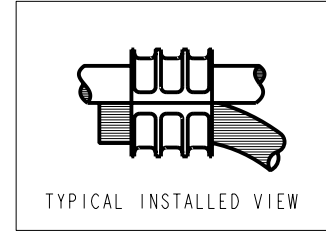
CATALOG NUMBERS	FIG NO.	COMMERCIAL COPPER CABLE RANGE		METRIC COPPER CABLE RANGE		"H"	"L"	INSTALLATION TOOLING						
		RUN	TAP	RUN	TAP			MD6 HYTOOL™		OUR840	Y35 HYPRESS™			
								DIE INDEX NUMBER	DIE CATALOG NUMBER	NUMBER OF CRIMPS	NUMBER OF CRIMPS	DIE INDEX NUMBER	DIE CATALOG NUMBER	NUMBER OF CRIMPS
YC10C10	1	#12 SOL (Ø.081) TO #10 STR (Ø.116)	#12 SOL (Ø.081) TO #10 STR (Ø.116)	[3.32] ² (Ø[2.06]) TO [6.82] ² (Ø[2.95])	[3.32] ² (Ø[2.06]) TO [6.82] ² (Ø[2.95])	.37 [9.4]	.32 [8.1]	238	162	1		238	U238	1
YC8C8	1	#8 SOL (Ø.129) TO #8 STR (Ø.146)	#10 SOL (Ø.102) TO #8 STR (Ø.146)	[8.43] ² (Ø[3.28]) TO [10.80] ² (Ø[3.71])	[5.27] ² (Ø[2.59]) TO [10.80] ² (Ø[3.71])	.46 [12]	.50 [13]	162	162	2		162	U162	2
YC4C8	2	#6 SOL (Ø.162) TO #4 STR (Ø.232)	#8 SOL (Ø.129) TO #8 STR (Ø.146)	[13.3] ² (Ø[4.11]) TO [21.1] ² (Ø[5.89])	[8.4] ² (Ø[3.24]) TO [8.4] ² (Ø[3.71]) TO	.73 [19]	.62 [16]	BG OR 5/8	BG	2		BG	U-BG	1
YC4C6	2		#6 SOL (Ø.162) TO #6 STR (Ø.184)		[13.2] ² (Ø[4.11]) TO [13.2] ² (Ø[4.67]) TO	.76 [19]	.57 [14]							
YC4C4	1		#6 SOL (Ø.162) TO #4 STR (Ø.232)		[13.2] ² (Ø[4.11]) TO [21.1] ² (Ø[5.89]) TO	.81 [21]	.57 [14]							
YC2C4	2	#4 SOL (Ø.204) TO #2 STR (Ø.320)	#8 SOL (Ø.129) TO #4 STR (Ø.232)	[21.1] ² (Ø[5.18]) TO [33.5] ² (Ø[8.13])	[8.4] ² (Ø[3.28]) TO [33.6] ² (Ø[6.55])	.98 [25]	.67 [17]	C	W-C	2		C	U-C	1
YC2C2	1	#2 SOL (Ø.258) TO #2 STR (Ø.320)	#2 SOL (Ø.258) TO #2 STR (Ø.320)	[33.6] ² (Ø[6.55]) TO [33.5] ² (Ø[8.13])	[33.6] ² (Ø[6.55]) TO [33.5] ² (Ø[8.13])	1.05 [28]	.67 [17]							
YC26C2	2	1/0 STR (Ø.373) TO 2/0 STR (Ø.418)	#8 SOL (Ø.129) TO #2 STR (Ø.320)	[53.3] ² (Ø[9.47]) TO [67.7] ² (Ø[10.62])	[8.4] ² (Ø[3.24]) TO [33.5] ² (Ø[8.13])	1.30 [33]	.92 [23]	--	--	--		E OR O	U-E	3
YC26C26	1	2/0 STR (Ø.418)	1/0 STR (Ø.373) TO 2/0 STR (Ø.418)	[53.3] ² (Ø[9.47]) TO [67.7] ² (Ø[10.62])	[53.3] ² (Ø[9.47]) TO [67.7] ² (Ø[10.62])	1.35 [34]	.92 [23]	--	--	--		O	U-O	1
YC28C2	2	3/0 STR (Ø.470) TO 4/0 STR (Ø.528)	#6 SOL (Ø.162) TO #2 STR (Ø.320)	[85.2] ² (Ø[11.94]) TO [107.2] ² (Ø[13.41])	[13.3] ² (Ø[4.11]) TO [33.5] ² (Ø[8.13])	1.65 [42]	1.07 [27]	--	--	--		F	U-F	3
YC28C26	2		1/0 STR (Ø.373) TO 2/0 STR (Ø.418)		[53.3] ² (Ø[9.47]) TO [67.7] ² (Ø[10.62])	1.61 [41]	1.07 [27]							
YC28C28	1		3/0 STR (Ø.470) TO 4/0 STR (Ø.528)		[85.2] ² (Ø[11.94]) TO [107.2] ² (Ø[13.41])	1.56 [40]	1.07 [27]							

REV	DATE	DESCRIPTION	ECO	BY	CHK'D
C	4/24/2009 6:00:00 PM	REDRAWN IN PRO-E	17339	IA	BSK

- NOTES:
- TWO CRIMPS MADE SIMULTANEOUSLY WITH ONE CLOSING OF TOOL.
 - CONNECTOR NOT UL LISTED. LETTERING ON YC10C10 WILL NOT HAVE UL SYMBOL. THE WORD "OR" WILL REPLACE IT.
 - WHEN MAX. AND MIN. CONDUCTOR NUMBERS ARE EQUIVALENT, THE MAX. CONDUCTOR NUMBERS NEED NOT BE SHOWN. BOTH NUMBERS WILL BE SHOWN IF THEY ARE NOT EQUIVALENT.
 - THESE CONNECTORS ARE LINED WITH PENETROX™ S4 SILICON IRON. A NON BERYLLIUM CONTAINING MATERIAL.
 - DIMENSIONS IN BRACKETS [] ARE IN MILLIMETERS.
 - YC4C4 ACCEPTS EXPANDED TAP RANGE OF 6 SOL - 4 STR.
 - YC2C4 ACCEPTS EXPANDED RUN RANGE OF 4 SOL - 2 STR AND TAP RANGE OF 8 SOL - 2 SOL.

SELECTOR CHART	RUN CONDUCTOR													
	[3.3] ² SOL.	[6.8] ² STR.	[8.4] ² SOL.	[8.4] ² STR.	[13.2] ² SOL.	[13.2] ² STR.	[21.1] ² SOL.	[21.1] ² STR.	[33.6] ² SOL.	[33.5] ² STR.	[53.3] ² STR.	[67.7] ² STR.	[85.2] ² [107.2] ² STR.	
	#12 SOL.	#10 STR.	#8 SOL.	#8 STR.	#6 SOL.	#6 STR.	#4 SOL.	#4 STR.	#2 SOL.	#2 STR.	1/0 STR.	2/0 STR.	3/0 STR.	4/0 STR.
	[3.3] ² SOL.	#12 SOL.	YC10C10		YC8C8		YC4C8		YC2C4		YC26C2		YC28C2	
	[5.3] ² SOL.	#10 SOL.												
	[6.8] ² STR.	#10 STR.												
	[8.4] ² SOL.	#8 SOL.												
	[8.4] ² STR.	#8 STR.												
	[13.2] ² SOL.	#6 SOL.												
	[13.2] ² STR.	#6 STR.												
	[21.1] ² SOL.	#4 SOL.												
	[21.1] ² STR.	#4 STR.												
	[33.6] ² SOL.	#2 SOL.												
	[33.5] ² STR.	#2 STR.												
	[53.3] ² STR.	1/0 STR.												
	[67.7] ² STR.	2/0 STR.												
	[85.2] ² STR.	3/0 STR.												
	[107.2] ² STR.	4/0 STR.												

SPECIAL CONDUCTOR COMBINATION	SELECTOR CHART				
	[26.6] SOL.	[33.6] ² SOL.	[33.5] ² STR.	[53.5] ² STR.	[67.7] ² STR.
	#3 SOL.	#2 SOL.	#2 STR.	1/0 [26.6]	2/0 STR.
	[5.3] ² SOL.	#10 SOL.	YC4C8		
	[6.8] ² STR.	#10 STR.			
	[8.4] ² SOL.	#8 SOL.			
	[8.4] ² STR.	#8 STR.			
	[13.2] ² SOL.	#6 SOL.	YC4C6		
	[13.2] ² STR.	#6 STR.			
	[21.1] ² SOL.	#4 SOL.			
	[21.1] ² STR.	#4 STR.	YC2C4		
	[26.6] ² SOL.	#3 SOL.	YC2C2		



TO ORDER BURNDY® PRODUCTS CALL UNITED STATES 1-800-346-4175 (LONDONDERRY, NH) CANADA: 1-800-361-6975 (QUEBEC) 1-800-387-6487 (ALL OTHER PROVINCES) FOR PRODUCT INFO: http://www.burndy.com	CRIMPIT™ (COPPER)	
	ITEM NO: N/A	SCALE: 4:1
	CAT. NO: YC- -C- - (TABLE)	DRAWING NO: SE090670
	DRAWN BY: H CIELESZ 12/05/84	REV: C
	CHECKER: C.A.R. 12/10/84	
DSN APPVL: R.L. 12/11/84		
MFG APPVL: -- --		
QA APPVL: D VARIO 07/24/97		
MKT APPVL: D HAMILTON --		
PROJ #: --	SIZE: D	
DOCUMENT TYPE: Sales	SHEET 1 OF 1	
REL LEVEL: Released		