

7

6

5

4

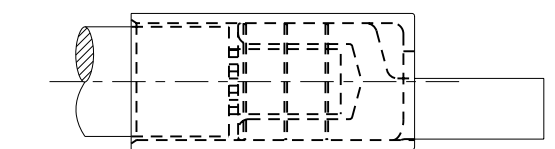
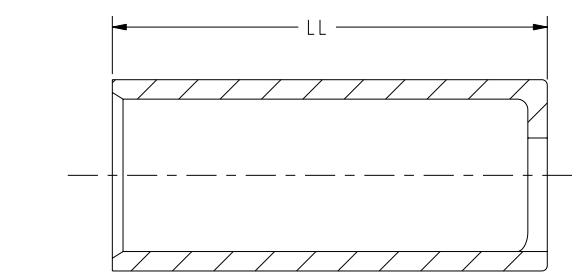
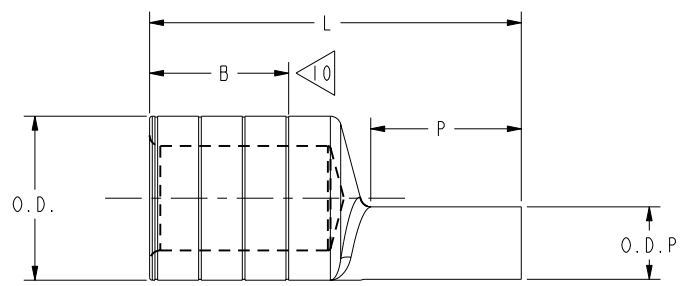
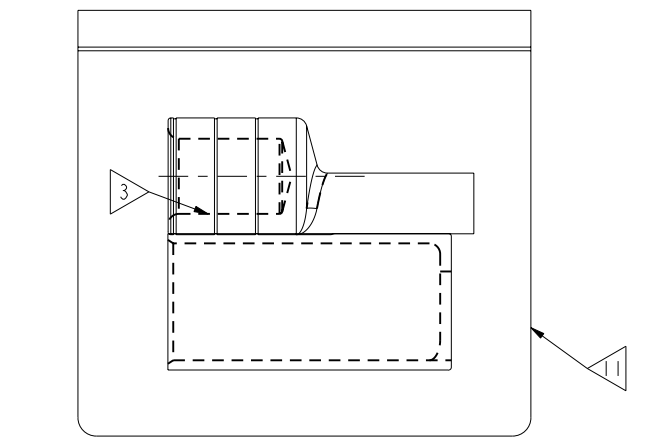
3

2

1

REV	DATE	DESCRIPTION	ECO	BY	C'H'K.
F	01/25/2013 00:00:00 AM	NOTES UPDATED AS PER ECO MARKUP	30020	AD	MA

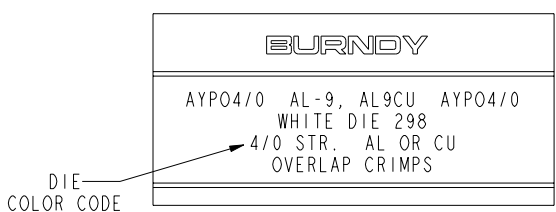
CATALOG NO.	ACCOMMODATES ALUMINUM CABLE: CONCENTRIC, COMPRESSED, COMPACT COPPER CABLE: CONCENTRIC ONLY	DIMENSIONS						INSTALLATION TOOLING (# CRIMPS)						DIELESS (# CRIMPS)	WIRE STRIP LENGTH		
		B	LL	L	O.D	O.D.P	P	DIE INFORMATION		MECHANICAL	HYDRAULIC						
								COLOR CODE	DIE INDEX		MD6	Y34A	Y35, Y39 Y750, PAT35 PAT750			Y46 PAT46	
AYPO2/0	2/0 STR. (.419 DIA.) 19 STR.			2.70 [69]		.33 [8]	1.09 [28]							MECHANICAL: MY29-3 (2) MY29-11 (2)	1-1/8"		
AYPO3/0	3/0 STR. (.470 DIA.) 19 STR.	1.11 [28]	2.23 [57]	2.80 [71]	.85 [22]	.37 [9]	1.22 [31]	WHITE	298	W660 (4)	Y34A (2)	Y46 (2)	Y46 (2)	HYDRAULIC: Y644M (1) PAT644M (1) Y81KFT (2) Y81KFTMBH (2) PAT81KFT-18V (2)	1-1/8"		
AYPO4/0	4/0 STR. (.528 DIA.) 19 STR.																
AYPO250	250 kcmil. (.575 DIA.) 37 STR.	1.07 [27]		2.98 [76]		.47 [12]											
AYPO300	300 kcmil. (.630 DIA.) 37 STR.	1.59 [40]	2.54 [65]	3.08 [78]	1.10 [28]	.53 [13]	1.34 [34]	BROWN	299			U31ART (2)	U31ART (2)	HYDRAULIC: Y644M (1) PAT644M (1) Y81KFT (2) Y81KFTMBH (2) PAT81KFT-18V (2)	1-3/4"		
AYPO350	350 kcmil. (.681 DIA.) 37 STR.																
AYPO400	400 kcmil. (.728 DIA.) 37 STR.		2.81 [71]	3.43 [87]	1.31 [33]	.63 [16]	1.60 [41]	PINK	300			U34ART (4)	U34ART (4)				
AYPO500	500 kcmil. (.813 DIA.) 37 STR.	1.07 [27]				.68 [17]											
AYPO600	600 kcmil. (.893 DIA.) 61 STR.	1.59 [40]		4.02 [102]	1.46 [37]	.73 [19]	1.64 [42]							HYDRAULIC: Y644M (1) PAT644M (1) Y81KFT (3) Y81KFTMBH (3) PAT81KFT-18V (3)	1-3/4"		
AYPO600P70	600 kcmil. (.893 DIA.) 61 STR.			9.38 [238]			7.00 [178]			YELLOW	936			U39ART-2 (3)		U39ART-2 (3)	
AYPO750	700 kcmil. (.964 DIA.) 61 STR.			3.69 [94]													
AYPO750	750 kcmil. (.998 DIA.) 61 STR.			4.16 [106]													
AYPO1000	900 kcmil COMPACT (1.005 DIA.) 61 STR.					.81 [21]	1.76 [45]							Y644 (1) PAT644 (1)			
AYPO1000	1000 kcmil. (1.152 DIA.) 61 STR.		3.89 [99]	4.17 [106]	1.84 [47]			BROWN	302				P44ART (4)	HYDRAULIC: Y644M (1) PAT644M (1)			



VIEW AFTER INSTALLATION

NOTES:

- MATERIAL: CONNECTOR - ALUMINUM
INSULATION COVER - E.P.D.M (SEE SA76839)
- FINISH: TIN PLATED (CONNECTOR ONLY)
- BARREL IS PARTIALLY FILLED WITH PENETROX™ AND SEALED.
- SCRATCH BRUSHING OF ALL CONDUCTORS BEFORE MAKING INSTALLATION IS RECOMMENDED
- INDEX 936 HEX GROOVE.
- CATALOG #PUADP-1 ADAPTOR IS REQUIRED TO USE "U" DIES IN Y46 SERIES TOOLS.
- OVERLAP CRIMPS.
- ONLY THE CONCENTRIC CABLE DIAMETERS ARE SHOWN.
- AYPO600P70 AND AYPO1000 IS NOT UL LISTED® OR CSA CERTIFIED®.
- CONDUCTOR INSERTION LENGTH MINIMUM.
- PACKAGED IN CLEAR POLYBAG.
- DIMENSIONS IN BRACKETS [] ARE IN MILLIMETERS ROUNDED OFF TO THE NEAREST MILLIMETER, UNLESS OTHERWISE NOTED, AND ARE FOR REFERENCE ONLY.
- FOR USE BY CUSTOMERS THAT HAVE THIS HYPRESS™. NO NEW Y34A HYPRESS™ TOOLS ARE BEING PROCESSED.



TYPICAL LETTERING VIEW
CONNECTOR MARKING

- NOT CSA APPROVED FOR USE WITH COPPER CONDUCTOR.
- UL LISTED FOR USE WITH COPPER OR ALUMINUM CONDUCTOR USING U-DIES OR Y81KFT SERIES OF DIELESS TOOLS.
- UL LISTED FOR USE WITH ALUMINUM CONDUCTOR ONLY USING Y644 DIELESS TOOLS.
- NOT UL LISTED OR CSA CERTIFIED WITH THIS TOOLING.
- USE Y644 OR PAT 644 SERIES DIELESS HYPRESS™ ONLY WHEN INSTALLING 900 kcmil COMPACT ALUMINUM. MEETS UL TESTING REQUIREMENTS BUT IS NOT UL LISTED FOR USE WITH 900 COMPACT ALUMINUM.

TO ORDER BURNDY® PRODUCTS CALL
UNITED STATES
1-800-346-4175 (LONDONDERRY, NH)
CANADA:
1-800-361-6975 (QUEBEC)
1-800-387-6487 (ALL OTHER PROVINCES)
FOR PRODUCT INFO: <http://www.burndy.com>

COMPRESSION EQUIPMENT ADAPTOR WIRE CONNECTOR ACCESSORY	
ITEM NO:	EQUIPMENT_CONNECTOR_ASSY
CAT. NO:	AYPO-- (TABLE)
DRAWN BY:	C RACANO 10/07/77
CHECKER:	CAR 10/07/77
DSN APPVL:	ESR 10/10/77
MFG APPVL:	N/A
QA APPVL:	D VARIO 01/06/95
MKT APPVL:	L HERRON 01/02/96
PROJ #:	---
DOCUMENT TYPE:	Sales
REL LEVEL:	Released

SCALE: 1:1
DRAWING NO: SD081094-01
REV: F
SHEET 1 OF 1

REV: PE0200

8

7

6

5

4

3

2

1