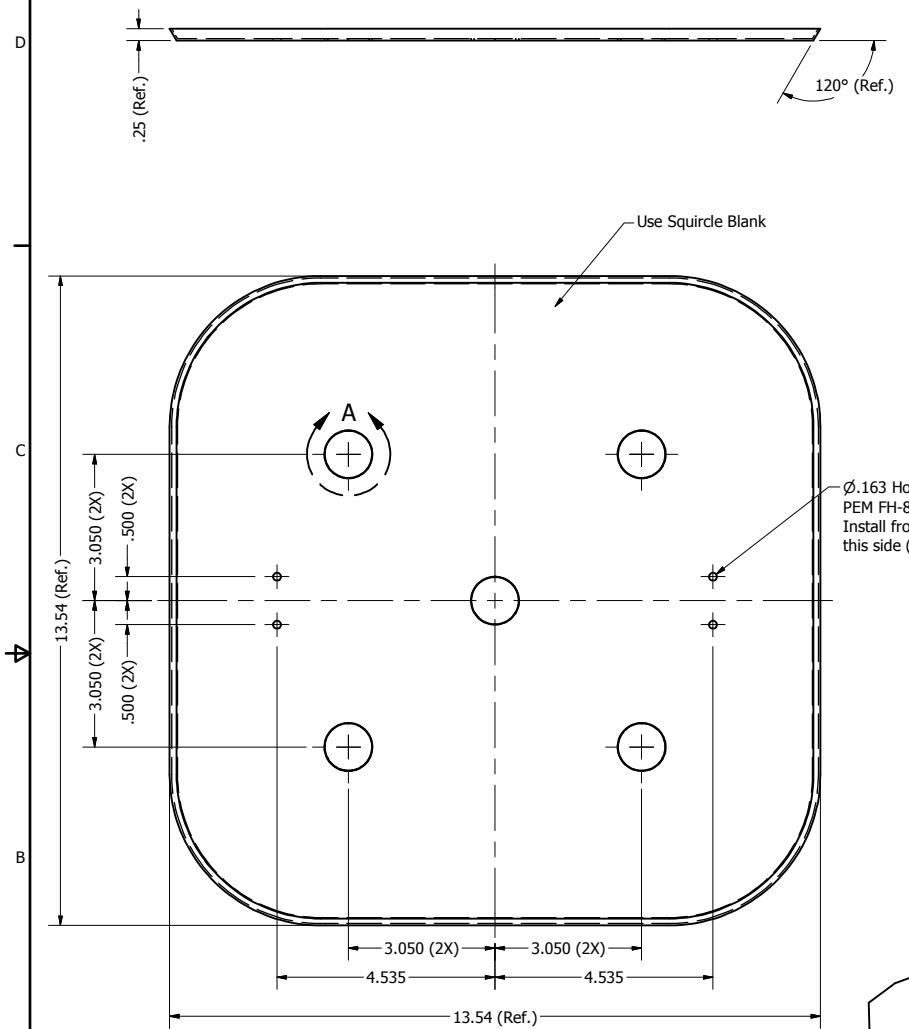
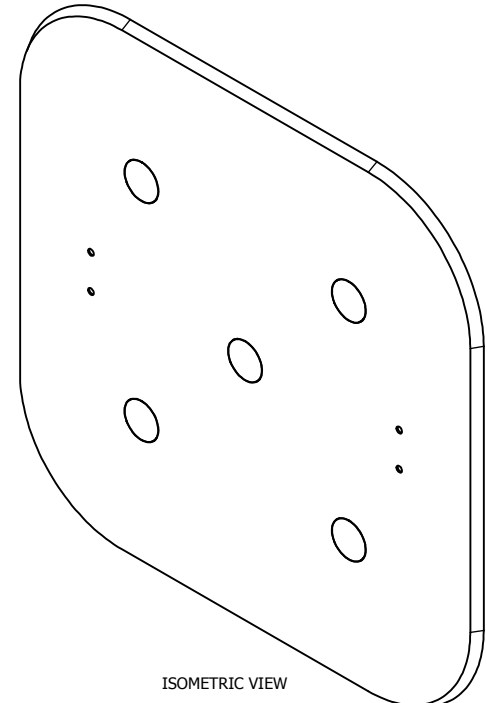


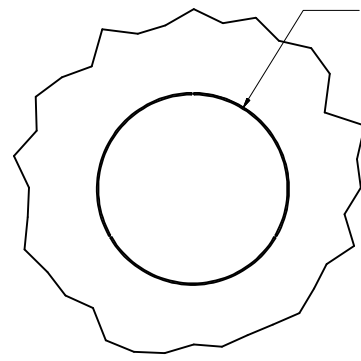
REVISION HISTORY				
ZONE	REV	DESCRIPTION	DATE	APPROVED
All	1	Released	8/22/2017	RLC



Ø.163 Hole for PEM FH-832-4 Install from this side (4X)



ISOMETRIC VIEW

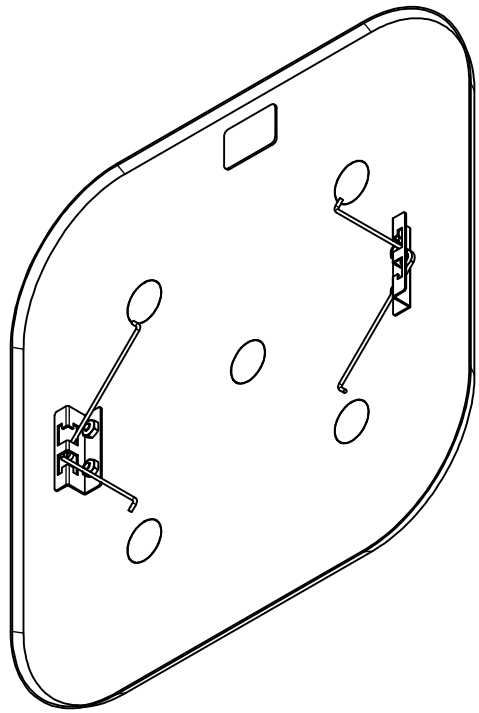


DETAIL A
SCALE 2 : 1

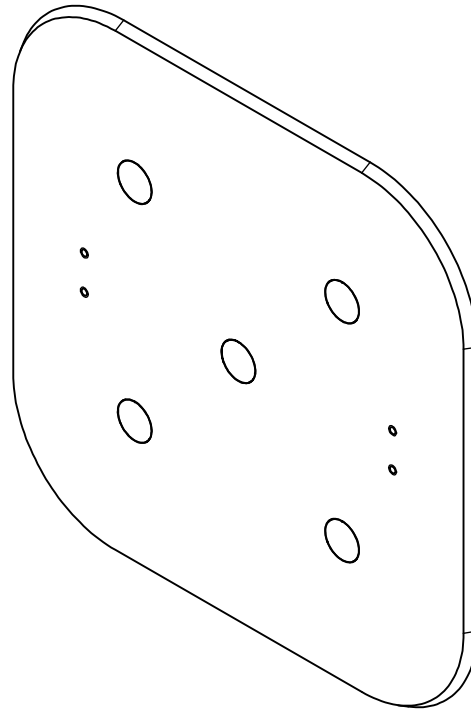
NOTE:
 - Material: 20 GA. Steel
 - Finish: Cardinal C031-WH120 Powder Coat
 - Color: White Texture Semi-Gloss

NOTE: All materials used in the construction of Oberon products must be RoHS compliant and meet RoHS2 Directive 2011/65/EU. Contact Oberon engineering if RoHS compliant materials are not available.

DRAWN	RLC	8/22/2017	Oberon, Inc. - 1315 S. Allen St. - State College, PA 16801	
CHECKED	RLC	8/22/2017	TITLE	
QA			Antenna Mount Trim	
MFG	RLC	8/22/2017	SIZE	DWG NO
APPROVED	RLC	8/22/2017	C	37-104X-ANTMNT-S
TOLERANCE:	.0 = +/- .030		SCALE	REV 1
	.00 = +/- .015			
	.000 = +/- .005			
			SHEET 1 OF 2	



BACK VIEW



FRONT VIEW

DRAWN	RLC	8/22/2017	Oberon, Inc. - 1315 S. Allen St. - State College, PA 16801	
CHECKED	RLC	8/22/2017	TITLE	
QA			Antenna Mount Trim	
MFG	RLC	8/22/2017	SIZE	DWG NO
APPROVED	RLC	8/22/2017	C	37-104X-ANTMNT-S
TOLERANCE:	.0 = +/- .030		SCALE	REV
	.00 = +/- .015			1
	.000 = +/- .005			SHEET 2 OF 2