

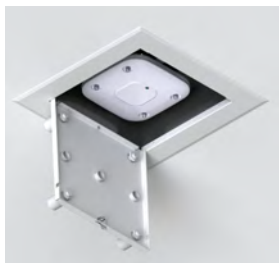


Model 1051-CCOAP3800 Locking Steel Recessed Wall and Hard-Lid Ceiling WiFi Access Point Enclosure, 4.5 in. Deep Back Box / Cisco 2800 & 3800 Series AP Door

Category: Wall and Hard Ceiling - Recess Mount

Locking hard lid ceiling or wall mount enclosure is designed for wireless APs and DAS remote units with detachable antennas. This aesthetic, white powder-coated steel enclosure has an 17.5 in. square bezel which fastens into the wall and simplifies access point moves, adds, and changes. The 1051-00 model has openings in the door to mount up to seven external antennas. Interchangeable retrofit doors allow current owners to upgrade to new AP or antenna solutions from different vendors by swapping doors.

The -CCEA in the model number indicates that this enclosure has been specially sealed to comply with City of Chicago Environmental Air (CCEA) standards, for plenum installation.



Features & Benefits

- Recessed, hard lid ceiling or wall enclosure for securing APs and DAS remotes with detachable antennas
- UL Listed, meet NEC300-22 and 300-23 for plenum installations; approved for AC line power
- Fully-hinged locking door, keyed alike
- Interchangeable doors permit simple migration to new APs and antennas
- Back-box is deep enough to contain most vendors As and connectors
- Enclosure back-box is effective dust barrier to simplify ICRA procedure compliance
- OSHPD approved

Technical Specifications

- Design: 4.5 in. deep AP or DAS Remote Unit enclosure designed for recess installation in hard-lid ceilings (drywall, plaster and lath, stucco, block, core plank, etc.). Internal T-bar accommodates APs from most manufacturers
- This is a steel enclosure so antennas or APs be mounted externally on the door. Mount up to (7) external antennas on the door using the bulkhead connector kit for dipole antennas (Oberon P/N 35-BULKHD-KIT) or Oberon 34-ZDUAL or 34-DMDUAL antennas
- APs with internal or non-detachable antennas from most leading vendor's may be mounted in interchangeable Model 1051 doors (See Oberon's Model 1051 Configuration Guide)
- Performance: UL 50 listed for line voltage powered equipment, and designed to meet NEC300-22 and 300-23 for plenum installations. OSHPD approved OPM-0110-13. De-rate AP operating temperature range by 6°C when mounted in enclosure
- Fully hinged locking door, keyed alike. Doors are interchangeable
- Firestop grommet for insertion into back-box, large enough for 2 Cat6A cables
- 1 in. trade size knockouts in four walls
- Enclosure back box is effective as a dust barrier for ICRA procedure compliance
- -CCEA version constructed to be compliant with City of Chicago Environmental Air (CCEA) plenum requirement
- Construction: 16 ga. back-box, 14 ga. door, textured white powder-coated steel
- Size: Flange is 17.5 x 17.5 in. (445 x 445 mm). Back-box is 12.5 x 12.5 x 4.5 in. (318 x 318 x 114 mm). 4 in. (101 mm) useful depth with universal T-bar bracket in place
- Maximum weight to be installed inside enclosure is 25 lbs.

Standards for Safety

- UL 50 listed, TYPE 1, for indoor use only
- UL Listed and designed to meet National Electric Code Paragraphs 300-22 and 300-23 for installation in the above-ceiling space
- USL - Investigated using requirements contained in Standard UL 50 - Twelfth Edition, and UL 50E - First Edition
- CNL - Investigated using requirements contained in Canadian Standard CSA/C22.2 No. 94.1 and 94.2
- UL 2416, Audio/Video, Information and Communication Technology Equipment Cabinet, Enclosure & Rack Systems
- CSA C22.2 NO. 60950-1-07 + Amd. 1 Amd. 2 Information Technology Equipment -- Safety. Part 1, General Requirements
- OSHPD Approval OPM-110-13

Measurements *(Maximum values):*

- Width: 17.5 in.
- Height: 17.5 in.
- Depth: 4.5 in.
- Item Weight: 16 lbs.
- Shipping Weight: 17 lbs.


Includes


- (1) Unit per carton
- (1) Internal universal AP mounting T-bar bracket
- (4) Hanger wires
- (1) Cable egress firestop Kit (1" trade size conduit connector, and firestop grommet)
- (2) Keys for lock
- (4) White cosmetic screw caps and (4) #10 ceiling/wall attachment screws
- Installation instructions


Available Accessories


- [34-BMANT24](#) - 2.4 GHz Single Band WiFi Antenna: NEMA4 Enclosures
- [34-BMANT5](#) - 5 GHz Single Band WiFi Antenna: NEMA4 Enclosures
- [34-ZDUAL](#) - Dual Band WiFi Antennas: Oberon Enclosures, RPTNC

Documentation Links

 [Spec Sheet](http://oberoninc.com/index.php?option=com_content&view=article&id=3192&Itemid=399) - oberoninc.com/index.php?option=com_content&view=article&id=3192&Itemid=399

 [Installation Instructions](http://oberoninc.com/images/WebDocs/Model1051-00_Installation_Instructions.pdf) - oberoninc.com/images/WebDocs/Model1051-00_Installation_Instructions.pdf

 [Customer Prints](http://oberoninc.com/images/WebDocs/Model1051-00_Customer_Print.pdf) - oberoninc.com/images/WebDocs/Model1051-00_Customer_Print.pdf

 [OSHDP OPM Drawing](http://oberoninc.com/images/WebDocs/Oberon_OPM.pdf) - http://oberoninc.com/images/WebDocs/Oberon_OPM.pdf

 [SECTION 27_21_33 DATA COMMUNICATIONS WIRELESS ACCESS POINTS](http://oberoninc.com/images/WebDocs/SECTION_27_21_33_DATA_COMMUNICATIONS_WIRELESS_ACCESS_POINTS.pdf)

http://oberoninc.com/images/WebDocs/SECTION_27_21_33_DATA_COMMUNICATIONS_WIRELESS_ACCESS_POINTS.pdf

Images and documents may depict similar models in the product series.