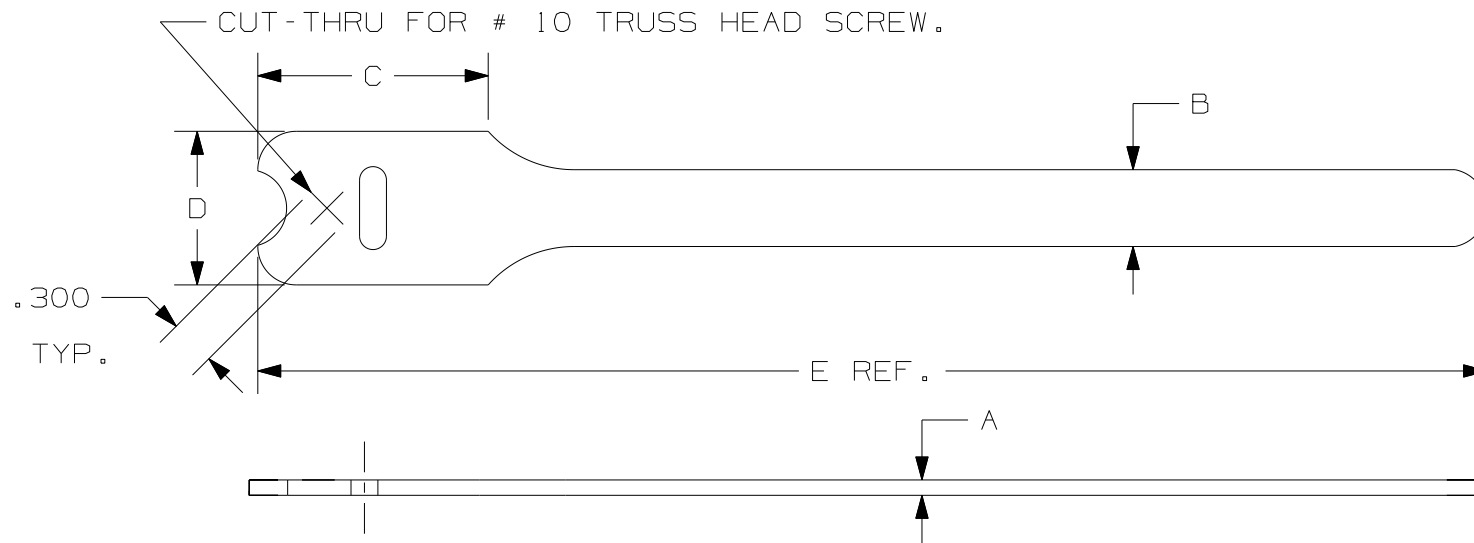


THIS COPY IS PROVIDED ON A RESTRICTED BASIS AND IS NOT TO BE USED IN ANY WAY DETRIMENTAL TO THE INTERESTS OF PANDUIT CORP.



PANDUIT PART NO.	BUNDLE DIA.		A in (mm)	B in (mm)	C in (mm)	D in (mm)	E in (mm)	COLOR	UL LISTED * RATED LOAD lbs. (N)	CROSS SECTION	APPROXIMATE WEIGHT lbs/ 100 PIECES (g)
	MIN. in (mm)	MAX. in (mm)									
HLTP21-X0	.25 (6.4)	1.91 (48.5)	.100 (2.5)	.50 (12.7)	1.50 (38.1)	1.00 (25.4)	8.0 (203)	BLACK	40 (178)	INTERMEDIATE	.43 (196)
HLTP21-X12	.25 (6.4)	1.91 (48.5)	.100 (2.5)	.50 (12.7)	1.50 (38.1)	1.00 (25.4)	8.0 (203)	MAROON	40 (178)	INTERMEDIATE	.43 (196)
HLTP31-X0	.25 (6.4)	3.18 (80.6)	.100 (2.5)	.50 (12.7)	1.50 (38.1)	1.00 (25.4)	12.0 (305)	BLACK	40 (178)	INTERMEDIATE	.62 (282)
HLTP31-X12	.25 (6.4)	3.18 (80.6)	.100 (2.5)	.50 (12.7)	1.50 (38.1)	1.00 (25.4)	12.0 (305)	MAROON	40 (178)	INTERMEDIATE	.62 (282)

NOTES:

- 1) HLTP TIES ARE AVAILABLE IN BLACK AND MAROON ONLY.
- \* 2) MINIMUM 2" (50.8 mm) OVERLAP REQUIRED TO ACHIEVE UL LISTED RATED LOAD. (1 IN<sup>2</sup> OR 645 mm<sup>2</sup>)
- 3) SUITABLE FOR USE IN AIR HANDLING SPACES PER NEC SEC. 300-22 (C) AND (D).

CAD FILENAME/LAYERS		DIMENSIONS IN PARENTHESIS ARE IN METRIC UNITS	
		W10001CZ/05-SS-27182	
PANDUIT		CORP. TINLEY PARK, ILLINOIS	
TAK-TY HOOK & LOOP CABLE TIES		HLTP SERIES	
FLAMMABILITY RATING: UL 94-V2			
UNLESS OTHERWISE SPECIFIED, DIMENSIONAL TOLERANCES ARE: (.X) ± .125 (.XX) ± .125		UNLESS OTHERWISE SPECIFIED, ALL DIMENSIONS ARE GIVEN IN INCHES, THIRD ANGLE PROJECTION.	
DRAWN BY KET		SCALE NONE	
DATE 12/29/98		DRAWING NO. SS-27182	
CHK'D HVP		DWG SIZE A	

REV	DATE	BY	CHK	DESCRIPTION	ECN	R	CUST	SUP
5	2/3/10	JABO	TGS	CORRECTED HLTP2/31-X0 UL LISTED RATED LOAD	SS-27182	5	TGS	