

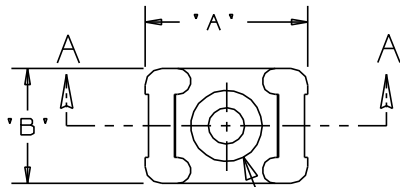
THIS COPY IS PROVIDED ON A RESTRICTED BASIS AND IS NOT TO BE USED IN ANY WAY DETRIMENTAL TO THE INTERESTS OF PANDUIT CORP.

PANDUIT PART NO.*	RECOMMENDED FASTENER	'A'	'B'	'C'	'D'	'E'	'F'	'G' REF'	'H' REF'	'I' REF'	USE WITH THESE CABLE TIE CROSS SECTIONS	WEIGHT (g) lbs/100 pcs.
TM3S8	#8 (M4) SCREW	0.863 (21.9)	0.610 (15.5)	0.373 (9.4)	0.320 (8.1) ±.020 (0.5)	0.088 (2.2) ±.020 (0.5)	0.208 (5.3)	0.105 (2.7)	0.325	0.180	MINIATURE INTERMEDIATE STANDARD LT. HEAVY	0.369 (167.5)
TM3S10	#10 (M5) SCREW							0.115 (2.9)				0.385
TM3S25	1/4" (M6) SCREW	0.879 (22.3)	0.629 (16.0)	0.379 (9.6)			0.210 (5.3)	0.155 (3.9)	0.506	0.262		0.296 (134.5)
TM3S2510	#10 (M5) SCREW	0.873 (22.2)	0.620 (15.7)				0.212 (5.4)	0.120 (3.0)	0.480	0.200		0.321 (145.5)

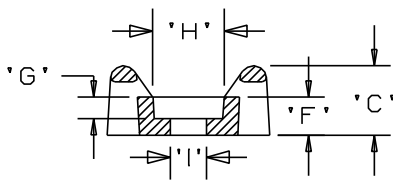
NOTES:

\*1. SEE [www.panduit.com](http://www.panduit.com) FOR CURRENT PART NUMBER SUFFIX DESIGNATION AND FOR PACKAGE SIZE AND PART COLOR. SEE [www.panduit.com](http://www.panduit.com) FOR TEFZEL, METAL DETECTABLE AND PEEK MOUNT DRAWINGS.

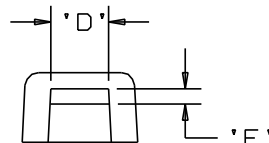
2. HOLE DIMENSIONS SHOULD ACCOMMODATE SPECIFIED RECOMMENDED FASTENER.



SEE NOTE 2



SECTION A-A



DIMENSIONS IN BRACKETS ARE METRIC [mm]

TITLE		TM3S - TIE MOUNT	
CUSTOMER DRAWING			
ITEM REVISION NAME	10B015KD/00	<b>PANDUIT</b>	
DATASET FILE NAME	10B015KD_DC/00 - GB0239EN_REV12		
UNLESS OTHERWISE SPECIFIED, DIMENSIONAL TOLERANCES ARE: IN [mm]		MATERIAL:	
.x ± .1 [2.54]	.xxx ± .005 [0.127]	SEE NOTE 1	
.xx ± .01 [0.25]	ANGLES ± 5°	DRAWING NUMBER:	
THIRD ANGLE PROJECTION		GB0239EN	
DRAWN BY	DATE	CHK	SCALE
AJV	12/17/96		NONE
SHT 1 OF 1		SIZE	
		A	

D101000A/16