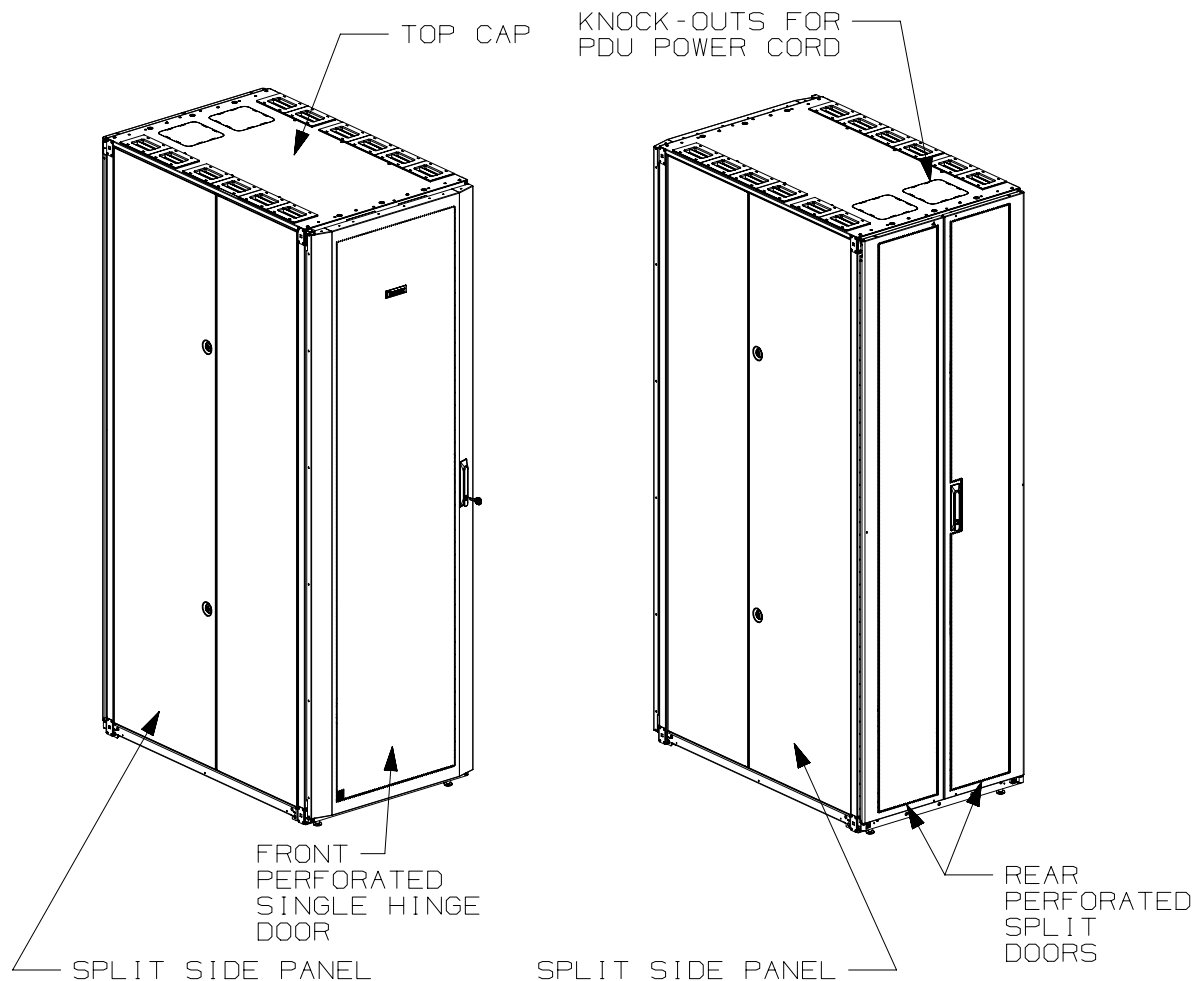


THIS COPY IS PROVIDED ON A RESTRICTED BASIS AND IS NOT TO BE USED IN ANY WAY DETRIMENTAL TO THE INTERESTS OF PANDUIT CORP.



1. VISIT OUR ON-LINE CATALOG AT WWW.PANDUIT.COM FOR A LIST OF CURRENT PARTS APPLICABLE FOR USE WITH THIS PRODUCT.
2. PRIMARY DIMENSIONS ARE IN MILLIMETERS.
3. RAIL ADJUSTMENT MEASUREMENTS ARE TAKEN FROM THE FRONT FACE OF EACH EQUIPMENT RAIL. INDEPENDENT ADJUSTABLE REAR EQUIPMENT MOUNTING RAILS (EIA) ADJUST FROM 141mm [5.5in] TO 437mm [17.2in] AND FROM 526mm [20.7in] TO 933mm [36.7in] WITH PDU BRACKETS AND CABLE MANAGEMENT FINGERS IN PLACE.
4. CAN BE USED WITH ANY 19" EIA STANDARD COMPONENT IN ADDITION TO ALL PANDUIT HORIZONTAL CABLE MANAGEMENT AND PATCH PANEL PRODUCTS.
5. EIA UNIVERSAL STANDARD HOLE PROGRESSION ON EQUIPMENT RAILS 15.88mm [.625in], 15.88mm [.625in], 12.70mm [.50in], 15.88mm [.625in], 15.88mm [.625in], 12.70mm [.50in]...ETC.
6. PARTS SUPPLIED:
 - BASE CABINET
 - FRONT PERFORATED SINGLE HINGE DOOR (SEE CHART ON SHEET 2)
 - REAR PERFORATED SPLIT DOOR (SEE CHART ON SHEET 2)
 - EQUIPMENT RAILS FRONT & REAR (SEE CHART ON SHEET 2)
 - PDU BRACKETS (SEE CHART ON SHEET 2)
 - INSTRUCTION SHEET
7. RACK UNIT SPACING NUMERALS ARE CLEARLY PRINTED ON EQUIPMENT MOUNTING RAILS.
8. FULLY BONDED STRUCTURE WHEN ASSEMBLED PER INSTRUCTIONS.
9. STATIC LOAD RATING. 1360 Kg (3000 LBS)
10. ROLLING LOAD RATING. 1133 Kg (2500 LBS)
11. SINGLE POINT GROUND LOCATIONS AT TOP AND BOTTOM OF CABINET.
12. ALL CABINET RAILS ARE INSTALLED NUMBERS UP.
13. MAXIMUM EQUIPMENT DEPTH, 959mm [37.75in].

01A	9-26-14	PBS	ADP	TCN	FLOOR MOUNT DIMENSIONS UPDATED	V09000BX	
00A	5-24-13	PBS	NAGL	JDWE	RELEASED TO PRODUCTION	12V352BL-DC	
REV	DATE	BY	CHK	APR	DESCRIPTION	ECN	

TITLE		NET-ACCESS S TYPE CABINET W/O CASTERS 700mm WIDE X 1070mm DEEP FAMILY	
CUSTOMER DRAWING			
ITEM REVISION NAME		12V352BL/01.PRT	
DATASET FILE NAME		12V352BL_DC/01A.PRT	
		MATERIAL:	
		N/A	
		DRAWING NUMBER:	
		12V352BL-DC	
DRAWN BY		DATE	CHK
PBS		5-24-13	NAGL
SCALE		NONE	
SHT 1 OF 5		SIZE	
		A	

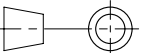
THIS COPY IS PROVIDED ON A RESTRICTED BASIS AND IS NOT TO BE USED IN ANY WAY DETRIMENTAL TO THE INTERESTS OF PANDUIT CORP.

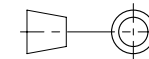
PART NO.	DESCRIPTION	SINGLE HINGE FRONT DOOR	SPLIT REAR DOOR	SPLIT SIDE PANEL	FRONT CAGE NUT E-RAIL	REAR CAGE NUT FINGER MGMT E-RAIL	REAR CAGE NUT VERTICAL PATCH E-RAIL	STANDARD PDU BRACKETS	CASTERS	CABLE MGMT FINGERS	CABINET WEIGHT FULLY UNPACKAGED	CABINET WEIGHT SHIPPING WEIGHT
S7212*9	NET-ACCESS S-TYPE CABINET 700mm X 42RU X 1070mm DEEP	01	01	02	02	02	00	02	00	00	126 Kg/EACH 279 LBS/EACH	147 Kg/EACH 324 LBS/EACH
S7512*9	NET-ACCESS S-TYPE CABINET 700mm X 45RU X 1070mm DEEP	01	01	02	02	02	00	02	00	00	133 Kg/EACH 294 LBS/EACH	154 Kg/EACH 339 LBS/EACH
S7812*9	NET-ACCESS S-TYPE CABINET 700mm X 48RU X 1070mm DEEP	01	01	02	02	02	00	02	00	00	140 Kg/EACH 309 LBS/EACH	160 Kg/EACH 354 LBS/EACH
S7219*9	NET-ACCESS S-TYPE CABINET 700mm X 42RU X 1070mm DEEP	01	01	00	02	02	00	02	00	00	93 Kg/EACH 206 LBS/EACH	114 Kg/EACH 251 LBS/EACH
S7519*9	NET-ACCESS S-TYPE CABINET 700mm X 45RU X 1070mm DEEP	01	01	00	02	02	00	02	00	00	100 Kg/EACH 221 LBS/EACH	121 Kg/EACH 266 LBS/EACH
S7819*9	NET-ACCESS S-TYPE CABINET 700mm X 48RU X 1070mm DEEP	01	01	00	02	02	00	02	00	00	107 Kg/EACH 236 LBS/EACH	127 Kg/EACH 281 LBS/EACH

* DENOTES COLOR

"B" = BLACK

"W" = WHITE

							TITLE NET-ACCESS S TYPE CABINET W/O CASTERS 700mm WIDE X 1070mm DEEP FAMILY						
							CUSTOMER DRAWING						
							ITEM REVISION NAME 12V352BL/01.PRT				PANDUIT		
							DATASET FILE NAME 12V352BL_DC/01A.PRT						
											MATERIAL: N/A		
01A	9-26-14	PBS	ADP	TCN	SEE SHEET 1 OF 5 FOR REVISIONS	V09000BX	 THIRD ANGLE PROJECTION				DRAWING NUMBER: 12V352BL - DC		
00A	5-24-13	PBS	NAGL	JDWE	SEE SHEET 1 OF 5 FOR REVISIONS	12V352BL - DC							
REV	DATE	BY	CHK	APR	DESCRIPTION	ECN	DRAWN BY PBS	DATE 5-24-13	CHK NAGL	SCALE NONE	SHT 2 OF 5	SIZE A	

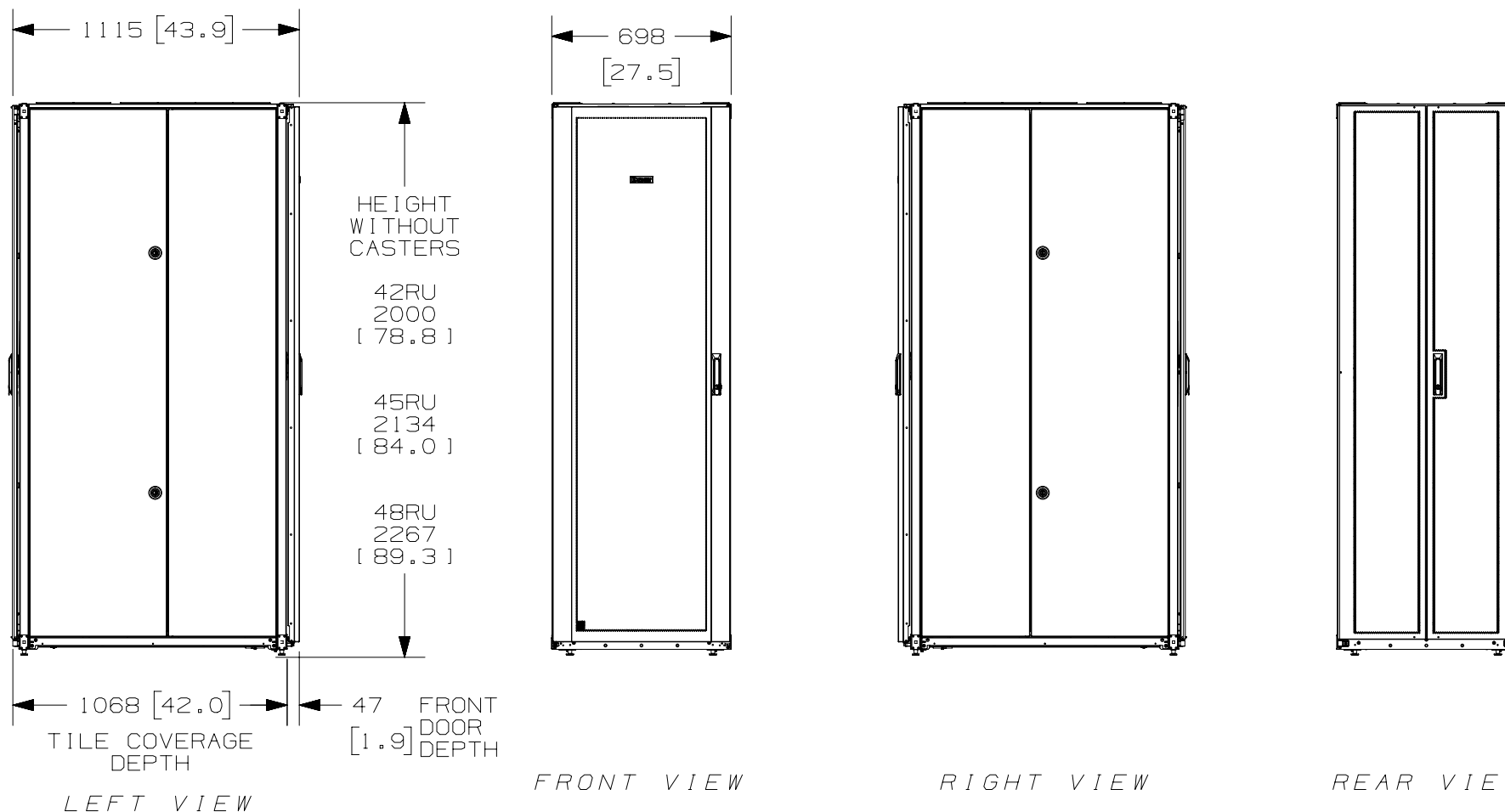


THIRD ANGLE
PROJECTION

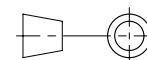
2

1

THIS COPY IS PROVIDED ON A RESTRICTED BASIS AND IS NOT TO BE USED IN ANY WAY DETRIMENTAL TO THE INTERESTS OF PANDUIT CORP.



						TITLE	
						NET-ACCESS S TYPE CABINET W/O CASTERS 700mm WIDE X 1070mm DEEP FAMILY	
						CUSTOMER DRAWING	
						ITEM REVISION NAME	PANDUIT
						12V352BL/01.PRT	
						DATASET FILE NAME	
						12V352BL_DC/01A.PRT	MATERIAL: N/A
01A	9-26-14	PBS	ADP	TCN	SEE SHEET 1 OF 5 FOR REVISIONS	V09000BX	DRAWING NUMBER: 12V352BL - DC
00A	5-24-13	PBS	NAGL	JDWE	SEE SHEET 1 OF 5 FOR REVISIONS	12V352BL - DC	
REV	DATE	BY	CHK	APR	DESCRIPTION	ECN	



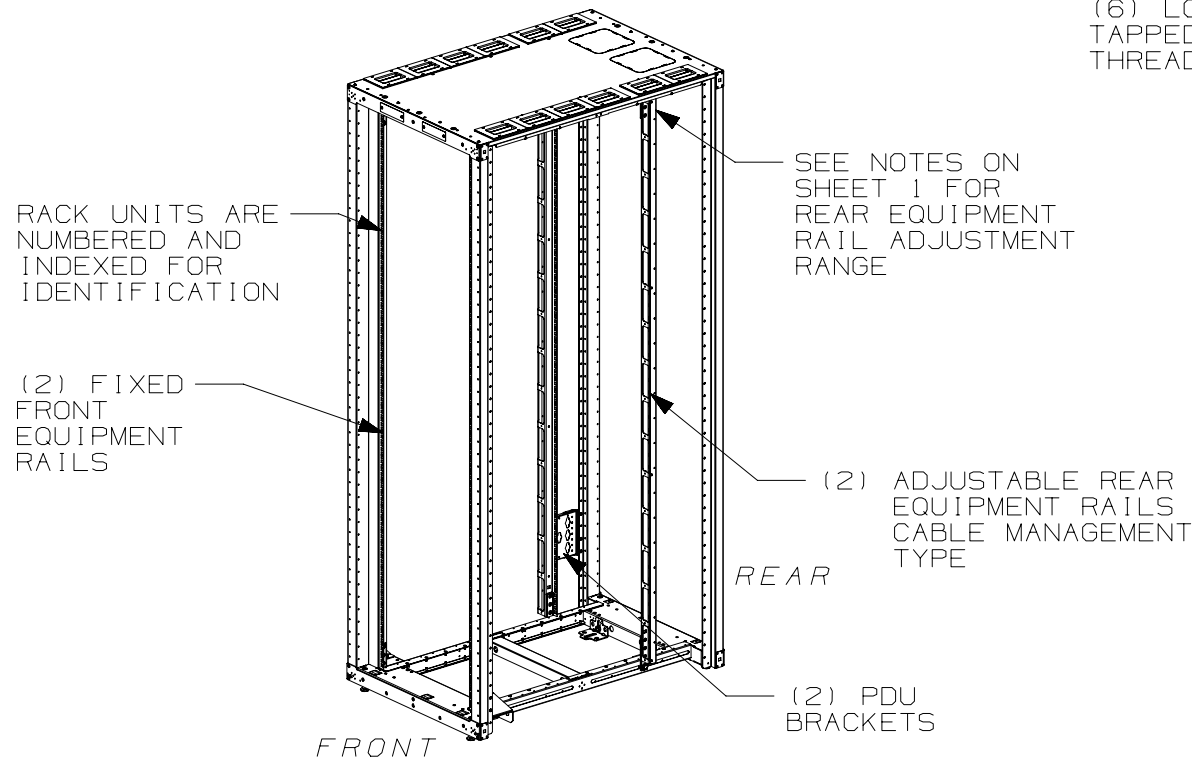
THIRD ANGLE
PROJECTION

DRAWN BY	DATE	CHK	SCALE	DRAWING NUMBER	SIZE
PBS	5-24-13	NAGL	NONE	SHT 3 OF 5	A

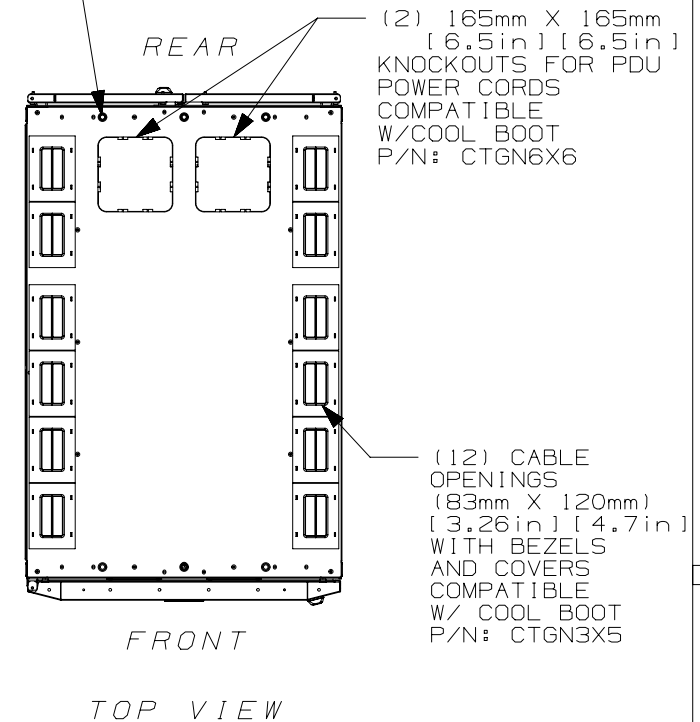
2

1

THIS COPY IS PROVIDED ON A RESTRICTED BASIS AND IS NOT TO BE USED IN ANY WAY DETRIMENTAL TO THE INTERESTS OF PANDUIT CORP.



(6) LOCATIONS TAPPED FOR M10 THREADED ROD



FRONT DOOR, REAR DOOR, AND SIDE PANELS NOT SHOWN

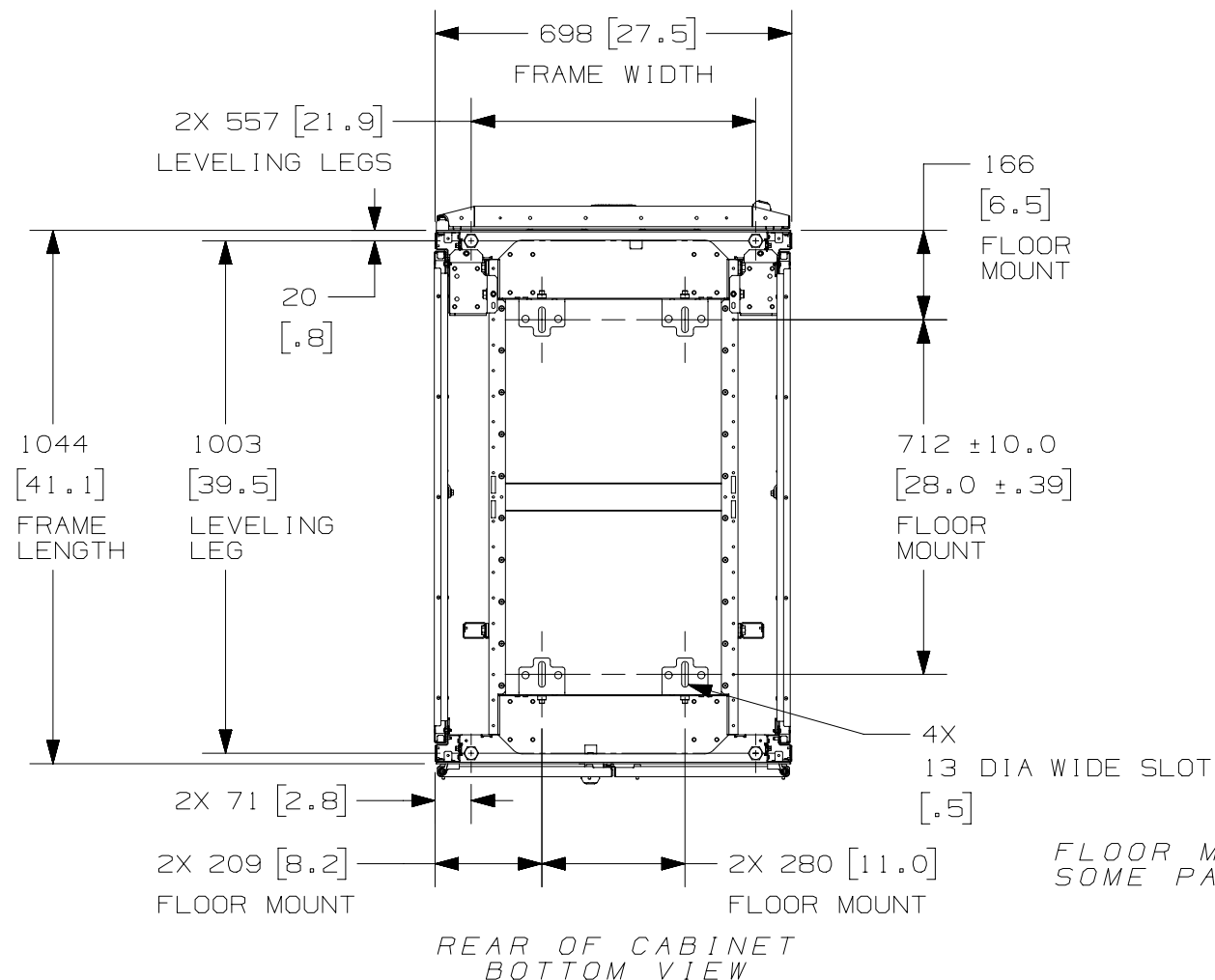
01A	9-26-14	PBS	ADP	TCN	SEE SHEET 1 OF 5 FOR REVISIONS	V09000BX
00A	5-24-13	PBS	NAGL	JDWE	SEE SHEET 1 OF 5 FOR REVISIONS	12V352BL-DC
REV	DATE	BY	CHK	APR	DESCRIPTION	ECN

TITLE				NET-ACCESS S TYPE CABINET W/O CASTERS 700mm WIDE X 1070mm DEEP FAMILY	
CUSTOMER DRAWING					
ITEM REVISION NAME				12V352BL/01.PRT	
DATASET FILE NAME				12V352BL_DC/01A.PRT	
				MATERIAL:	
				N/A	
				DRAWING NUMBER:	
				12V352BL-DC	
DRAWN BY	DATE	CHK	SCALE		
PBS	5-24-13	NAGL	NONE		
				SHT 4 OF 5	A

2

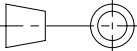
1

THIS COPY IS PROVIDED ON A RESTRICTED BASIS AND IS NOT TO BE USED IN ANY WAY DETRIMENTAL TO THE INTERESTS OF PANDUIT CORP.



FLOOR MOUNTING HOLE LOCATIONS -
SOME PARTS REMOVED FOR CLARITY

01A	9-26-14	PBS	ADP	TCN	SEE SHEET 1 OF 5 FOR REVISIONS	V09000BX
00A	5-24-13	PBS	NAGL	JDWE	SEE SHEET 1 OF 5 FOR REVISIONS	12V352BL-DC
REV	DATE	BY	CHK	APR	DESCRIPTION	ECN

TITLE				
NET-ACCESS S TYPE CABINET W/O CASTERS 700mm WIDE X 1070mm DEEP FAMILY				
CUSTOMER DRAWING				
ITEM REVISION NAME			PANDUIT	
12V352BL/01.PRT				
DATASET FILE NAME				
12V352BL_DC/01A.PRT			MATERIAL:	
			N/A	
			DRAWING NUMBER:	
			12V352BL - DC	
DRAWN BY	DATE	CHK	SCALE	SIZE
PBS	5-24-13	NAGL	NONE	A
			SHT 5 OF 5	

2

1