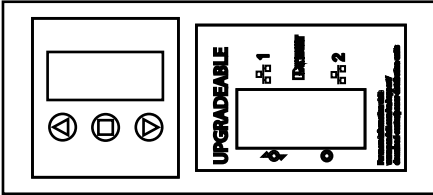
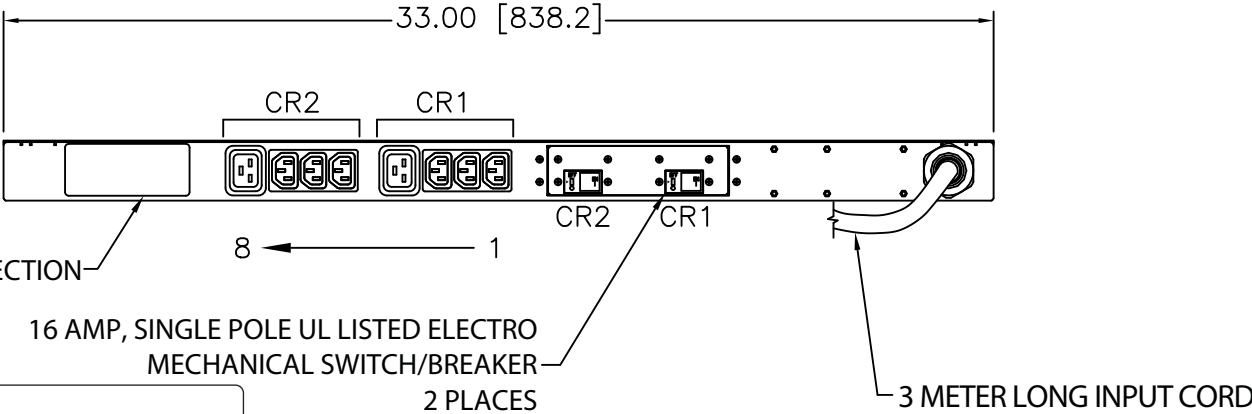
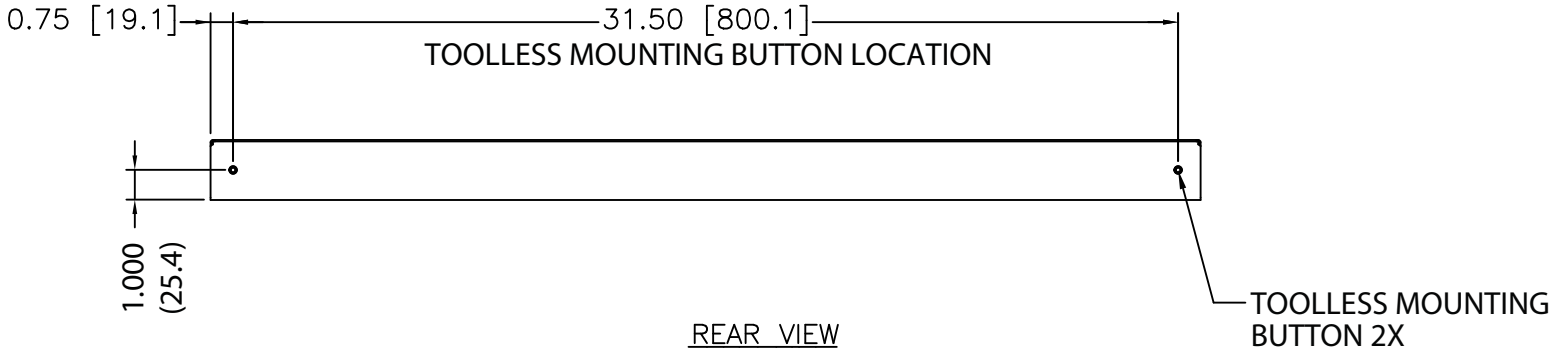


THIS COPY IS PROVIDED ON A RESTRICTED BASIS AND IS NOT TO BE USED IN ANY WAY DETRIMENTAL TO THE INTERESTS OF PANDUIT CORP.

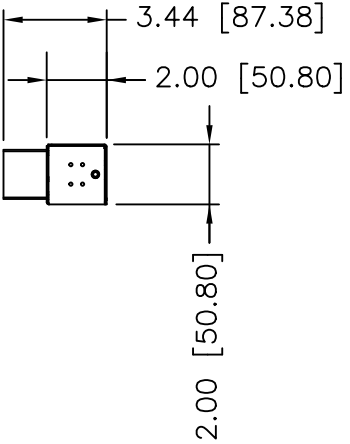


DETAIL A
(SCALE 4X)

PANDUIT P/N	WEIGHT
QD0D2B2BN0861	17 lb (7.7 kg)



- NOTES:
- IDENTIFICATION: 33" VERTICAL, MIXED (6) C-13 & (2) C-19 NETWORKED SECONDARY UNIT
230V / 32A / SINGLE-PHASE POU
PART NO. QD0D2B2BN0861
COLOR BLACK
 - ACCESSORY COMPONENTS:
(4) M6 x 20mm MOUNTING SCREWS
(4) #12-24 x 1/2" MOUNTING SCREWS
(2) #10-32 LOCKING COLLAR SCREWS
(2) L-BRACKETS
 - DIMENSIONS IN PARENTHESES ARE METRIC (mm).
 - POWER (A,V,PF,KWH) MONITORING CAN ALSO BE ACCESSED REMOTELY VIA ETHERNET CONNECTION.
 - UPLINK CAN BE USED TO DAISY CHAIN TO THE PRIMARY UNIT TO HELP MINIMIZE SWITCH PORT USAGE.
 - UNIT COMPLIES WITH IEC 60950-1, EN55022, EN55024 AND IS CE & C-TICK MARKED.
 - RoHS COMPLIANT.
 - VISIT OUR ON-LINE CATALOG AT WWW.PANDUIT.COM FOR A CURRENT LIST OF PRODUCTS APPLICABLE FOR USE WITH THIS PART.
 - MAXIMUM AVAILABLE INPUT POWER = 7.4 KW
 - INSTALLATION SHALL COMPLY WITH ALL APPLICABLE NATIONAL, STATE, AND LOCAL CODES.



PLUG
32 AMP, 250V, SINGLE-PHASE
2P/3W
IEC 60309, SPLASHPROOF

SIX (6)
RECEPTACLES
10 AMP, 250V
STRAIGHT BLADE
IEC 60320/C13

TWO (2)
RECEPTACLES
16 AMP, 250V
STRAIGHT BLADE
IEC 60320/C19

REV	DATE	BY	CHK	DESCRIPTION	ECN	R	CUST	SUP	OTH
03A	2-12-15	MRWA	CRW	I. UPDATED NOTE 4 H. REMOVED "ENVIRONMENTAL MONITORED" FROM NOTE 1 & TITLE F. REMOVED CONNECTION CORD FROM ACCESSORIES	09V098HU				
02A	12-30-14	MRWA	CTN	E. REVISED MECHANICAL LAYOUT OF UNIT	09V098HU				
01B	9-5-12	MRWA	KRKE	D. RENAMED CONNECTION FROM ETHERNET	09V098HU				
01A	9-5-12	PIP	MRWA	C. UPDATED DETAIL A.	09V098HU				
00B	6-22-12	MRWA	KRKE	A. BREAKER WAS 2 POLE B. UPDATED M6 SCREW LENGTH	09V098HU				
00A	1-9-12	MRWA	KRKE	RELEASED TO PRODUCTION	09V098HU				

MODEL FILENAME		09V098HU/03.PRT	
CAD FILENAME/LAYERS		09V098HU_DC/03A.PRT	
PANDUIT CORP TINLEY PARK, ILLINOIS			
33" VERTICAL, MIXED (6) C-13 & (2) C-19 NETWORKED POWER OUTLET UNIT CUSTOMER DRAWING			
UNLESS OTHERWISE SPECIFIED, DIMENSIONAL TOLERANCES ARE:		UNLESS OTHERWISE SPECIFIED,	
INCHES	[METRIC - MILLIMETER]	ANGLE	
X.X +/- 0.03	X. +/- 0.8	ALL DIMENSIONS ARE GIVEN IN	
X.XX +/- 0.015	X.X +/- 0.4	INCHES, THIRD ANGLE PROJECTION	
X.XXX +/- 0.005	X.XX +/- 0.13		
DRAWN BY		SCALE	
MRWA		NONE	
DATE		DRAWING NO.	
1-9-12		09V098HU	
CHK'D		DWG	
KRKE		B	
		SIZE	